



solo

Fabricating for a better tomorrow
He waka eke noa

solo PRESSURE RANGE

0800 765 675

Auckland 33 Honan Place, Avondale
Phone 09 828 9594

Christchurch 72 Hayton Road, Wigram
Phone 03 353 9291

solo.sales@solo.co.nz

solo.co.nz

FABRICATING FOR A BETTER TOMORROW

Solo's Vision is "*Fabricating for a Better Tomorrow*".
We sustainably manufacture and import infrastructure solutions in PE and PVC for the people of New Zealand, focusing on values that help to conserve and protect our planet whilst always watching over our whānau. Now *that's* standing for better...

solo.co.nz



PRESSURE RANGE

MOULDED

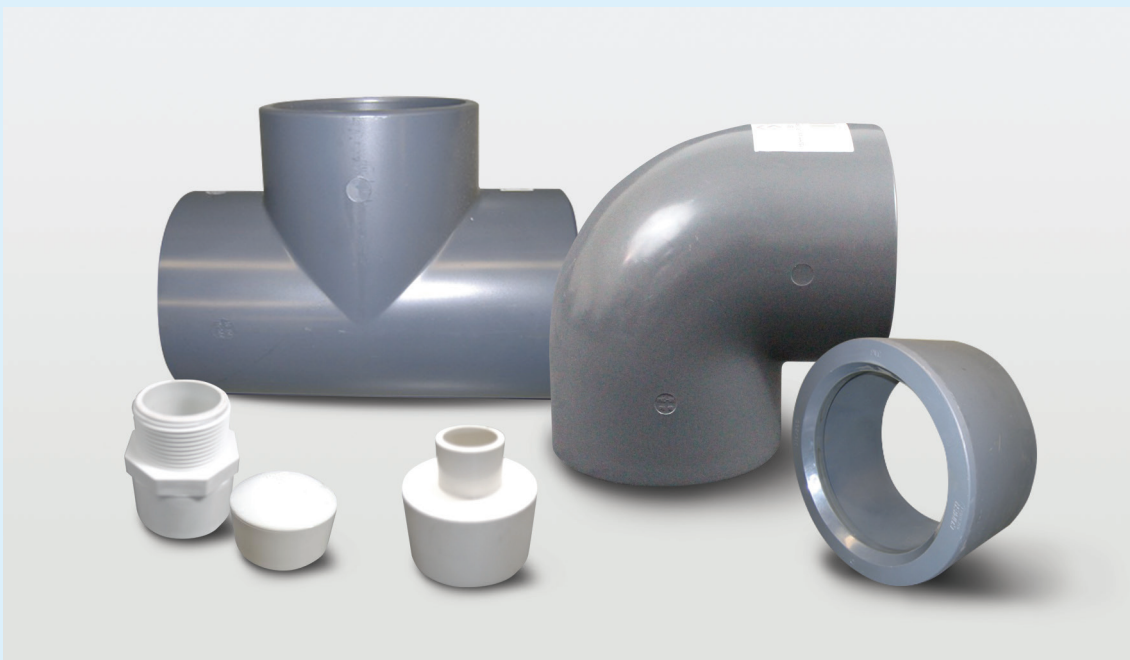
4-8 Elbows | Tees | Couplers
Sockets | Caps | Tees | Pipes

FABRICATED

11 Adaptors

FORMED

9-11 Bends | Couplers | Sockets



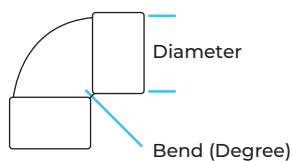
Code breakdown

Small Elbow Order Code

8 0 1 . 1 5 . 4 5 I

Diameter (mm)

Bend (Degree)



Depending on the type of product, the following illustrations explain what the code numbers mean.



Pressure Small Elbow uPVC SCJ

801

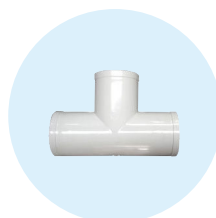
Code	Size (mm)	Type	Bend
801.15.45I	15	PN15	45°
801.15.90I	15	PN15	90°
801.20.45I	20	PN15	45°
801.20.90I	20	PN15	90°
801.25.45I	25	PN15	45°
801.25.90I	25	PN15	90°
801.32.45I	32	PN15	45°
801.32.90I	32	PN15	90°
801.40.45I	40	PN12	45°
801.40.90I	40	PN12	90°
801.50.45I	50	PN12	45°
801.50.90I	50	PN12	90°
801.65.45I	65	PN12	45°
801.65.90I	65	PN12	90°
801.80.45I	80	PN12	45°
801.80.90I	80	PN12	90°
801.100.45I	100	PN12	45°
801.100.90I	100	PN12	90°



Pressure INJ Mould Elbow uPVC SCJ

801

Code	Size (mm)	Type	Bend
801.125.45	125	PN12	45°
801.125.90	125	PN10	90°
801.150.45	150	PN10	45°
801.150.90	150	PN10	90°
801.175.45	175	PN10	45°
801.175.90	175	PN10	90°
801.200.45	200	PN10	45°
801.200.90	200	PN10	90°
801.225.45	225	PN10	45°
801.225.90	225	PN10	90°
801.250.45	250	PN10	45°
801.250.90	250	PN10	90°
801.300.45	300	PN10	45°
801.300.90	300	PN10	90°



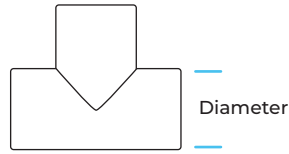
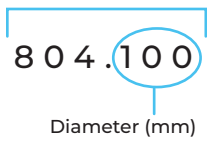
Pressure Small Tee uPVC SCJ

804

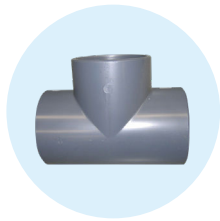
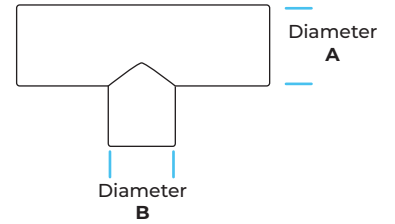
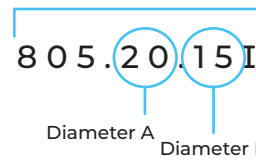
Code	Size (mm)	Type
804.15I	15	PN10
804.20I	20	PN15
804.25I	25	PN15
804.32I	32	PN15
804.40I	40	PN12
804.50I	50	PN12
804.65I	65	PN12
804.80I	80	PN12

MOULDED

INJ Mould Tee Order Code



Small Reducing Tee Order Code



Pressure INJ Mould Tee uPVC SCJ

804

Code	Size (mm)	Type
804.100	100	PN10
804.125	125	PN10
804.150	150	PN10
804.175	175	PN10
804.200	200	PN10
804.225	225	PN10
804.250	250	PN10
804.300	300	PN10



Pressure Small Reducing Tee uPVC SCJ

805

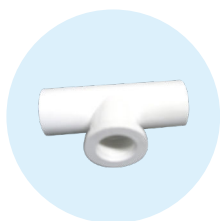
Code	Size (mm)	Type
805.20.15I	20 . 15	PN15
805.25.15I	25 . 15	PN15
805.25.20I	25 . 20	PN15
805.32.15I	32 . 15	PN15
805.32.20I	32 . 20	PN15
805.32.25I	32 . 25	PN15
805.40.15I	40 . 15	PN12
805.40.20I	40 . 20	PN12
805.40.25I	40 . 25	PN12
805.40.32I	40 . 32	PN12
805.50.15I	50 . 15	PN12
805.50.20I	50 . 20	PN12
805.50.25I	50 . 25	PN12
805.50.32I	50 . 32	PN12
805.50.40I	50 . 40	PN12
805.80.50I	80 . 50	PN12
805.100.50I	100 . 50	PN12
805.100.80I	100 . 80	PN12



Pressure Small Faucet Coupler uPVC SCJ

806

Code	Size (mm)	Type
806.15I	15	PN15
806.20I	20	PN15
806.25I	25	PN15
806.32I	32	PN15
806.40I	40	PN12
806.50I	50	PN12
806.65I	65	PN12
806.80I	80	PN12
806.100I	100	PN12



Pressure Small Faucet Tee uPVC SCJ

807

Code	Size (mm)	Type
807.15.90I	15	PN15



Press Faucet Elbow uPVC SCJ

808

Code	Size (mm)	Type
808.15.90I	15	PN15
808.20.90I	20	PN15

Small Coupler Order Code

810.15I

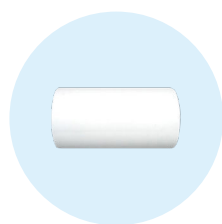
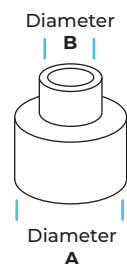
Diameter (mm)



Small Red Socket Order Code

823.20.15I

Diameter A Diameter B



Pressure Small Coupler uPVC SCJ

810

Code	Size (mm)	Type
810.15I	15	PN15
810.20I	20	PN15
810.25I	25	PN15
810.32I	32	PN15
810.40I	40	PN12
810.50I	50	PN12
810.80I	80	PN12
810.100I	100	PN12



Pressure Small Red Socket uPVC SCJ

823

Code	Size (mm)	Type
823.20.15I	20 . 15	PN15
823.25.15I	25 . 15	PN15
823.25.20I	25 . 20	PN15
823.32.15I	32 . 15	PN15
823.32.20I	32 . 20	PN15
823.32.25I	32 . 25	PN15
823.40.15I	40 . 15	PN12
823.40.20I	40 . 20	PN12
823.40.25I	40 . 25	PN12
823.40.32I	40 . 32	PN12
823.50.20I	50 . 20	PN12
823.50.25I	50 . 25	PN12
823.50.32I	50 . 32	PN12
823.50.40I	50 . 40	PN12
823.65.50I	65 . 50	PN12
823.80.50I	80 . 50	PN12
823.80.65I	80 . 65	PN12
823.100.50I	100 . 50	PN12
823.100.80I	100 . 80	PN12

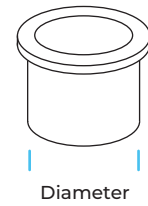
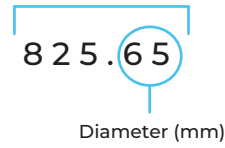
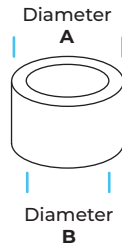
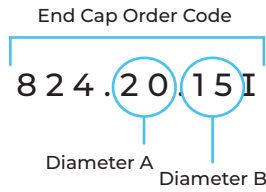


Pressure Small Valve Socket uPVC SCJ

813

Code	Size (mm)	Type
813.15I	15	PN15
813.20I	20	PN15
813.25I	25	PN15
813.32I	32	PN15
813.40I	40	PN12
813.50I	50	PN12
813.65I	65	PN12
813.80I	80	PN12
813.100I	100	PN12

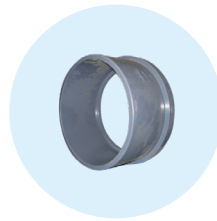
MOULDED



Pressure Small Red Bush uPVC SCJ

824

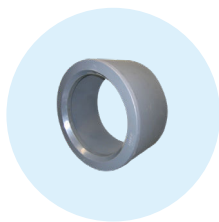
Code	Size (mm)	Type
824.20.15I	20 . 15	PN15
824.25.15I	25 . 15	PN15
824.25.20I	25 . 20	PN15
824.32.25I	32 . 25	PN15
824.40.25I	40 . 25	PN12
824.40.32I	40 . 32	PN12
824.50.25I	50 . 25	PN12
824.50.32I	50 . 32	PN12
824.50.40I	50 . 40	PN12
824.80.50I	80 . 50	PN12
824.80.65I	80 . 65	PN12
824.100.50I	100 . 50	PN12
824.100.80I	100 . 80	PN12



Pressure INJ Mould Full Face Flange uPVC

825

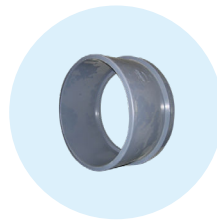
Code	Size (mm)	Type
825.65	65	
825.80	80	
825.100	100	
825.150	150	



Pressure INJ Red Bush uPVC SCJ

824

Code	Size (mm)	Type
824.125.100	125 . 100	PN10
824.150.100	150 . 100	PN10
824.150.125	150 . 125	PN10
824.175.150	175 . 150	PN10
824.200.100	200 . 100	PN10
824.200.150	200 . 150	PN10
824.200.175	200 . 175	PN10
824.225.150	225 . 150	PN10
824.225.175	225 . 175	PN10
824.225.200	225 . 200	PN10
824.300.200	300 . 200	PN10
824.300.225	300 . 225	PN10

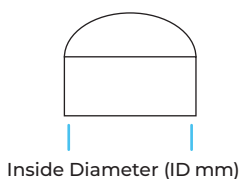
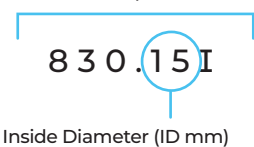


Pressure INJ Mould Stub Flange uPVC

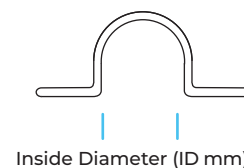
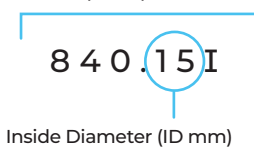
826

Code	Size (mm)	Type
826.50	50	PN10
826.65	65	PN10
826.80	80	PN10
826.100	100	PN10
826.110	110	PN10
826.125	125	PN10
826.150	150	PN10
826.175	175	PN10
826.200	200	PN10
826.225	225	PN10
826.250	250	PN10
826.300	300	PN10
826.375	375	PN10

Small End Cap Order Code



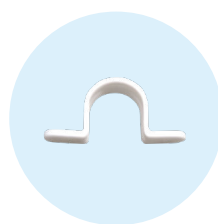
Small Pipe Clip Order Code



Pressure Small End Cap uPVC

830

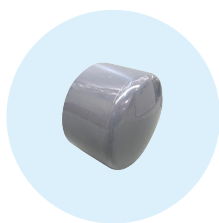
Code	Size (mm)	Type
830.15I	15	PN15
830.20I	20	PN15
830.25I	25	PN15
830.32I	32	PN15
830.40I	40	PN12
830.50I	50	PN12
830.65I	65	PN12
830.80I	80	PN12
830.100I	100	PN12



Pressure Small Pipe Clip uPVC

840

Code	Size (mm)
840.15I	15
840.20I	20
840.25I	25



Pressure INJ Mould End Cap uPVC

830

Code	Size (mm)	Type
830.100	100	PN10
830.125	125	PN10
830.150	150	PN10
830.175	175	PN10
830.200	200	PN10
830.225	225	PN10
830.250	250	PN10
830.300	300	PN10



Pressure Pipe uPVC SCJ

800

Code	Size (mm)	Type
800.15PN15.5.8.E	15 5.8	PN15
800.20PN15.5.8.E	20 5.8	PN15
800.25PN15.5.8.E	25 5.8	PN15
800.32PN12.5.8.E	32 5.8	PN12
800.32PN15.6.E	32	PN15
800.40PN12.5.8.E	40 5.8	PN12
800.40PN15.6.E	40	PN15
800.50PN12.5.8.E	50 5.8	PN12
800.50PN15.6.E	50	PN15
800.65PN12.6.E	65	PN12
800.80PN12.6.E	80	PN12
800.100PN9.6.E	100	PN9
800.100PN12.6SJ.E	100	PN12



Pressure Small Thread Endplug uPVC

837

Code	Size (mm)	Type
837.15I	15	PN15
837.20I	20	PN15
837.25I	25	PN15
837.32I	32	PN15
837.40I	40	PN12
837.50I	50	PN12



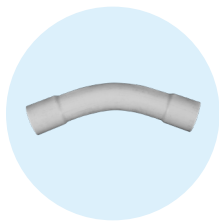
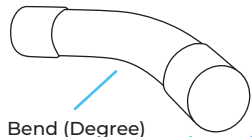
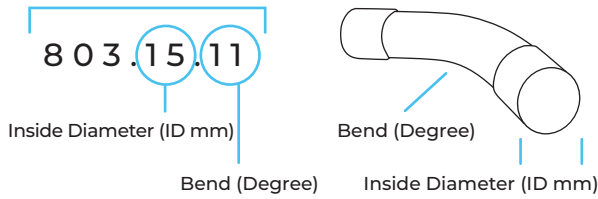
Pressure Pipe uPVC RRJ

Z800

Code	Size (mm)	Type
Z800.50PN12.6.E	50	PN12
Z800.100PN6.6.E	100	PN6
Z800.100PN9.6.E	100	PN9
Z800.150.PN6.6.E	150	PN6
Z800.150PN12.6.E	150	PN12
Z800.150PN9.6.E	150	PN9
Z800.200PN12.6.E	200	PN12

FORMED

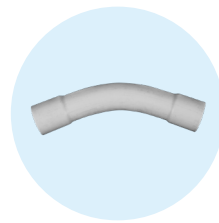
Pressure Swept Bend Order Code



Pressure Swept Bend uPVC SCJ

803

Code	Size (mm)		Bend
803.15.11	15	PN12	11°
803.15.22	15	PN12	22°
803.15.45	15	PN12	45°
803.15.90	15	PN12	90°
803.20.11	20	PN12	11°
803.20.22	20	PN12	22°
803.20.45	20	PN12	45°
803.20.90	20	PN12	90°
803.25.11	25	PN12	11°
803.25.22	25	PN12	22°
803.25.45	25	PN12	45°
803.25.90	25	PN12	90°
803.32.11	32	PN12	11°
803.32.22	32	PN12	22°
803.32.45	32	PN12	45°
803.32.90	32	PN12	90°
803.40.11	40	PN12	11°
803.40.22	40	PN12	22°
803.40.45	40	PN12	45°
803.40.90	40	PN12	90°
803.50.11	50	PN12	11°
803.50.22	50	PN12	22°
803.50.45	50	PN12	45°
803.50.90	50	PN12	90°
803.65.11	65	PN12	11°
803.65.22	65	PN12	22°
803.65.45	65	PN12	45°
803.65.90	65	PN12	90°
803.80.11	80	PN12	11°
803.80.22	80	PN12	22°



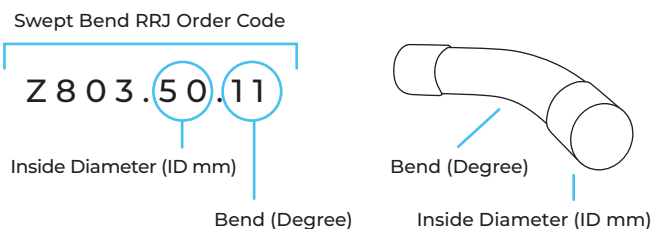
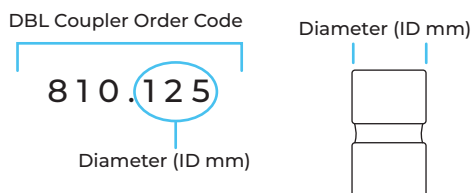
Pressure Swept Bend uPVC SCJ

803

Code	Size (mm)		Bend
803.100.11	100	PN12	11°
803.100.22	100	PN12	22°
803.100.45	100	PN12	45°
803.100.90	100	PN12	90°
803.125.11	125	PN12	11°
803.125.22	125	PN12	22°
803.125.45	125	PN12	45°
803.125.90	125	PN12	90°
803.150.11	150	PN12	11°
803.150.22	150	PN12	22°
803.150.45	150	PN12	45°
803.150.90	150	PN12	90°
803.175.11	175	PN12	11°
803.175.22	175	PN12	22°
803.175.45	175	PN12	45°
803.175.90	175	PN12	90°
803.200.11	200	PN12	11°
803.200.22	200	PN12	22°
803.200.45	200	PN12	45°
803.200.90	200	PN12	90°
803.225.11	225	PN9	11°
803.225.22	225	PN9	22°
803.225.45	225	PN9	45°
803.225.90	225	PN9	90°
803.250.45	250	PN9	45°
803.250.90	250	PN9	90°
803.300.11	300	PN9	11°
803.300.22	300	PN9	22°
803.300.45	300	PN9	45°
803.300.90	300	PN9	90°

Continue to the next column.

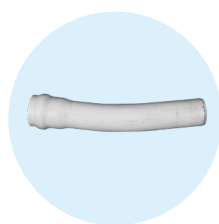
FORMED



Pressure DBL Coupler uPVC SCJ

810

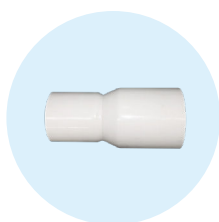
Code	Size (mm)	Type
810.125	125	PN12
810.150	150	PN12
810.155.150	155 . 150	PN12
810.200	200	PN15
810.225	225	PN9
810.300I	300	PN9



Pressure Swept Bend RRJ

Z803

Code	Size (mm)	Type	Bend
Z803.50.11	50	PN12	11°
Z803.50.22	50	PN12	22°
Z803.50.45	50	PN12	45°
Z803.50.90	50	PN12	90°
Z803.65.11	65	PN12	11°
Z803.65.22	65	PN12	22°
Z803.65.45	65	PN12	45°
Z803.65.90	65	PN12	90°
Z803.80.11	80	PN12	11°
Z803.80.22	80	PN12	22°
Z803.80.45	80	PN12	45°
Z803.80.90	80	PN12	90°
Z803.100.11	100	PN12	11°
Z803.100.22	100	PN12	22°
Z803.100.45	100	PN12	45°
Z803.100.90	100	PN12	90°
Z803.125.11	125	PN12	11°
Z803.125.22	125	PN12	22°
Z803.125.45	125	PN12	45°
Z803.125.90	125	PN12	90°
Z803.150.11	150	PN12	11°
Z803.150.22	150	PN12	22°
Z803.150.45	150	PN12	45°
Z803.150.90	150	PN12	90°
Z803.175.11	175	PN12	11°
Z803.175.22	175	PN12	22°
Z803.175.45	175	PN12	45°
Z803.175.90	175	PN12	90°
Z803.200.11	200	PN12	11°
Z803.200.22	200	PN12	22°
Z803.200.45	200	PN12	45°
Z803.200.90	200	PN12	90°



Pressure SCJ Red Socket uPVC

823

Code	Size (mm)	Type
823.125.100	125 . 100	PN12
823.150.100	150 . 100	PN12
823.150.125	150 . 125	PN12
823.175.150	175 . 150	PN12
823.200.100	200 . 100	PN12
823.200.150	200 . 150	PN12
823.200.175	200 . 175	PN12
823.225.150	225 . 150	PN9
823.225.175	225 . 175	PN9
823.225.200	225 . 200	PN9
823.250.200	250 . 200	PN9
823.300.200	300 . 200	PN9
823.300.225	300 . 225	PN9
823.300.250	300 . 250	PN9

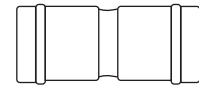
FORMED

FORMED / FABRICATED

Coupler Double Order Code

Z 810 . 50 D

Diameter (ID mm)



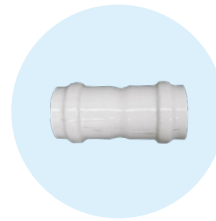
Diameter (ID mm)



Pressure Swept Bend RRJ

Z803

Code	Size (mm)	Type	Bend
Z803.225.11	225	PN9	11°
Z803.225.22	225	PN9	22°
Z803.225.45	225	PN9	45°
Z803.225.90	225	PN9	90°
Z803.300.11	300	PN9	11°
Z803.300.22	300	PN9	22°
Z803.300.45	300	PN9	45°
Z803.300.90	300	PN9	90°
Z803.375.11	375	PN9	11°
Z803.375.22	375	PN9	22°
Z803.375.45	375	PN9	45°
Z803.375.90	375	PN9	90°



Pressure Coupler Double uPVC RRJ

Z810

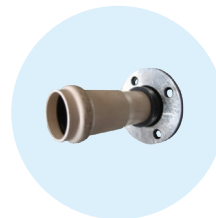
Code	Size (mm)	Type	Bend
806.150	150	PN12	Faucet
813.150	150	PN12	Valve Socket
Z810.50D	50	PN12	
Z810.65D	65	PN12	
Z810.80D	80	PN12	
Z810.100D	100	PN12	
Z810.125D	125	PN12	
Z810.150D	150	PN12	
Z810.155.150	155	PN12	
Z810.175D	175	PN12	
Z810.200D	200	PN12	
Z810.225D	225	PN9	
Z810.300D	300	PN9	
Z810.375D	375	PN9	



Pressure Coupler Single RRJ

Z810

Code	Size (mm)	Type
Z810.50	50	PN12
Z810.65	65	PN12
Z810.80	80	PN12
Z810.100	100	PN12
Z810.125	125	PN12
Z810.150	150	PN12
Z810.175	175	PN12
Z810.200	200	PN12
Z810.225	225	PN9
Z810.300	300	PN9
Z810.375	375	PN9



Flange Adaptors RRJ

Z826

Code	Size (mm)
Z826.50	50
Z826.65	65
Z826.80	80
Z826.100	100
Z826.150	150
Z826.200	200

Solo Plastics

0800 765 675

Auckland 33 Honan Place, Avondale
Phone 09 828 9594

Christchurch 72 Hayton Road, Wigram
Phone 03 353 9291

solo.sales@solo.co.nz



solo

Fabricating for a better tomorrow
He waka eke noa



solo.co.nz