



solo

Fabricating for a better tomorrow
He waka eke noa

solo

MISCELLANEOUS PRODUCTS

0800 765 675

Auckland 33 Honan Place, Avondale
Phone 09 828 9594

Christchurch 72 Hayton Road, Wigram
Phone 03 353 9291

solo.sales@solo.co.nz

solo.co.nz

FABRICATING FOR A BETTER TOMORROW

Solo's Vision is "*Fabricating for a Better Tomorrow*".
We sustainably manufacture and import infrastructure solutions in PE and PVC for the people of New Zealand, focusing on values that help to conserve and protect our planet whilst always watching over our whānau. Now *that's* standing for better...

solo.co.nz



MISCELLANEOUS PRODUCTS RANGE

PRODUCTS

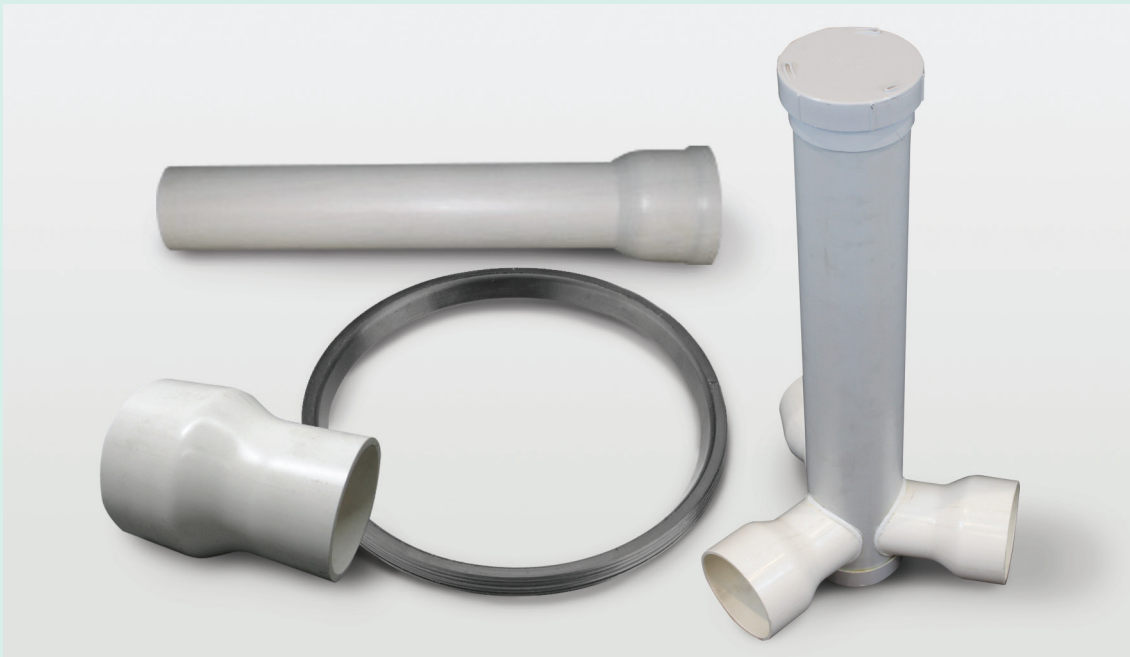
4-6 Valves | Adaptors
Connectors | Rainheads
Rainwater Angles
Rings | Locks | Pipe
Drilling Patterns

TANKS

7 Retention and
Detention Tanks

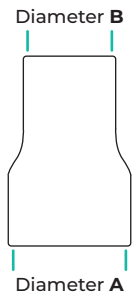
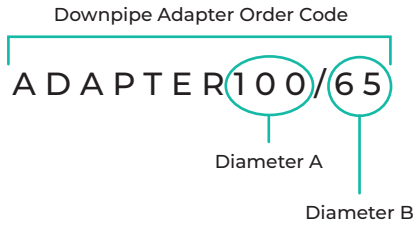
PIPES

8-11 SN8 EZYFLOW
SN16 EZYPIPE
FITTINGS

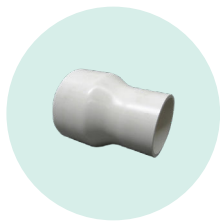


PRODUCTS

Code breakdown



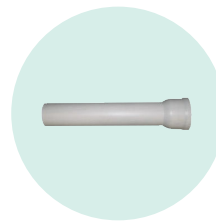
Depending on the type of product, the following illustrations explain what the code numbers mean.



Downpipe Adapter

ADAPTER

| Code | Size (mm) |
|----------------------|-----------|
| ADAPTER100/65 | 100 . 65 |
| ADAPTER100/80 | 100 . 80 |



Pan Connector for DWV

PAN

| Code | Size (mm) |
|------------|-----------|
| PAN | 100 |



Splitter Valves

SPLITTER

| Code | Size (mm) |
|---------------------|-------------|
| SPLITTER2WAY | 100mm 2 Way |
| SPLITTER3WAY | 100mm 3 Way |



Rainheads

RAIN HEADS

| Code |
|------------------|
| RAINHEADS |



Rainwater Angles

RAIN WATER

| Code |
|--------------------|
| RAINWATER 1 |
| RAINWATER 2 |
| RAINWATER 3 |

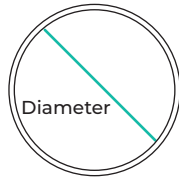
Continue to the next column.

PRODUCTS

Rubber Z Ring Order Code

860.50

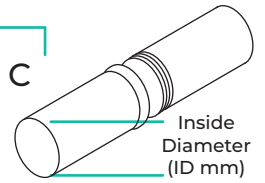
Diameter (mm)



Downpipe Adapter Order Code

SNAPLOCK225SOC

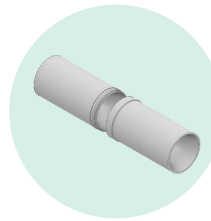
Inside Diameter (ID mm)



Rubber Z Ring

860

| Code | Size (mm) |
|---------|-----------|
| 860.50 | 50 |
| 860.65 | 65 |
| 860.80 | 80 |
| 860.100 | 100 |
| 860.110 | 110 |
| 860.125 | 125 |
| 860.150 | 150 |
| 860.155 | 155 |
| 860.175 | 175 |
| 860.200 | 200 |
| 860.225 | 225 |
| 860.300 | 300 |
| 860.375 | 375 |



Snap Lock Pipe Socket SN16

SNAP LOCK

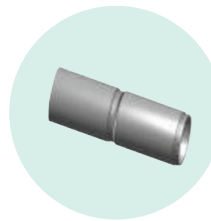
| Code | Size (mm) | Length (mm) |
|------------------|-----------|-------------|
| SNAPLOCK225SOC | 225 | 1150 |
| SNAPLOCK225SOCSP | 225 | 1150 |
| SNAPLOCK225SP | 225 | 1150 |



Rubber Anger Lock Ring

F576

| Code | Size (mm) |
|------------|-----------|
| F576.DN110 | 110 |
| F576.DN160 | 160 |
| F576.DN200 | 200 |
| F576.DN250 | 250 |
| F576.DN315 | 315 |
| F576.DN400 | 400 |



Jacking Pipe for Reline or Slip Line Pipe

JACKING PIPE

Code

JACKING PIPE



Manifolds

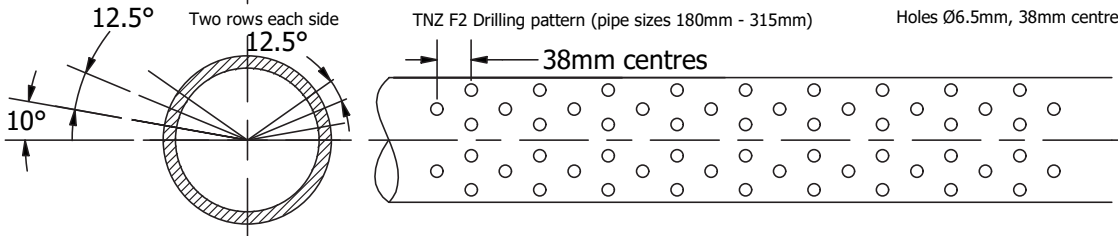
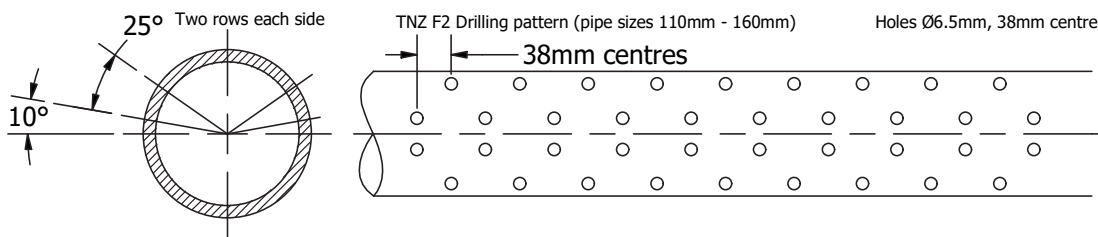
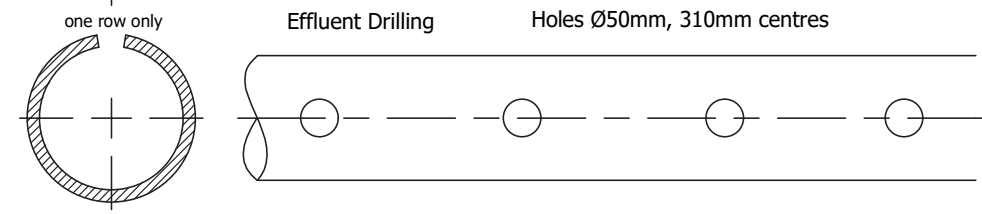
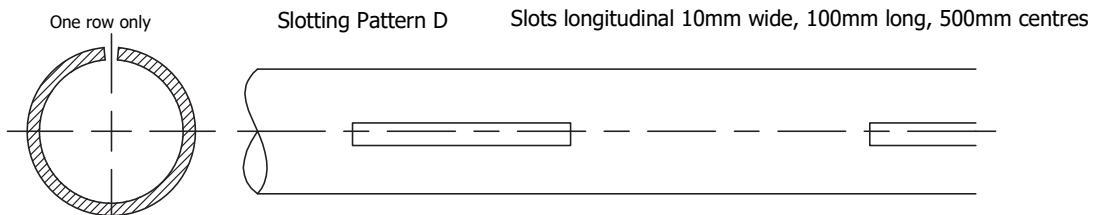
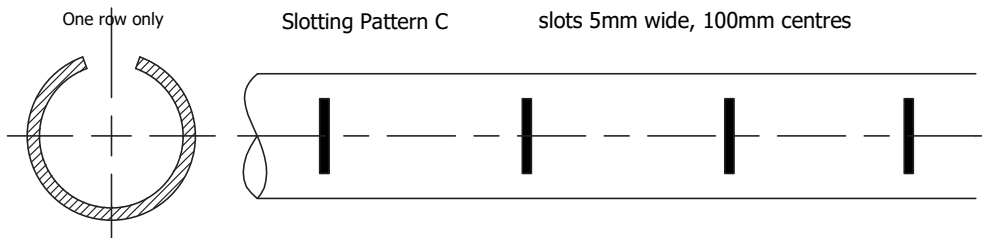
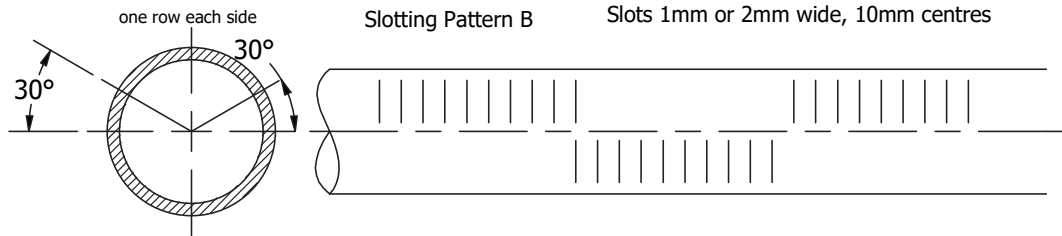
MANIFOLDS

Code

PE MANIFOLDS

PVC MANIFOLDS

Drilling and Slotting patterns



Tolerances

Slotting

- minimum O/D for pattern B is 42mm (32mm DWV)
- minimum O/D for pattern B is 250mm

Drilling

- minimum O/D for drilling is 100mm (can do 42mm (32mm DWV) with special setup)
- minimum O/D for drilling is 355mm

RETENTION AND DETENTION TANKS

Whether you require storage solutions or stormwater retention systems, Solo Plastics offers designs tailored to your needs.



ISO TYPE 5
AS/NZS 5065:2005



Available diameters from 600mm to 3200mm



1-22m long



600-3200mm diameter



Easily connected on-site



Fully recyclable



Lightweight



Totally flexible design: sumps risers, connectors



100-year design life



- Suitable for under lawn installations and for under driveway installations.
- For under driveway tanks we calculate the required wall thickness using EasyPipe software.
- Made to the required volume.
- Outlet flow designed to suit the application and local body requirements e.g. A silt trap as required by the Auckland City Council.
- Calculations are in accordance with AS/NZS 2566.1:1998 – Buried Flexible pipelines: Structural Design Design and installation parameters used are in accordance with AS/NZS 2566.2:2002 – Buried flexible pipelines - Installation



- Available as a Detention, Retention or combo tank system.
- Fully UV stabilised.
- Smooth internally for easy cleaning, ribbed externally for extra strength.
- 600mm access entry with push on inspection cap.
- Inlets, outlets, access, joins and pump locations can be configured in any way that is necessary.
- Anti-Buoyancy design and solution can be provided.

Free delivery for tanks up to 6 meters around Auckland. Delivery for longer tanks is based on an hourly charge. For all information please contact Solo: solo.sales@solo.co.nz

PIPES

EZYFLOW™ and EZYPIPE™

New Zealand made corrugated PE pipe system utilising the latest manufacturing technology,

- EZYFLOW™ SN8 is made to a SN8 stiffness rating under the AS/NZS 5065:2005 standard, which makes it ideal for road culverts and gravity pipelines.
- EZYFLOW™ SN8 Culvert Pipes are designed and manufactured to be lightweight, with a twin wall construction that minimizes the need for heavy lifting equipment. The lightweight nature of EZYFLOW™ SN8 allows it to be handled by two people while maintaining its high durability. This product offers significant savings in time, machinery, labour and therefore overall cost.



- EZYPIPE™ is a New Zealand made corrugated PE pipe system that is ideal for civil applications. Utilising the latest manufacturing technology. EZYPIPE™ is made to a SN16 stiffness rating under the AS/NZS 5065:2005 standard, which makes it ideal for road culverts and gravity pipelines in civil applications.
- Supplied in 6 metre lengths, EZYPIPE™ is very light, yet incredibly strong, and able to withstand high loads and severe impacts.



EZYFLOW™ and EZYPIPE™ pipes are designed and manufactured to produce **zero toxic** leaching.



RUBBER RINGS

NZ-Made 100yr life rings are available for joining pipes.

FLUMING

Single-wall half-pipe variants are available.

HALF LENGTHS

Are available on request.

DN is the **Nominal Diameter** which for these pipes corresponds exactly to the ID - Internal Diameter – avoiding the possibility of confusion.

SN Rating is the Nominal Stiffness expressed as vertical load in N/m/m. This can be provided to EasyPipe software and can be used to calculate the required SN Rating for any given section. SN Ratings are equal to the concrete class i.e. Class 2 is equal to SN4 and Class 4 is equal to SN16.

The **nominal stiffness ratings** for flexible pipes are typically SN4, SN6, SN8, SN12, and SN16, where the number represents the stiffness in kN/m². For example, EZYFLOW™ SN8 pipe has a nominal stiffness of 8000 N/m², and EZYPIPE™ SN16 has a nominal stiffness of 16000 N/m².

SN8 EZYFLOW | PIPE



ZC EZYFLOW
SN8 Pipe



| Code | Type | Size (M) | Weight(Kg) |
|-----------------|---------------|----------|------------|
| ZC.100.SN8.6.0 | ZC ID100 SN8 | 6m | 5kg |
| ZC.150.SN8.6.0 | ZC ID150 SN8 | 6m | 8kg |
| ZC.225.SN8.6.0 | ZC ID225 SN8 | 6m | 17kg |
| ZC.300.SN8.6.0 | ZC ID300 SN8 | 6m | 28kg |
| ZC.375.SN8.6.0 | ZC ID375 SN8 | 6m | 49.30kg |
| ZC.450.SN8.6.0 | ZC ID450 SN8 | 6m | 75kg |
| ZC.525.SN8.6.0 | ZC ID525 SN8 | 6m | 101.10kg |
| ZC.600.SN8.6.0 | ZC ID600 SN8 | 6m | 122.20kg |
| ZC.800.SN8.6.0 | ZC ID800 SN8 | 6m | 212.00kg |
| ZC.1000.SN8.6.0 | ZC ID1000 SN8 | 6m | 344.10kg |



ISO TYPE 5
AS/NZS 5065:2005



Fully
recyclable



Lightweight



100-year
design life

Key Benefits

- Best resistance to abrasion.
- Superb hydraulic performance.
- Extremely strong.
- Less transport costs and install costs.
- Good chemical stability.
- Lighter than concrete or PVC.
- Completely recyclable.
- Superb biological resistance.
- Easy to cut to length with hand tools.
- Less transport costs and install costs.
- Quick to install – laying in 6m lengths.
- Accompanied by a full range of fittings.
- Can be connected to any existing or potential pipe or manhole.
- Can be used in any soil conditions with a 100 year life.
- Best seismic resistance.

SN16 EZYPIPE | PIPE



EZYPIPE SN16 Pipe



| Code | Type | Size (M) |
|------------------|----------------|----------|
| ZC.225.SN16.6.0 | ZC ID225 SN16 | 6m |
| ZC.300.SN16.6.0 | ZC ID300 SN16 | 6m |
| ZC.375.SN16.6.0 | ZC ID375 SN16 | 6m |
| ZC.450.SN16.6.0 | ZC ID450 SN16 | 6m |
| ZC.525.SN16.6.0 | ZC ID525 SN16 | 6m |
| ZC.600.SN16.6.0 | ZC ID600 SN16 | 6m |
| ZC.800.SN16.6.0 | ZC ID800 SN16 | 6m |
| ZC.1000.SN16.6.0 | ZC ID1000 SN16 | 6m |



ISO TYPE 5
AS/NZS 5065:2005



Fully recyclable



Lightweight



100-year design life

Key Benefits

- Best resistance to abrasion.
- Superb hydraulic performance.
- Good chemical stability.
- Superb biological resistance.
- Can be used in any soil conditions with a 100 year asset life.
- Extremely strong and best seismic resistance.
- Less transport costs and install costs.
- Quick to install – laying in 6m lengths.
- Safe when installing due to its lightweight and flexible nature.
- Bends allow for the most direct routes and reduce the need for manholes.
- Can be connected to any existing or potential pipe or manhole.
- Accompanied by a full range of fittings.



FITTINGS

- For fittings 100-200mm use Fernco products.
- For fittings 225-450 Refer to the next column for corresponding codes. Lead time is 2 weeks.
- For fittings 525+ contact us for a fabrication quote.

| DN | MANHOLE CONNECTOR | T JUNCTION | Y JUNCTION | COUPLER |
|-----|-------------------|----------------|----------------|--------------|
| 225 | ZCMC.225 | ZC1504H.225.90 | ZC1504H.225.45 | ZC1511.225HD |
| 300 | ZCMC.300 | ZC1504H.300.90 | ZC1504H.300.45 | ZC1511.300HD |
| 375 | ZCMC.375 | ZC1504H.375.90 | ZC1504H.375.45 | ZC1511.375HD |
| 450 | ZCMC.450 | ZC1504H.450.90 | ZC1504H.450.45 | ZC1511.450HD |

| DN | REDUCER | 90 DEG BEND | 45 DEG BEND | 11 DEG BEND |
|-----|-----------------|----------------|----------------|----------------|
| 225 | ZC1523.225.150C | ZC1501H.225.90 | ZC1501H.225.45 | ZC1501H.225.11 |
| 300 | ZC1523.300.225C | ZC1501H.300.90 | ZC1501H.300.45 | ZC1501H.300.11 |
| 375 | ZC1523.375.300C | ZC1501H.375.90 | ZC1501H.375.45 | ZC1501H.375.11 |
| 450 | ZC1523.450.375C | ZC1501H.450.90 | ZC1501H.450.45 | ZC1501H.450.11 |

PIPES

OUR HDPE CULVERT PIPES CAN BE ADAPTED IN MANY WAYS TO FIT TO EXISTING CONCRETE, PE OR PVC CULVERTS AND EVEN HAVE FLOOD GATES ATTACHED IF REQUIRED.



100 year asset life.
100 year life expectancy.



Smooth Bore.
Smooth interior/bore to increase flow rates.



Connect-ability.
Socket (female) / Spigot (male) push fit connections to quickly connect to other pipes.



Adaptability.
Pipe can be drilled/perforated for drainage and it does not affect its strength.



Save cost and wastage.
Pipes can be manufactured to length to save cost and wastage.

USED FOR:

- Farm culverts
- Access way culverts
- Civil temporary works
- Forestry culverts
- Piping water races or creeks
- Stop bank culverts
- Flumes for surface water management
- Helping with upstream fish passage - through the installation of baffles

Solo Plastics

0800 765 675

Auckland 33 Honan Place, Avondale
Phone 09 828 9594

Christchurch 72 Hayton Road, Wigram
Phone 03 353 9291

solo.sales@solo.co.nz



solo.co.nz