



**solo**

Fabricating for a better tomorrow  
*He waka eke noa*

# solo EF FITTINGS RANGE

**0800 765 675**

**Auckland** 33 Honan Place, Avondale  
Phone 09 828 9594

**Christchurch** 72 Hayton Road, Wigram  
Phone 03 353 9291

[solo.sales@solo.co.nz](mailto:solo.sales@solo.co.nz)

[solo.co.nz](http://solo.co.nz)



# FABRICATING FOR A BETTER TOMORROW

Solo's Vision is "*Fabricating for a Better Tomorrow*".  
We sustainably manufacture and import infrastructure solutions in PE and PVC for the people of New Zealand, focusing on values that help to conserve and protect our planet whilst always watching over our whānau. Now *that's* standing for better...

[solo.co.nz](http://solo.co.nz)



# EF FITTINGS RANGE

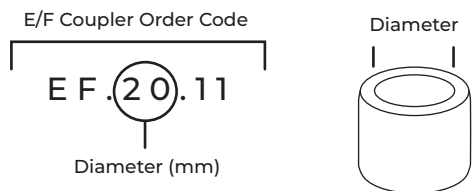
## FITTINGS

4-7 Couplers | Elbows | Tees  
Saddles | Reducers | Caps

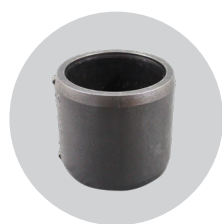


# FITTINGS

## Code breakdown



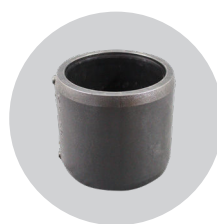
Depending on the type of product, the following illustrations explain what the code numbers mean.



### PE E/F Coupler



Code	Size (mm)	Type
EF.20.11	20	SDR11
EF.25.11	25	SDR11
EF.32.11	32	SDR11
EF.40.11.17	40	SDR11/SDR17
EF.50.11.17	50	SDR11/SDR17
EF.63.11.17	63	SDR11/SDR17
EF.75.11.17	75	SDR11/SDR17
EF.90.11.17	90	SDR11/SDR17
EF.110.11.17	110	SDR11/SDR17
EF.125.11.17	125	SDR11/SDR17
EF.140.11.17	140	SDR11/SDR17
EF.160.11.17	160	SDR11/SDR17
EF.180.11.17	180	SDR11/SDR17
EF.200.11.17	200	SDR11/SDR17
EF.225.11.17	225	SDR11/SDR17
EF.250.11.17	250	SDR11/SDR17
EF.280.11.17	280	SDR11/SDR17
EF.315.11.17	315	SDR11/SDR17
EF.355.11.17	355	SDR11/SDR17
EF.355.17	355	SDR11
EF.400.11	400	SDR11
EF.400.11.17	400	SDR11/SDR17
EF.400.17	400	SDR17
EF.450.11	450	SDR11
EF.450.17	450	SDR17
EF.500.11	500	SDR11



### PE E/F Coupler



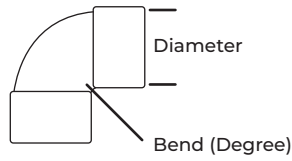
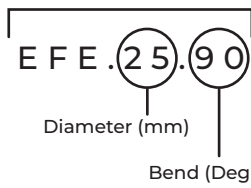
Code	Size (mm)	Type
EF.500.17	500	SDR17
EF.560.11	560	SDR11
EF.560.17	560	SDR17
EF.630.11	630	SDR11
EF.630.17	630	SDR17
EF.710.11	710	SDR11
EF.710.17	710	SDR17
EF.800.11	800	SDR11
EF.800.17	800	SDR17
EF.900.11	900	SDR11
EF.900.17	900	SDR17
EF.1000.11	1000	SDR11
EF.1000.17	1000	SDR17
EF.1200.17	1200	SDR17
EF.1400.17	1400	SDR17

Continue to the next column.

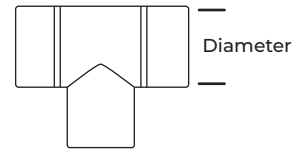


# FITTINGS

E/F Elbow Order Code



E/F Tee Order Code



## E/F Elbows



Code	Size (mm)	Type	Bend
EFE.25.90	25	SDR11/SDR17	90°
EFE.32.45	32	SDR11/SDR17	45°
EFE.32.90	32	SDR11/SDR17	90°
EFE.40.45	40	SDR11/SDR17	45°
EFE.40.90	40	SDR11/SDR17	90°
EFE.50.45	50	SDR11/SDR17	45°
EFE.50.90	50	SDR11/SDR17	90°
EFE.63.45	63	SDR11/SDR17	45°
EFE.63.90	63	SDR11/SDR17	90°
EFE.75.45	75	SDR11/SDR17	45°
EFE.75.90	75	SDR11/SDR17	90°
EFE.90.45	90	SDR11/SDR17	45°
EFE.90.90	90	SDR11/SDR17	90°
EFE.110.22	110	SDR11/SDR17	22°
EFE.110.45	110	SDR11/SDR17	45°
EFE.110.90	110	SDR11/SDR17	90°
EFE.125.45	125	SDR11/SDR17	45°
EFE.125.90	125	SDR11/SDR17	90°
EFE.160.45	160	SDR11/SDR17	45°
EFE.160.90	160	SDR11/SDR17	90°
EFE.180.22.5	180	SDR11/SDR17	22°
EFE.180.45	180	SDR11/SDR17	45°
EFE.180.90	180	SDR11/SDR17	90°
EFE.200.45	200	SDR11/SDR17	45°
EFE.200.90	200	SDR11/SDR17	90°
EFE.225.45	225	SDR11/SDR17	45°
EFE.225.90	225	SDR11/SDR17	90°
EFE.250.45	250	SDR11/SDR17	45°
EFE.250.90	250	SDR11/SDR17	90°

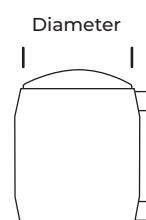
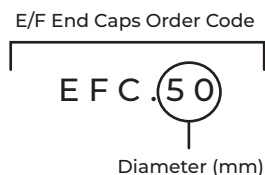
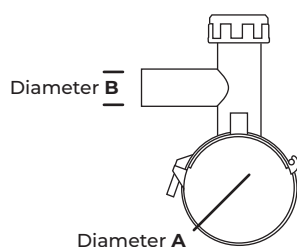
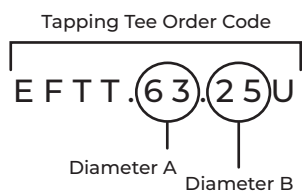


## PE E/F Tees



Code	Size (mm)	Type
EFT.20	20	SDR11
EFT.25	25	SDR11
EFT.32	32	SDR11
EFT.40	40	SDR11
EFT.50	50	SDR11
EFT.63	63	SDR11
EFT.75	75	SDR11
EFT.90	90	SDR11
EFT.110	110	SDR11
EFT.125	125	SDR11
EFT.160	160	SDR11
EFT.180	180	SDR11
EFT.250	250	SDR11

# FITTINGS



## PE E/F Tapping Tees



Code	Size (mm)	Type	Bend
<b>EFTT.63.25U</b>	63 . 25	Tapping Tee with underpart SDR11	90°
<b>EFTT.63.32U</b>	63 . 32	Tapping Tee with underpart SDR11	90°
<b>EFTT.110.32U</b>	110 . 32	Tapping Tee with underpart SDR11	90°
<b>EFTT.125.25U</b>	125 . 25	Tapping Tee with underpart SDR11	90°
<b>EFTT.125.32U</b>	125 . 32	Tapping Tee with underpart SDR11	90°
<b>EFTT.125.63U</b>	125 . 63	Tapping Tee with underpart SDR11	90°
<b>EFTT.160.63U</b>	160 . 63	Tapping Tee with underpart SDR11	90°
<b>EFTT.180.25U</b>	180 . 25	Tapping Tee with underpart SDR11	90°
<b>EFTT.180.32U</b>	180 . 32	Tapping Tee with underpart SDR11	90°
<b>EFTT.180.63U</b>	180 . 63	Tapping Tee with underpart SDR11	90°
<b>EFTT.200.63U</b>	200 . 63	Tapping Tee with underpart SDR11	90°
<b>EFTT.225.32U</b>	225 . 32	Tapping Tee with underpart SDR11	90°
<b>EFTT.200.63U</b>	200 . 63	Tapping Tee with underpart SDR11	90°
<b>EFTT.250.25</b>	250 . 25	Tapping Tee SDR11	90°
<b>EFTT.250.32</b>	250 . 32	Tapping Tee SDR11	90°
<b>EFTT.250.63</b>	250 . 63	Tapping Tee SDR11	90°
<b>EFTT.315.32</b>	315 . 32	Tapping Tee SDR11	90°



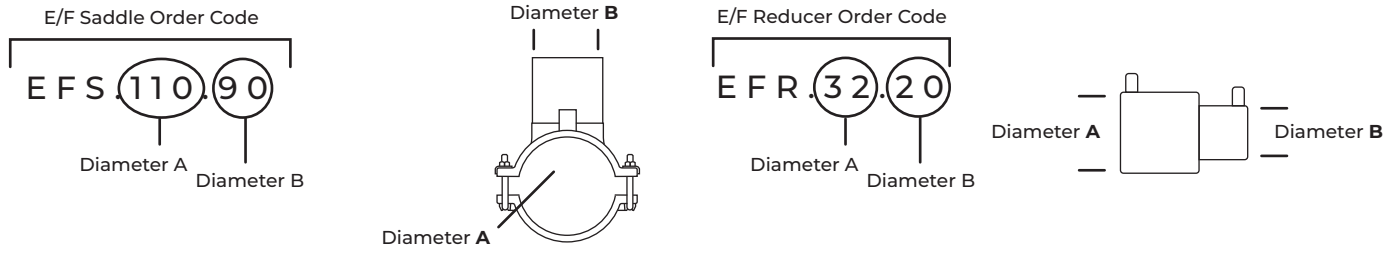
## PE E/F End Caps



Code	Size (mm)	Type
<b>EFC.50</b>	50	SDR11
<b>EFC.63</b>	63	SDR11
<b>EFC.90</b>	90	SDR11
<b>EFC.110</b>	110	SDR11
<b>EFC.125</b>	125	SDR11
<b>EFC.160</b>	160	SDR11
<b>EFC.180</b>	180	SDR11



# FITTINGS



## PE E/F Saddles

EFS

Code	Size (mm)	Type	Bend
<b>EFFLEXREST</b>		Flex Restraint	
<b>EFS.110.90</b>	110 . 90	Saddle	90°
<b>EFS.125.40U</b>	125 . 40	Saddle with underpart	90°
<b>EFS.125.63U</b>	125 . 63	Saddle with underpart	90°
<b>EFS.160.110</b>	160 . 110	Saddle	90°
<b>EFS.160.63U</b>	160 . 63	Saddle with underpart	90°
<b>EFS.180.100PVC</b>	180 . 100	Saddle	90°
<b>EFS.180.110</b>	180 . 110	Saddle	90°
<b>EFS.180.125</b>	180 . 125	Saddle	90°
<b>EFS.180.63</b>	180 . 63	Saddle	90°
<b>EFS.180.63U</b>	180 . 63	Saddle with underpart	90°
<b>EFS.200.125</b>	200/225 . 125	Saddle	90°
<b>EFS.200.63U</b>	200 . 63	Saddle with underpart	90°
<b>EFS.250.125</b>	250/280 . 125	Saddle	90°
<b>EFS.250.63</b>	250 X 63 PE100	Saddle	90°



## PE E/F Reducers

EFR

Code	Size (mm)	Type
<b>EFR.32.20</b>	32 . 20	SDR11
<b>EFR.32.25</b>	50 . 25	SDR11
<b>EFR.50.32</b>	50 . 32	SDR11
<b>EFR.63.32</b>	63 . 32	SDR11
<b>EFR.63.40</b>	63 . 40	SDR11
<b>EFR.63.50</b>	63 . 50	SDR11
<b>EFR.75.63</b>	75 . 63	SDR11



## PE E/F Reducers

EFR

Code	Size (mm)	Type
<b>EFR.90.63</b>	90 . 63	SDR11
<b>EFR.110.63</b>	110 . 63	SDR11
<b>EFR.110.90</b>	110 . 90	SDR11
<b>EFR.125.90</b>	125 . 90	SDR11
<b>EFR.160.110</b>	160 . 110	SDR11
<b>EFR.180.125</b>	180 . 125	SDR11

Continue to the next column.



# Solo Plastics

**0800 765 675**

**Auckland** 33 Honan Place, Avondale  
Phone 09 828 9594

**Christchurch** 72 Hayton Road, Wigram  
Phone 03 353 9291

[solo.sales@solo.co.nz](mailto:solo.sales@solo.co.nz)



Fabricating for a better tomorrow  
*He waka eke noa*



[solo.co.nz](http://solo.co.nz)