



solo

Fabricating for a better tomorrow
He waka eke noa

solo

MISCELLANEOUS PRODUCTS

0800 765 675

Auckland 33 Honan Place, Avondale
Phone 09 828 9594

Christchurch 72 Hayton Road, Wigram
Phone 03 353 9291

solo.sales@solo.co.nz

solo.co.nz

FABRICATING FOR A BETTER TOMORROW

Solo's Vision is "*Fabricating for a Better Tomorrow*".
We sustainably manufacture and import infrastructure solutions in PE and PVC for the people of New Zealand, focusing on values that help to conserve and protect our planet whilst always watching over our whānau. Now *that's* standing for better...

solo.co.nz



MISCELLANEOUS PRODUCTS RANGE

PRODUCTS

- 4-6 Adaptors | Valves
- Connectors | Rainheads
- Rainwater Angles
- Pipe | Manifolds
- Drilling Patterns

TANKS

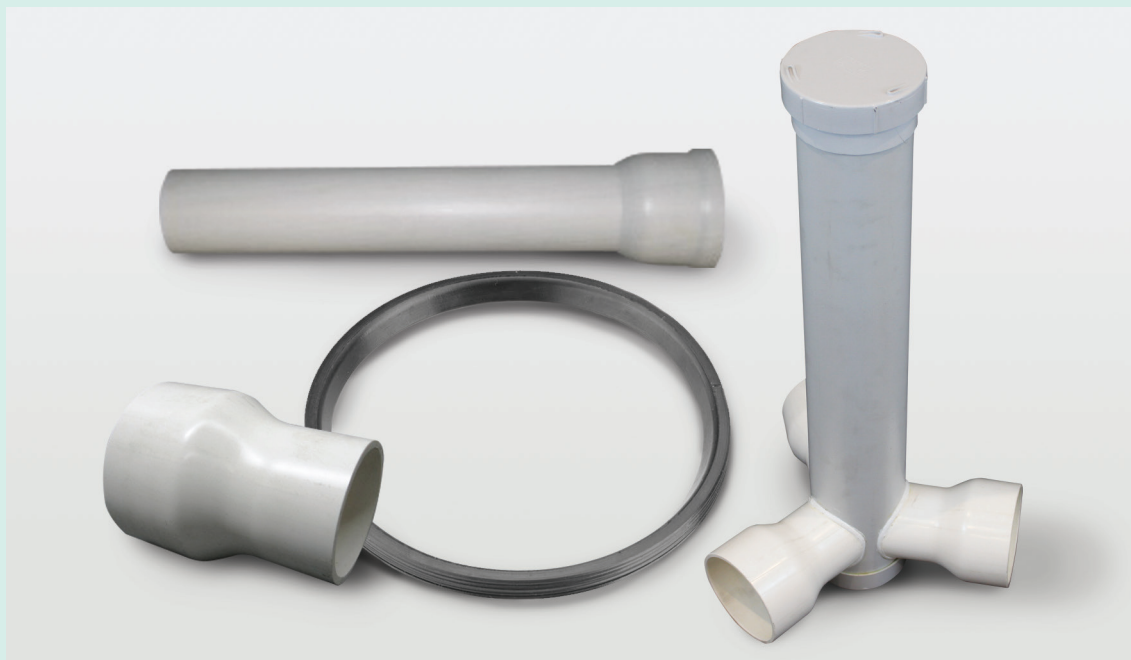
- 7 Retention and Detention Tanks

PIPES

- 8-9 TWINWALL PIPES
- FARMPipe SN6
- CIVILPIPE SN8 & SN16

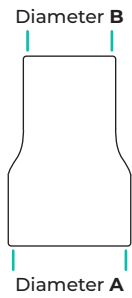
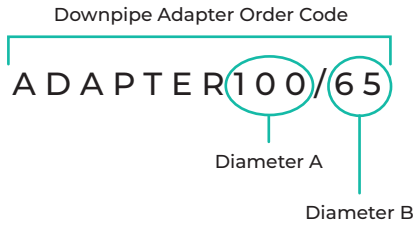
TWINWALL PIPE | RUBBER RING AND FITTINGS

- 10 Coupler | Rubber Ring
- Bends | Junctions
- Double Couplers
- Manhole Connectors

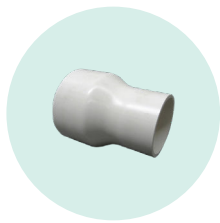


PRODUCTS

Code breakdown



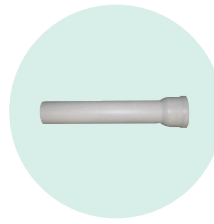
Depending on the type of product, the following illustrations explain what the code numbers mean.



Downpipe Adapter

ADAPTER

Code	Size (mm)
ADAPTER100/65	100 . 65
ADAPTER100/80	100 . 80



Pan Connector for DWV

PAN

Code	Size (mm)
PAN	100



Splitter Valves

SPLITTER

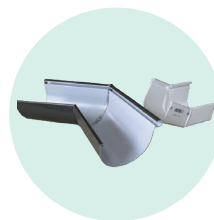
Code	Size (mm)
SPLITTER2WAY	100mm 2 Way
SPLITTER3WAY	100mm 3 Way



Rainheads

RAIN HEADS

Code
RAINHEADS

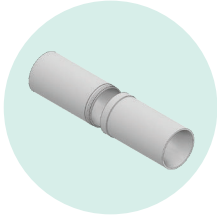
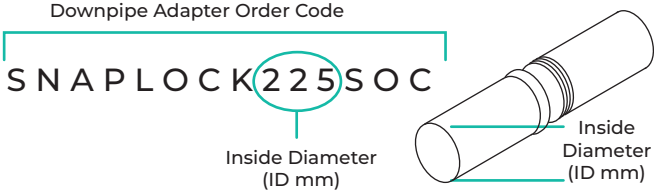


Rainwater Angles

RAIN WATER

Code
RAINWATER 1
RAINWATER 2
RAINWATER 3

PRODUCTS



Snap Lock Pipe Socket SN16



Code	Size (mm)	Length (mm)
SNAPLOCK225SOC	225	1150
SNAPLOCK225SOCSP	225	1150
SNAPLOCK225SP	225	1150

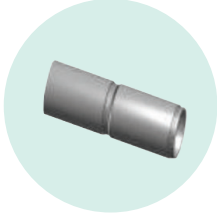


Manifolds



Code

PE MANIFOLDS
PVC MANIFOLDS



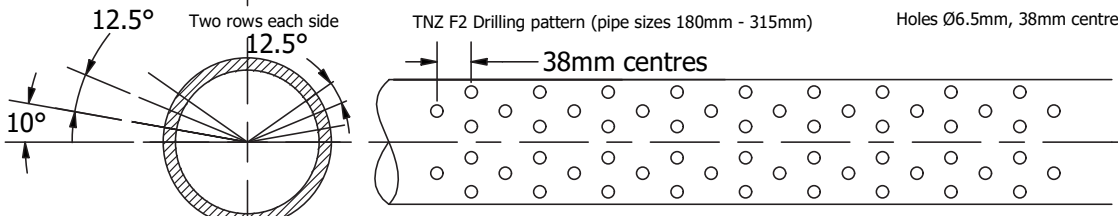
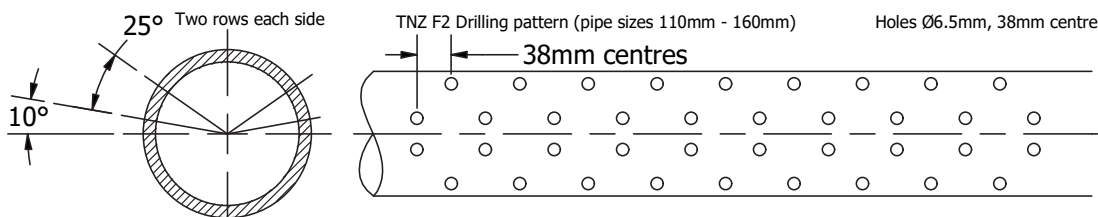
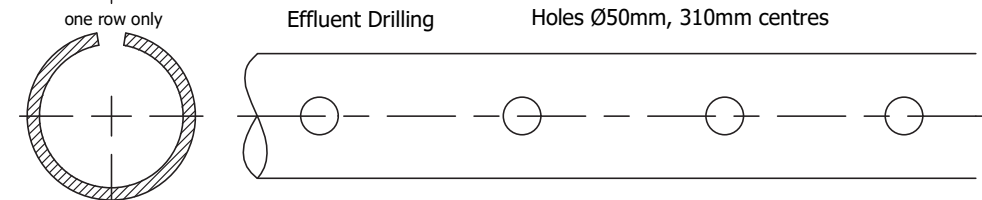
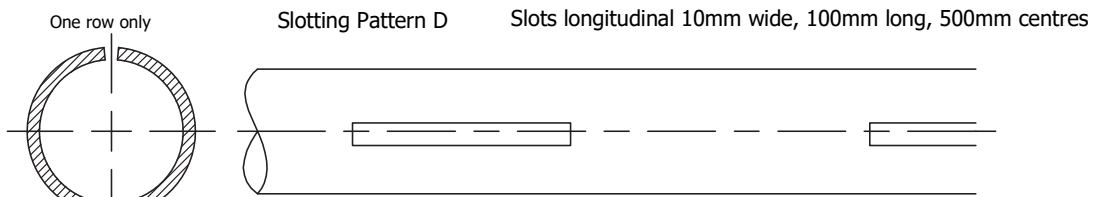
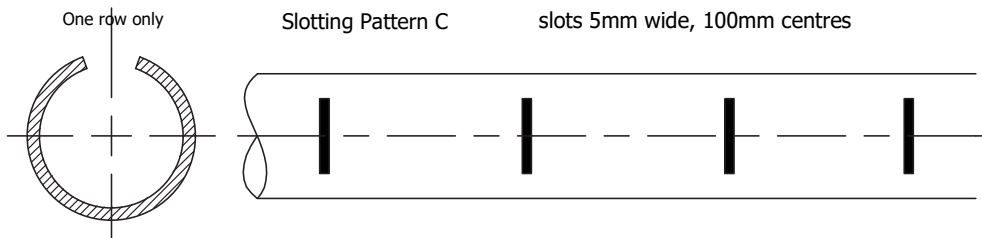
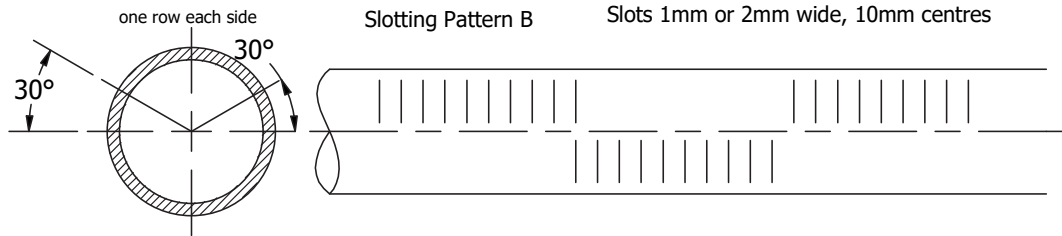
Jacking Pipe for Reline or Slip Line Pipe



Code

JACKING PIPE

Drilling and Slotting patterns



Tolerances

Slotting

- minimum O/D for pattern B is 42mm (32mm DWV)
- minimum O/D for pattern B is 250mm

Drilling

- minimum O/D for drilling is 100mm (can do 42mm (32mm DWV) with special setup)
- minimum O/D for drilling is 355mm

RETENTION AND DETENTION TANKS

Whether you require storage solutions or stormwater retention systems, Solo Plastics offers designs tailored to your needs.



ISO TYPE 5
AS/NZS 5065:2005



Available diameters from 600mm to 3200mm



1-22m long



600-3200mm diameter



Easily connected on-site



Fully recyclable



Lightweight



Totally flexible design: sumps risers, connectors



100-year design life



- Suitable for under lawn installations and for under driveway installations.
- For under driveway tanks we calculate the required wall thickness using EasyPipe software.
- Made to the required volume.
- Outlet flow designed to suit the application and local body requirements e.g. A silt trap as required by the Auckland City Council.
- Calculations are in accordance with AS/NZS 2566.1:1998 – Buried Flexible pipelines: Structural design and installation parameters used are in accordance with AS/NZS 2566.2:2002 – Buried flexible pipelines - Installation



- Available as a Detention, Retention or combo tank system.
- Fully UV stabilised.
- Smooth internally for easy cleaning, ribbed externally for extra strength.
- 600mm access entry with push on inspection cap.
- Inlets, outlets, access, joins and pump locations can be configured in any way that is necessary.
- Anti-Buoyancy design and solution can be provided.

Free delivery for tanks up to 6 meters around Auckland. Delivery for longer tanks is based on an hourly charge. For all information please contact Solo: solo.sales@solo.co.nz

PIPES

TWINWALL PIPES

FARMPPIPE SN6, CIVILPIPE SN8 & SN16

New Zealand made corrugated PE pipe system utilising the latest manufacturing technology.

- **FARMPPIPE SN6** From the FOREST to the FARM, FARMPPIPE is the ideal solution for culverting needs being a New Zealand made twinwall (corrugated) polymer pipe system. Utilising the latest manufacturing technology, FARMPPIPE is made to SN6 stiffness rating under the AS/NZS 5065:2005 standard, ensuring its suitability for culverts. Supplied in 6 metre (approx.) lengths, FARMPPIPE is chemically inert, very light, yet incredibly strong, and able to withstand high loads and severe impacts.

It is specified in DN – which is the ID of the pipe (unlike some alternatives which are denominated by OD suggesting they are up to 36% bigger than they are).

- **CIVILPIPE** is a New Zealand made twinwall (corrugated) polymer pipe system that is ideal for stormwater or wastewater applications. Utilising the latest manufacturing technology, CIVILPIPE is made to either the SN8 or SN16 stiffness ratings under the AS/NZS 5065:2005 standard, ensuring its suitability for road culverts and gravity pipelines. Supplied in 6 metre (approx.) lengths, CIVILPIPE is chemically inert, very light, yet incredibly strong, and able to withstand high loads and severe impacts. It is specified in DN – which is the ID of the pipe (unlike some alternatives which are OD).



FARMPPIPE and **CIVILPIPE** culvert pipes are designed and manufactured to produce **zero toxic** leaching.



RUBBER RINGS

NZ-Made 100yr life rings are available for joining pipes.

FLUMING

Single-wall half-pipe variants are available.

HALF LENGTHS

Are available on request.

DN is the **Nominal Diameter** which for these pipes corresponds exactly to the ID - Internal Diameter – avoiding the possibility of confusion..

SN Rating is the Nominal Stiffness expressed as vertical load in N/m/m. This can be provided to EasyPipe software and can be used to calculate the required SN Rating for any given section. SN Ratings are equal to the concrete class i.e. Class 2 is equal to SN4 and Class 4 is equal to SN16.

The **nominal stiffness ratings** for flexible pipes are typically SN4, SN6, SN8, SN12, and SN16, where the number represents the stiffness in kN/m². For example, **CIVILPIPE SN8** pipe has a nominal stiffness of 8000 N/m², and **CIVILPIPE SN16** has a nominal stiffness of 16000 N/m².

TWINWALL PIPE



FARMPIPE SN6

TW6

Code	DN	ID mm	OD mm	Effective Length mm	Weight
TW6.100.6	100	98	115	6413 mm	4kg
TW6.150.6	150	147	171	6348 mm	6kg
TW6.225.6	225	218	254	6283 mm	14kg
TW6.300.6	300	295	345	6188 mm	22kg
TW6.375.6	375	375	437	6183 mm	40kg
TW6.450.6	450	450	523	6123 mm	61kg
TW6.525.6	525	525	611	6041 mm	70kg
TW6.600.6	600	600	702	5920 mm	90kg
TW6.800.6	800	800	936	5936 mm	161kg
TW6.1000.6	1000	1000	1166	5892 mm	258kg



ISO TYPE 5
AS/NZS 5065:2005



Fully recyclable



100-year design life



Lightweight



CIVILPIPE SN8 & SN16

**TW8
TW16**

Code	DN	ID mm	OD mm	Effective Length mm	Weight
TW8.100.6	100	98	115	6413 mm	5kg
TW8.150.6	150	147	171	6348 mm	8kg
TW8.225.6	225	218	254	6283 mm	17kg
TW8.300.6	300	295	345	6188 mm	28kg
TW8.375.6	375	375	437	6183 mm	45kg
TW8.450.6	450	450	523	6123 mm	70kg
TW8.525.6	525	525	611	6041 mm	95kg
TW8.600.6	600	600	702	5920 mm	115kg
TW8.800.6	800	800	936	5936 mm	195kg
TW8.1000.6	1000	1000	1166	5892 mm	324kg
TW16.225.6	225	218	254	6283 mm	19kg
TW16.300.6	300	295	345	6188 mm	32kg
TW16.375.6	375	375	437	6183 mm	52kg
TW16.450.6	450	450	523	6123 mm	80kg
TW16.525.6	525	525	611	6041 mm	109kg
TW16.600.6	600	600	702	5920 mm	132kg
TW16.800.6	800	800	936	5936 mm	224kg
TW16.1000.6	1000	1000	1166	5892 mm	372kg

Key Benefits

- > Best resistance to abrasion.
- > Superb hydraulic performance.
- > Can be used in any soil conditions with a 100 year life.
- > Easy to cut to length with hand tools.
- > Extremely strong.
- > Less transport costs and install costs.
- > Good chemical stability.
- > Lighter than concrete or PVC.
- > Quick to install – laying in 6m lengths.
- > Accompanied by a full range of fittings.
- > Can be connected to any existing or potential pipe or manhole.
- > Less transport costs and install costs.
- > Completely recyclable.
- > Superb biological resistance.
- > Best seismic resistance.



TWINWALL PIPE | RUBBER RING AND FITTINGS

Coupler

TW1511

Code	Type
TW1511.225HD	TW 225 HD Twin Wall Slip Coupler
TW1511.300HD	TW 300 HD Twin Wall Slip Coupler
TW1511.375HD	TW 375 HD Twin Wall Slip Coupler

Rubber Ring

ZC

Code	Type
ZC.100	ZC 100mm Rubber Ring
ZC.150	ZC 150mm Rubber Ring
ZC.200	ZC 200mm Rubber Ring
ZC.225	ZC 225mm Rubber Ring
ZC.300	ZC 300mm Rubber Ring
ZC.375	ZC 375mm Rubber Ring
ZC.450	ZC 450mm Rubber Ring
ZC.525	ZC 525mm Rubber Ring
ZC.600	ZC 600mm Rubber Ring

Bends

ZC1501H

Code	Type
ZC1501H.225.45	225 UPVC 45DEG Fabricated Bend ZC Corrugated SBE
ZC1501H.225.90	225 UPVC 90DEG Fabricated Bend ZC Corrugated SBE
ZC1501H.300.45	300 UPVC 45DEG Fabricated Bend ZC Corrugated SBE
ZC1501H.300.90	300 UPVC 90DEG Fabricated Bend ZC Corrugated SBE
ZC1501H.375.45	375 UPVC 45DEG Fabricated Bend ZC Corrugated SBE
ZC1501H.375.90	375 UPVC 90DEG Fabricated Bend ZC Corrugated SBE
ZC1501H.450.45	450 UPVC 45DEG Fabricated Bend ZC Corrugated SBE
ZC1501H.450.90	450 UPVC 90DEG Fabricated Bend ZC Corrugated SBE

Junctions

ZC1504H

Code	Type
ZC1504H.225.45	225mm 45 Degree Junction ZC Corrugated SBE
ZC1504H.225.90	225mm 90 Degree Junction ZC Corrugated SBE
ZC1504H.300.45	300mm 45 degree Junction ZC Corrugated SBE
ZC1504H.300.90	300mm 90 Degree Junction ZC corrugated SBE
ZC1504H.375.45	375mm 45 degree Junction ZC Corrugated SBE
ZC1504H.375.90	375mm 90 Degree Junction ZC corrugated SBE
ZC1504H.450.45	450mm 45 degree Junction ZC Corrugated SBE
ZC1504H.450.90	450mm 90 Degree Junction ZC corrugated SBE

Double Couplers

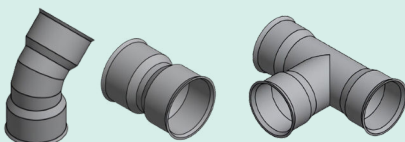
ZC1511
ZC1523

Code	Type
ZC1511.225HD	ZC 225 HD Double Coupler SBE
ZC1511.300HD	ZC 300 HD Double Coupler SBE
ZC1511.375HD	ZC 375 HD Double Coupler SBE
ZC1511.450HD	ZC 450 HD Double Coupler SBE
ZC1523.300.225C	300 225 ZC Concentric Reducer SN16 SBE
ZC1523.375.300C	375 300 ZC Concentric Reducer SN16 SBE
ZC1523.450.375C	450 375 ZC Concentric Reducer SN16 SBE

Manhole Connectors

ZCMC

Code	Type
ZCMC.225	225 ZC Manhole Connector SN16 SLEEVED/FLARED ONE END
ZCMC.300	300 ZC Manhole Connector SN16 SLEEVED/FLARED ONE END
ZCMC.375	375 ZC Manhole Connector SN16 SLEEVED/FLARED ONE END
ZCMC.450	450 ZC Manhole Connector SN16 SLEEVED/FLARED ONE END



FITTINGS

• For Fittings 100-200mm use Fernco products.

Refer to the tables for:

- Couplers
- Rubber Rings
- Bends
- Junctions
- Double Couplers
- Manhole Connectors

TWINWALL PIPE

OUR HDPE CULVERT PIPES CAN BE ADAPTED IN MANY WAYS TO FIT TO EXISTING CONCRETE, PE OR PVC CULVERTS AND EVEN HAVE FLOOD GATES ATTACHED IF REQUIRED.



100 year asset life.
100 year life expectancy.



Smooth Bore.
Smooth interior/bore to increase flow rates.



Connect-ability.
Socket (female) / Spigot (male) push fit connections to quickly connect to other pipes.



Adaptability.
Pipe can be drilled/perforated for drainage and it does not affect its strength.



Save cost and wastage.
Pipes can be manufactured to length to save cost and wastage.

USED FOR:

- Farm culverts
- Access way culverts
- Civil temporary works
- Forestry culverts
- Piping water races or creeks
- Stop bank culverts
- Flumes for surface water management
- Helping with upstream fish passage - through the installation of baffles

Solo Plastics

0800 765 675

Auckland 33 Honan Place, Avondale
Phone 09 828 9594

Christchurch 72 Hayton Road, Wigram
Phone 03 353 9291

solo.sales@solo.co.nz



solo.co.nz