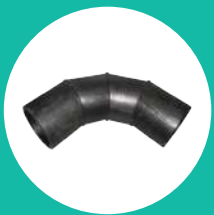




**solo**

Fabricating for a better tomorrow  
*He waka eke noa*

# solo CATALOGUE



**Auckland** 25-33 Honan Place, Avondale  
Phone 09 828 9594  
[solo.sales@solo.co.nz](mailto:solo.sales@solo.co.nz)

**Christchurch** 72 Hayton Road, Wigram  
Phone 03 353 9291  
[solo.saleschch@solo.co.nz](mailto:solo.saleschch@solo.co.nz)

[solo.co.nz](http://solo.co.nz)

V.SEP24



# FABRICATING FOR A BETTER TOMORROW

Solo's Vision is "*Fabricating for a Better Tomorrow*".  
We sustainably manufacture and import infrastructure solutions in PE and PVC for the people of New Zealand, focusing on values that help to conserve and protect our planet whilst always watching over our whānau. Now *that's* standing for better...

[solo.co.nz](http://solo.co.nz)



# OUR VALUES

## Sustainably Designed, Built and Installed Plastic Piping Solutions for the Infrastructure of New Zealand



### Responsible consumption and production our strategies to meet this goal:

- Purchasing and Supply Chain
- Circular Economy Approach
- Supporting Local Community



### Climate Action Our strategies to meet this goal:

- Waste, Pollution and Energy Reduction
- Investment in Clean Energy
- Carbon Offsetting Objectives

## Return Policy

**Solo Plastics Limited will only accept product for return under the following conditions:**

- 1** The return product is a stock item (Please call the office for clarification).
- 2** The return is in saleable condition and supplied within the last 3 months.
- 3** The item(s) is received with our return of goods form giving invoice details.

**Please note a 20% restocking fee will apply for these returned items Non stock items are non returnable.**

The information contained in this document is current as at September 2024 and is based on data available to Solo Plastics Ltd at the time of going to print. All photographic images are intended to provide a general impression only and should not be relied upon as an accurate example of Solo Plastics Ltd products installed in accordance with this document or the referenced compliance documents.

In all instances, the reader should contact Solo Plastics Ltd for clarification that the specific product is appropriate for their circumstance.



CONTENTS





CONTENTS

|   |       |
|---|-------|
| SPECIFICATIONS SUMMARY .....                  | 06-09 |
| DRAIN WASTE AND VENT (DWV) RANGE .....        | 10-27 |
| ELECTRICAL AND TELECOMMUNICATIONS RANGE ..... | 28-33 |
| STORMWATER RANGE .....                        | 34-43 |
| PRESSURE RANGE .....                          | 44-53 |
| BACKING RINGS RANGE .....                     | 54-57 |
| EF FITTINGS RANGE .....                       | 58-63 |
| PE FITTINGS RANGE .....                       | 64-81 |
| MISCELLANEOUS PRODUCTS .....                  | 82-91 |

## SPECIFICATIONS SUMMARY

| Pressure                  |                                |
|---------------------------|--------------------------------|
| <b>1 Pascal</b>           | = 1 newton /metre <sup>2</sup> |
| <b>1 Kilopascal (kPa)</b> | 1 pascal                       |
|                           | = 0.14504 psi                  |
|                           | = 0.336 feet head of water     |
| <b>1 megapascal (MPa)</b> | = 1000 kilopascals             |
|                           | = 10 bar                       |
|                           | = 145 psi                      |
| <b>1 psi</b>              | = 6.89 kilopascals             |
|                           | =0.0068 megapascal             |
|                           | = 0.069 bar                    |
|                           | = 2.3 feet head of water       |
| <b>PN6</b>                | = Class B                      |
|                           | = 60m head                     |
|                           | = 600 kPa                      |
|                           | = 0.6 MPa                      |
|                           | = 131 psi                      |
| <b>PN9</b>                | = 9 bar                        |
|                           | =Class C                       |
|                           | = 90m head                     |
|                           | = 900kPa                       |
|                           | =.09 MPa                       |
| <b>PN12</b>               | = 131 psi                      |
|                           | = 9 bar                        |
|                           | = Class D                      |
|                           | =120m head                     |
|                           | =1200 kPa                      |
| <b>PN15</b>               | = 1.2 MPa                      |
|                           | = 174 psi                      |
|                           | = 12 bar                       |
|                           | = Class E                      |
|                           | = 150m head                    |
| <b>PN15</b>               | = 1500 kPa                     |
|                           | = 1.5 MPa                      |
|                           | = 261 psi                      |
|                           | = 15 bar                       |



SPECIFICATIONS SUMMARY

| Pressure Cont. |             |
|----------------|-------------|
| <b>PN18</b>    | Class F     |
|                | = 180m head |
|                | = 1800 kPa  |
|                | =1.8 MPa    |
|                | =261 psi    |
|                | = 18 bar    |

| Flow                  |                         |
|-----------------------|-------------------------|
| <b>1 litre/second</b> | = 3.6 cubic metres/hour |
|                       | = 13.2 gallons/minute   |
|                       | = 0.0353 cusecs         |
|                       | = 0.086 megalitres/day  |

| Volume                   |                         |
|--------------------------|-------------------------|
| <b>1 litre</b>           | = 1.76 imperial pints   |
|                          | = 0.22 imperial gallons |
|                          | = 0.0353 cubic feet     |
|                          | = 0.001 cubic metres    |
| <b>1 imperial pint</b>   | = 0.5672 litre          |
| <b>1 imperial gallon</b> | =0.00455 cubic metres   |
|                          | = 1.2 US gallons        |
| <b>1 cubic foot</b>      | = 0.02832 cubic metres  |
|                          | = 28.32 litres          |
|                          | = 6.229 gallons         |

| Paper Size PVC Pressure Pipe to AS/NZS 1477:1999 |                   |                   |
|--|-------------------|-------------------|
| Nominal size                                     | Mean O/D Series 1 | Mean O/D Series 2 |
| <b>10</b>  | 17.2              |                   |
| <b>15</b>  | 21.4              |                   |
| <b>20</b>  | 26.8              |                   |
| <b>25</b>  | 33.6              |                   |
| <b>32</b>  | 42.3              |                   |
| <b>40</b>  | 48.3              |                   |
| <b>50</b>  | 60.4              |                   |
| <b>65</b>  | 75.4              |                   |

## SPECIFICATIONS SUMMARY

| <b>Paper Size Cont. PVC Pressure Pipe to AS/NZS 1477:1999</b> |                          |                          |
|---|--------------------------|--------------------------|
| <b>Nominal size</b>   | <b>Mean O/D Series 1</b> | <b>Mean O/D Series 2</b> |
| <b>80</b>   | 88.9                     |                          |
| <b>100</b>  | 114.3                    | 121.9                    |
| <b>125</b>  | 140.2                    |                          |
| <b>150</b>  | 160.3                    |                          |
| <b>175</b>  | 200.3                    |                          |
| <b>200</b>  | 225.3                    | 232.3                    |
| <b>225</b>  | 250.4                    | 259.3                    |
| <b>250</b>  | 280.4                    | 286.2                    |
| <b>300</b>  | 315.4                    | 345.5                    |
| <b>350</b>  | 355.5                    |                          |
| <b>375</b>  | 400.5                    | 426.2                    |
| <b>400</b>  | 450.5                    |                          |

| <b>Paper Size PVC DWV and Stormwater</b> |                     |                            |
|--|---------------------|----------------------------|
| <b>Nominal size</b>                      | <b>DWV Mean O/D</b> | <b>Stormwater Mean O/D</b> |
| <b>32</b>                                | 36.4                |                            |
| <b>40</b>                                | 43.0                |                            |
| <b>50</b>                                | 55.9                |                            |
| <b>65</b>                                | 68.9                |                            |
| <b>75</b>                                |                     | 75.2                       |
| <b>80</b>                                | 82.5                |                            |
| <b>90</b>                                |                     | 90.2                       |
| <b>100</b>                               | 110.2               | 110.2                      |
| <b>150</b>                               | 160.3               | 160.3                      |
| <b>175</b>                               | 200.3               | 200.3                      |
| <b>225</b>                               | 250.4               | 250.4                      |
| <b>250</b>                               |                     | 280.4                      |
| <b>300</b>                               | 315.5               | 315.5                      |
| <b>375</b>                               | 400.5               | 400.5                      |
| <b>475</b>                               | 500.5               | 500.5                      |
| <b>600</b>                               | 630.5               | 630.5                      |



SPECIFICATIONS SUMMARY

| Paper Size Polyethylene Pipe to AS/NZS 4130-2003 |     |       |
|--|-----|-------|
| Nominal size                                     | Min | Max   |
| 110  | 110 | 111   |
| 180  | 180 | 181.7 |

| Pressure Rating   |         |         |
|---|---------|---------|
| This is based on a wall thickness known as SDR (Standard Dimension Ratio). Pressure rating also varies according to the compound used PE80 or PE100 |         |         |
| Nominal working pressure MPa  | PE80    | PE100   |
| PN3.2   | SDR41   |         |
| PN4   | SDR33   | SDR41   |
| PN6.3   | SDR21   | SDR26   |
| PN8   | SDR17   | SDR21   |
| PN10  | SDR13.6 | SDR17   |
| PN12.5  | SDR11   | SDR13.6 |
| PN16  | SDR9    | SDR11   |
| PN20  | SDR7.4  | SDR9    |
| PN25  |         | SDR7.4  |

If a line has a working pressure of PN12, the pipe could be PE 80 SDR11 or PE 100 SDR13.6  
 e.g. For a 180mm dia line with a working pressure of PN12 :  
 PE 80 SDR11 pipe will have a wall thickness of  $180/11 = 16.4\text{mm}$   
 PE 100 SDR 13.6 pipe will have a wall thickness of  $180/13.6 = 13.3\text{mm}$



# DRAIN WASTE & VENT (DWV) RANGE



# DRAIN WASTE AND VENT (DWV) RANGE

## MOULDED FITTINGS

**12-14** Bends | Junctions | Reducers  
Saddles | Couplers | Caps  
Inverts

## SN4/6

**14-19** Fittings - Fabricated Bends  
Swept Bends | Junctions  
Reducers | Saddles | Couplers  
Caps | Inverts

**19** Pipe

## SN16

**19-27** Fittings - Couplers | Bends  
Swept Bends | Junctions  
Manhole

**27** Pipe



## MOULDED

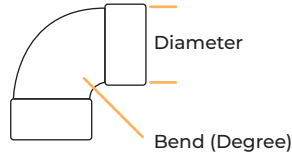
### Code breakdown

Moulded Bend Order Code

101.100.88I

Diameter (mm)

Bend (Degree)



Depending on the type of product, the following illustrations explain what the code numbers mean.



### DWV Moulded SCJ Bend uPVC

101

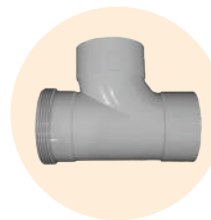
| Code        | Size (mm) | Bend |
|-------------|-----------|------|
| 101.80.45I  | 80        | 45°  |
| 101.80.88I  | 80        | 88°  |
| 101.100.5I  | 100       | 5°   |
| 101.100.11I | 100       | 11°  |
| 101.100.22I | 100       | 22°  |
| 101.100.45I | 100       | 45°  |
| 101.100.88I | 100       | 88°  |
| 101.150.5I  | 150       | 5°   |
| 101.150.30I | 150       | 30°  |
| 101.150.45I | 150       | 45°  |
| 101.150.88I | 150       | 88°  |
| 101.175.45I | 175       | 45°  |
| 101.175.88I | 175       | 88°  |
| 101.225.45I | 225       | 45°  |
| 101.300.45I | 300       | 45°  |
| 101.300.88I | 300       | 88°  |



### DWV Moulded SCJ Junction 45 uPVC

104

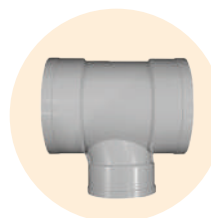
| Code        | Size (mm) | Bend |
|-------------|-----------|------|
| 104.80.45I  | 80        | 45°  |
| 104.100.45I | 100       | 45°  |
| 104.150.45I | 150       | 45°  |
| 104.225.45I | 225       | 45°  |



### DWV Moulded SCJ Junction 90 uPVC

104  
106

| Code        | Size (mm) | Bend |
|-------------|-----------|------|
| 104.80.88I  | 80        | 88°  |
| 104.100.88I | 100       | 88°  |
| 104.150.88I | 150       | 88°  |
| 104.175.88I | 175       | 88°  |
| 106.80.88I  | 80        | 88°  |
| 106.100.88I | 100       | 88°  |

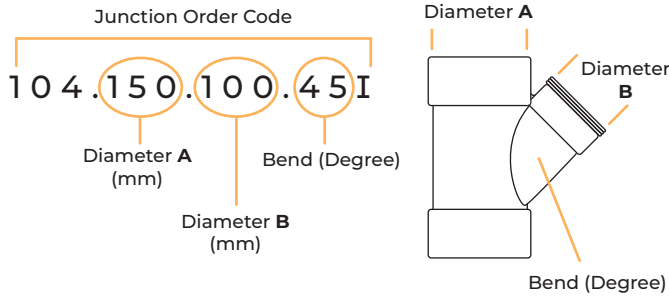


### DWV Moulded SCJ Reducing Junction

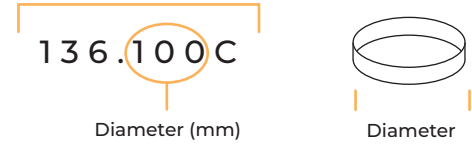
104

| Code            | Size (mm) | Bend |
|-----------------|-----------|------|
| 104.50.40.88I   | 50 . 40   | 88°  |
| 104.150.100.88I | 150 . 100 | 88°  |

## MOULDED



Moulded Threaded Access Cap



### DWV Moulded SCJ Reducing Junction

104

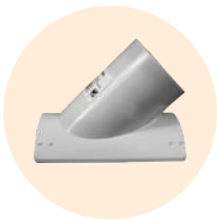
| Code            | Size (mm) | Bend |
|-----------------|-----------|------|
| 104.150.100.45I | 150 . 100 | 45°  |
| 104.225.100.45I | 225 . 100 | 45°  |
| 104.225.150.45I | 225 . 150 | 45°  |
| 104.300.100.45I | 300 . 100 | 45°  |
| 104.300.150.45I | 300 . 150 | 45°  |



### uPVC DWV Moulded Threaded Access Cap

136

| Code     | Size (mm) |
|----------|-----------|
| 136.100C | 100       |
| 136.150C | 150       |
| 136.225C | 225       |



### DWV Moulded SCJ Saddles uPVC

104S

| Code             | Size (mm) | Bend |
|------------------|-----------|------|
| 104S.150.100.45I | 150 . 100 | 45°  |
| 104S.225.100.45I | 225 . 100 | 45°  |
| 104S.225.150.45I | 225 . 150 | 45°  |
| 104S.300.100.45I | 300 . 100 | 45°  |
| 104S.300.150.45I | 300 . 150 | 45°  |



### DWV Moulded SCJ Level Invert uPVC

123

| Code         | Size (mm) | Type               |
|--------------|-----------|--------------------|
| 110.80I      | 100.80    | Concentric Reducer |
| 123.150.100I | 150 . 100 | MF                 |
| 123.225.150I | 225 . 150 | MF                 |
| 123.300.225I | 300 . 225 | MF                 |



### uPVC DWV Moulded Threaded Coupler

110

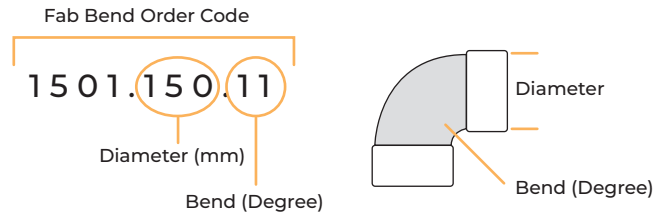
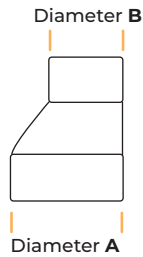
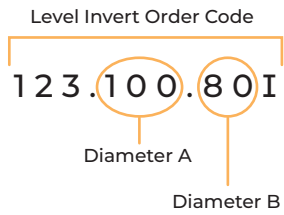
| Code     | Size (mm) |
|----------|-----------|
| 110.80I  | 80        |
| 110.100I | 100       |
| 110.150I | 150       |
| 110.175I | 175       |
| 110.225I | 225       |



### DWV Moulded SCJ Reducing Bush uPVC

124

| Code         | Size (mm) | Type              |
|--------------|-----------|-------------------|
| 124.150.100I | 150 . 100 | Level Invert Bush |



### DWV Moulded Level Invert uPVC

123

| Code                | Size (mm) | Type                   |
|---------------------|-----------|------------------------|
| <b>123.100.80I</b>  | 100 . 80  | Concentric Reducer SCJ |
| <b>123.150.100I</b> | 150 . 100 | Level Invert MF SCJ    |
| <b>123.225.150I</b> | 225 . 150 | Level Invert MF SCJ    |
| <b>123.300.225I</b> | 300 . 225 | Level Invert MF SCJ    |



### DWV SCJ Fabricated Bend SN4 uPVC

1501

| Code               | Size (mm) | Bend |
|--------------------|-----------|------|
| <b>1501.150.11</b> | 150       | 11°  |
| <b>1501.150.22</b> | 150       | 22°  |
| <b>1501.150.45</b> | 150       | 45°  |
| <b>1501.150.88</b> | 150       | 90°  |
| <b>1501.175.11</b> | 175       | 11°  |
| <b>1501.175.22</b> | 175       | 22°  |
| <b>1501.175.45</b> | 175       | 45°  |
| <b>1501.175.88</b> | 175       | 90°  |
| <b>1501.225.11</b> | 225       | 11°  |
| <b>1501.225.22</b> | 225       | 22°  |
| <b>1501.225.45</b> | 225       | 45°  |
| <b>1501.225.88</b> | 225       | 90°  |
| <b>1501.300.11</b> | 300       | 11°  |
| <b>1501.300.22</b> | 300       | 22°  |
| <b>1501.300.45</b> | 300       | 45°  |
| <b>1501.300.88</b> | 300       | 90°  |
| <b>1501.375.11</b> | 375       | 11°  |
| <b>1501.375.22</b> | 375       | 22°  |
| <b>1501.375.45</b> | 375       | 45°  |
| <b>1501.375.88</b> | 375       | 90°  |
| <b>1501.475.11</b> | 475       | 11°  |
| <b>1501.475.22</b> | 475       | 22°  |
| <b>1501.475.45</b> | 475       | 45°  |
| <b>1501.475.88</b> | 475       | 90°  |



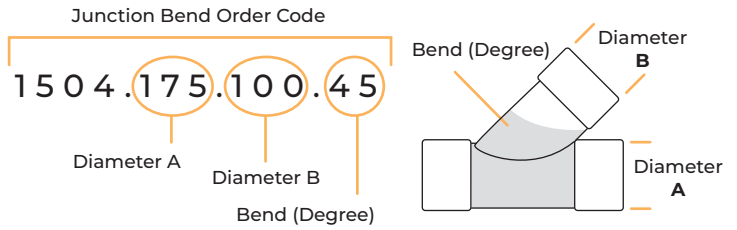
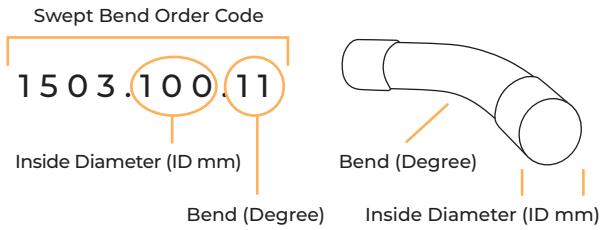
### DWV Moulded End Cap uPVC

137

| Code             | Size (mm) | Type             |
|------------------|-----------|------------------|
| <b>137.32</b>    | 32        | Push on Cap      |
| <b>137.40</b>    | 40        | Push on Cap      |
| <b>137.50</b>    | 50        | Push on Cap      |
| <b>137.65</b>    | 65        | Push on Cap      |
| <b>137.80</b>    | 80        | Push on Cap      |
| <b>137.100I</b>  | 100       | Push on Cap      |
| <b>137.100DC</b> | 100       | Push on Dust Cap |
| <b>137.150I</b>  | 150       | Push on Cap      |
| <b>137.150SP</b> | 150       | Push on Cap Long |
| <b>137.225I</b>  | 225       | Push on Cap      |
| <b>137.300I</b>  | 300       | Push on Cap      |



## SN4/6



### DWV SCJ Swept Bend SN6 uPVC

1503

| Code        | Size (mm) | Bend |
|-------------|-----------|------|
| 1503.100.11 | 100       | 11°  |
| 1503.100.22 | 100       | 22°  |
| 1503.100.45 | 100       | 45°  |
| 1503.100.90 | 100       | 90°  |



### DWV SCJ Junction 45 SN4 uPVC

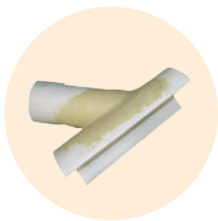
1504

| Code            | Size (mm) | Bend |
|-----------------|-----------|------|
| 1504.175.100.45 | 175 . 100 | 45°  |
| 1504.175.150.45 | 175 . 150 | 45°  |
| 1504.175.45     | 175       | 45°  |
| 1504.225.100.45 | 225 . 100 | 45°  |
| 1504.225.150.45 | 225 . 150 | 45°  |
| 1504.225.175.45 | 225 . 175 | 45°  |
| 1504.225.45     | 225       | 45°  |
| 1504.300.100.45 | 300 . 100 | 45°  |
| 1504.300.150.45 | 300 . 150 | 45°  |
| 1504.300.175.45 | 300 . 175 | 45°  |
| 1504.300.225.45 | 300 . 225 | 45°  |
| 1504.300.45     | 300       | 45°  |
| 1504.375.100.45 | 375 . 100 | 45°  |
| 1504.375.150.45 | 375 . 150 | 45°  |
| 1504.375.175.45 | 375 . 175 | 45°  |
| 1504.375.225.45 | 375 . 225 | 45°  |
| 1504.375.300.45 | 375 . 300 | 45°  |
| 1504.375.45     | 375       | 45°  |

### DWV SCJ Swept Bend SN4 uPVC

1503

| Code        | Size (mm) | Bend |
|-------------|-----------|------|
| 1503.150.11 | 150       | 11°  |
| 1503.150.22 | 150       | 22°  |
| 1503.150.45 | 150       | 45°  |
| 1503.150.90 | 150       | 90°  |



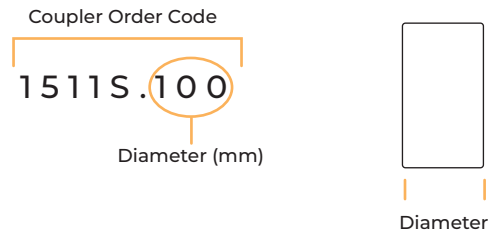
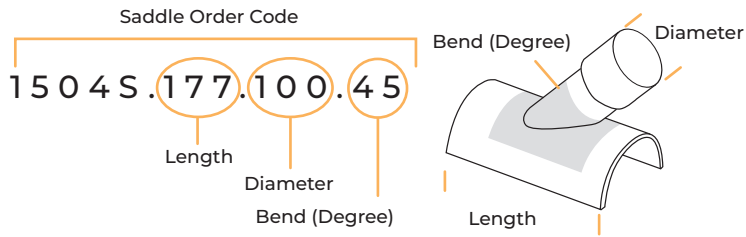
### DWV SCJ Saddle 45 SN4 uPVC

1504S

| Code             | Size (mm) | Bend |
|------------------|-----------|------|
| 1504S.150.100.45 | 150 . 100 | 45°  |
| 1504S.175.100.45 | 175 . 100 | 45°  |
| 1504S.175.150.45 | 175 . 150 | 45°  |
| 1504S.225.100.45 | 225 . 100 | 45°  |
| 1504S.225.150.45 | 225 . 150 | 45°  |
| 1504S.225.175.45 | 225 . 175 | 45°  |
| 1504S.300.100.45 | 300 . 100 | 45°  |
| 1504S.300.150.45 | 300 . 150 | 45°  |
| 1504S.300.175.45 | 300 . 175 | 45°  |
| 1504S.375.100.45 | 375 . 100 | 45°  |
| 1504S.375.150.45 | 375 . 150 | 45°  |
| 1504S.375.175.45 | 375 . 175 | 45°  |
| 1504S.475.100.45 | 475 . 100 | 45°  |

# DWV (Drain Waste and Vent)

## SN4/6



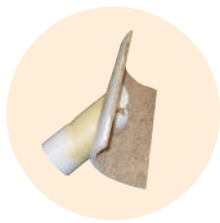
### DWV SCJ Saddle 45 Fibrolite uPVC 1504S

| Code             | Size (mm) | Bend |
|------------------|-----------|------|
| 1504S.177.100.45 | 150 . 100 | 45°  |
| 1504S.226.100.45 | 200 . 100 | 45°  |
| 1504S.253.100.45 | 225 . 100 | 45°  |
| 1504S.279.100.45 | 250 . 100 | 45°  |
| 1504S.333.100.45 | 300 . 100 | 45°  |
| 1504S.415.100.45 | 375 . 100 | 45°  |
| 1504S.492.100.45 | 450 . 100 | 45°  |
| 1504S.572.100.45 | 525 . 100 | 45°  |



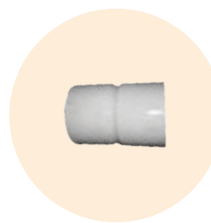
### DWV SCJ Slip Glued Slip Coupler SN4 uPVC 1511S

| Code      | Size (mm) |
|-----------|-----------|
| 1511S.100 | 100       |
| 1511S.150 | 150       |
| 1511S.175 | 175       |
| 1511S.225 | 225       |
| 1511S.300 | 300       |
| 1511S.375 | 375       |



### DWV SCJ Saddle 45 Concrete uPVC 1504S

| Code             | Size (mm) | Bend |
|------------------|-----------|------|
| 1504S.287.100.45 | 225 . 100 | 45°  |
| 1504S.363.100.45 | 300 . 100 | 45°  |
| 1504S.445.100.45 | 375 . 100 | 45°  |
| 1504S.533.100.45 | 450 . 100 | 45°  |



### DWV SCJ Double Coupler SN4 1511

| Code     | Size (mm) |
|----------|-----------|
| 1511.150 | 150       |
| 1511.175 | 175       |
| 1511.225 | 225       |
| 1511.300 | 300       |
| 1511.375 | 375       |



### Saddle Straps SS

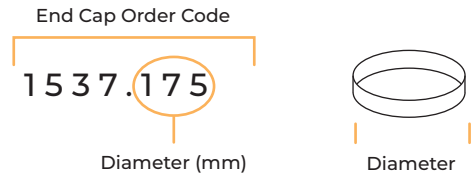
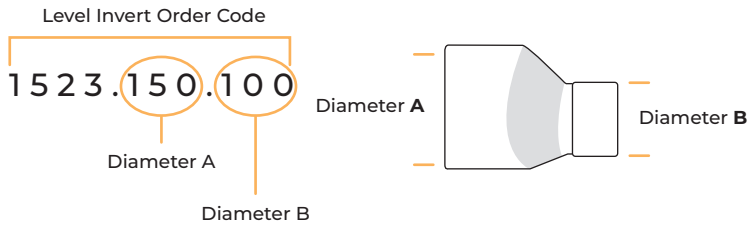
| Code | Size           | Range       |
|------|----------------|-------------|
| SS1  | Size 1 S/S 316 | 175 - 216mm |
| SS2  | Size 2 S/S 316 | 181 - 225mm |
| SS3  | Size 3 S/S 316 | 225 - 333mm |
| SS4  | Size 4 S/S 316 | 336 - 415mm |
| SS5  | Size 5 S/S 316 | 445 - 572mm |



### DWV Adapters for Concrete Slab 178

| Code    | Size (mm) | Type |
|---------|-----------|------|
| 178.65  | 65        | DWV  |
| 178.80  | 80        | DWV  |
| 178.100 | 100       | SN6  |
| 178.150 | 150       | SN4  |
| 178.175 | 175       | SN4  |
| 178.225 | 225       | SN4  |
| 178.300 | 300       | SN6  |

## SN4/6



### DWV Level Invert uPVC

1523

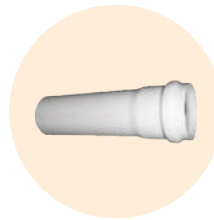
| Code         | Size (mm) | Application |
|--------------|-----------|-------------|
| 1523.150.100 | 150 . 100 | Stormwater  |
| 1523.175.100 | 175 . 100 | DWV SCJ     |
| 1523.175.150 | 175 . 150 | Stormwater  |
| 1523.225.100 | 225 . 100 | DWV SCJ     |
| 1523.225.150 | 225 . 150 | DWV SCJ     |
| 1523.225.175 | 225 . 175 | Stormwater  |
| 1523.300.100 | 300 . 100 | DWV SCJ     |
| 1523.300.150 | 300 . 150 | DWV SCJ     |
| 1523.300.175 | 300 . 175 | DWV SCJ     |
| 1523.300.225 | 300 . 225 | Stormwater  |
| 1523.375.100 | 375 . 100 | DWV SCJ     |
| 1523.375.150 | 375 . 150 | DWV SCJ     |
| 523.375.175  | 375 . 175 | DWV SCJ     |
| 1523.375.225 | 375 . 225 | DWV SCJ     |
| 1523.375.300 | 375 . 300 | DWV SCJ     |



### DWV/Stormwater End Cap SCJ uPVC

1537

| Code     | Size (mm) |
|----------|-----------|
| 1537.175 | 175       |
| 1537.225 | 225       |
| 1537.300 | 300       |
| 1537.375 | 375       |



### DWV RRJ Manhole Short SN4 UG

Z1500

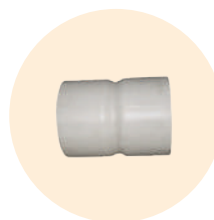
| Code          | Size (mm) | Length |
|---------------|-----------|--------|
| Z1500.100.1   | 100       | 1m     |
| Z1500.100.600 | 100       | 0.6m   |
| Z1500.150.1   | 150       | 1m     |
| Z1500.150.600 | 150       | 0.6m   |
| Z1500.175.1   | 175       | 1m     |
| Z1500.175.600 | 175       | 0.6m   |
| Z1500.225.1   | 225       | 1m     |
| Z1500.225.600 | 225       | 0.6m   |
| Z1500.300.1   | 300       | 1m     |
| Z1500.300.600 | 300       | 0.6m   |
| Z1500.375.1   | 375       | 1m     |
| Z1500.375.600 | 375       | 0.6m   |



### DWV Adapters

1524

| Code                                      | Size (mm) |
|---|-----------|
| 1524.114.100                              | 114 . 110 |
| Double Coupler for Pressure/ Sewer SCJ    |           |
| 1524.150SS                                | 150       |
| Adapter Boot and SS 316 Straps for AC-PVC |           |

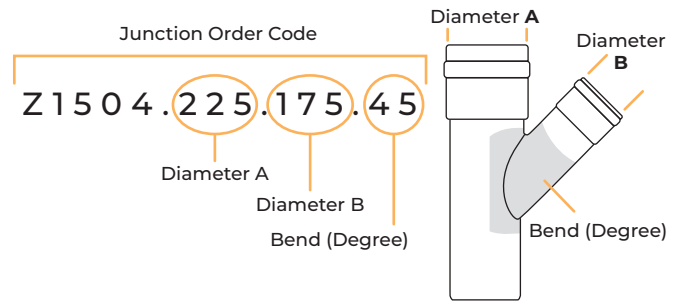
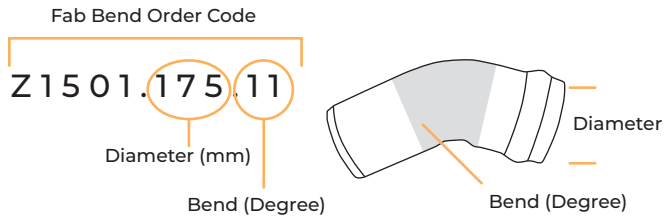


### DWV RRJ DBL Coupler SN4

Z1511

| Code      | Size (mm) |
|-----------|-----------|
| Z1511.175 | 175       |
| Z1511.225 | 225       |
| Z1511.300 | 300       |

## SN4/6



### DWV RRJ Fab Bend SN4

Z1501

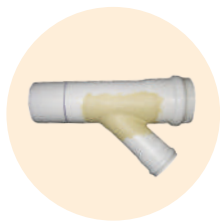
| Code         | Size (mm) | Bend |
|--------------|-----------|------|
| Z1501.175.11 | 175       | 11°  |
| Z1501.175.22 | 175       | 22°  |
| Z1501.175.45 | 175       | 45°  |
| Z1501.175.90 | 175       | 90°  |
| Z1501.225.11 | 225       | 11°  |
| Z1501.225.22 | 225       | 22°  |
| Z1501.225.45 | 225       | 45°  |
| Z1501.225.90 | 225       | 90°  |
| Z1501.300.11 | 300       | 11°  |
| Z1501.300.22 | 300       | 22°  |
| Z1501.300.45 | 300       | 45°  |
| Z1501.300.90 | 300       | 90°  |
| Z1501.375.11 | 375       | 11°  |
| Z1501.375.22 | 375       | 22°  |
| Z1501.375.45 | 375       | 45°  |
| Z1501.375.90 | 375       | 90°  |



### DWV RRJ Junction 45 SN4 *continues*

Z1501

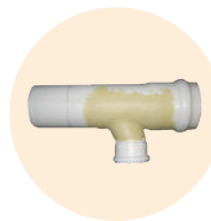
| Code             | Size (mm) | Bend |
|------------------|-----------|------|
| Z1504.225.175.45 | 225 . 175 | 45°  |
| Z1504.225.45     | 225       | 45°  |
| Z1504.300.100.45 | 300 . 100 | 45°  |
| Z1504.300.150.45 | 300 . 150 | 45°  |
| Z1504.300.175.45 | 300 . 175 | 45°  |
| Z1504.300.225.45 | 300 . 225 | 45°  |
| Z1504.300.45     | 300       | 45°  |
| Z1504.375.150.45 | 375 . 150 | 45°  |
| Z1504.375.175.45 | 375 . 175 | 45°  |
| Z1504.375.225.45 | 375 . 225 | 45°  |
| Z1504.375.300.45 | 375 . 300 | 45°  |
| Z1504.375.45     | 375       | 45°  |



### DWV RRJ Junction 45 SN4

Z1501

| Code             | Size (mm) | Bend |
|------------------|-----------|------|
| Z1504.175.100.45 | 175 . 100 | 45°  |
| Z1504.175.150.45 | 175 . 150 | 45°  |
| Z1504.175.45     | 175       | 45°  |
| Z1504.225.100.45 | 225 . 100 | 45°  |
| Z1504.225.150.45 | 225 . 150 | 45°  |



### DWV RRJ Lunden SN4

Z1504

| Code           | Size (mm) |
|----------------|-----------|
| Z1504.175.100L | 175 . 100 |
| Z1504.175.150L | 175 . 150 |
| Z1504.175L     | 175       |
| Z1504.225.100L | 225 . 100 |
| Z1504.225.150L | 225 . 150 |
| Z1504.225.175L | 225 . 175 |
| Z1504.225L     | 225       |
| Z1504.300.100L | 300 . 100 |
| Z1504.300.150L | 300 . 150 |

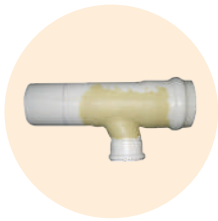
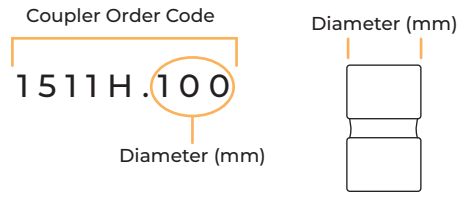
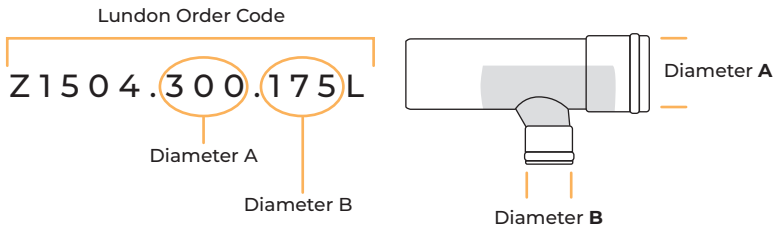
Continue to the next column.

Continue to the next column.



## SN4/6

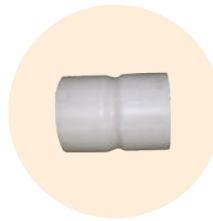
## SN16



### DWV RRJ Lundon SN4 *continues*

Z1504

| Code           | Size (mm) |
|----------------|-----------|
| Z1504.300.175L | 300 . 175 |
| Z1504.300.225L | 300 . 225 |
| Z1504.300L     | 300       |
| Z1504.375.150L | 375 . 150 |
| Z1504.375.175L | 375 . 175 |
| Z1504.375.225L | 375 . 225 |
| Z1504.375.300L | 375 . 300 |
| Z1504.375L     | 375       |



### SN16 DWV DBL Coupler SN16 uPVC

1511H

| Code      | Size (mm) |
|-----------|-----------|
| 1511H.100 | 100       |
| 1511H.150 | 150       |
| 1511H.175 | 175       |
| 1511H.225 | 225       |
| 1511H.300 | 300       |



### Pipe DWV uPVC

100

| Code         |         | Size (mm) |
|--------------|---------|-----------|
| 100.32.6     | SCJ     | 32        |
| 100.40.6     | SCJ     | 40        |
| 100.50.6     | SCJ     | 50        |
| 100.65.6     | SCJ     | 65        |
| 100.80.6     | SCJ     | 80        |
| 100SN6.100.6 | SN6 SCJ | 100       |



### SN16 DWV O Ring Slip Coupler

S1511

| Code        | Size (mm) |
|-------------|-----------|
| S1511.175HD | 175       |
| S1511.225HD | 225       |
| S1511.300HD | 300       |

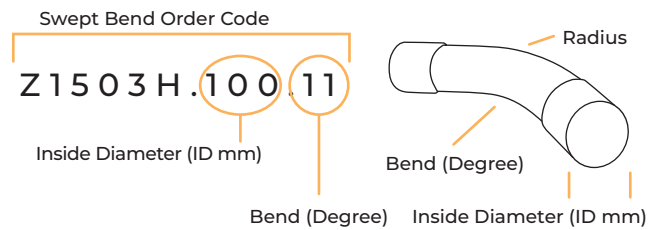
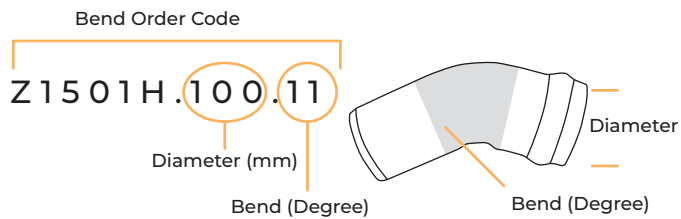


### SN16 DWV RRJ DBL Coupler

Z1511

| Code        | Size (mm) |
|-------------|-----------|
| Z1511.100HD | 100       |
| Z1511.150HD | 150       |
| Z1511.175HD | 175       |
| Z1511.225HD | 225       |
| Z1511.300HD | 300       |

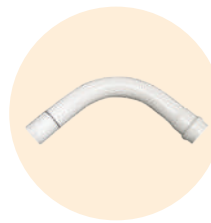
## SN16



### SN16 DWV RRJ Bend

Z1501

| Code          | Size (mm) | Bend |
|---------------|-----------|------|
| Z1501H.100.11 | 100       | 11°  |
| Z1501H.100.22 | 100       | 22°  |
| Z1501H.100.45 | 100       | 45°  |
| Z1501H.100.90 | 100       | 90°  |
| Z1501H.150.11 | 150       | 11°  |
| Z1501H.150.22 | 150       | 22°  |
| Z1501H.150.45 | 150       | 45°  |
| Z1501H.150.90 | 150       | 90°  |
| Z1501H.175.11 | 175       | 11°  |
| Z1501H.175.22 | 175       | 22°  |
| Z1501H.175.45 | 175       | 45°  |
| Z1501H.175.90 | 175       | 90°  |
| Z1501H.225.11 | 225       | 11°  |
| Z1501H.225.22 | 225       | 22°  |
| Z1501H.225.45 | 225       | 45°  |
| Z1501H.225.90 | 225       | 90°  |
| Z1501H.300.11 | 300       | 11°  |
| Z1501H.300.22 | 300       | 22°  |
| Z1501H.300.45 | 300       | 45°  |
| Z1501H.300.90 | 300       | 90°  |
| Z1501H.375.45 | 375       | 45°  |
| Z1501H.375.90 | 375       | 90°  |



### SN16 DWV RRJ Formed Swept Bend

Z1503

| Code               | Size (mm) | Bend |
|--------------------|-----------|------|
| Z1503H.100.11      | 100       | 11°  |
| Z1503H.100.22      | 100       | 22°  |
| Z1503H.100.45      | 100       | 45°  |
| Z1503H.100.90      | 100       | 90°  |
| Z1503H.150.11      | 150       | 11°  |
| Z1503H.150.11R720  | 150       | 11°  |
| Z1503H.150.22      | 150       | 22°  |
| Z1503H.150.22R720  | 150       | 22°  |
| Z1503H.150.45      | 150       | 45°  |
| Z1503H.150.45R1280 | 150       | 45°  |
| Z1503H.150.90      | 150       | 90°  |
| Z1503H.150.90R1920 | 150       | 90°  |
| Z1503H.175.11      | 175       | 11°  |
| Z1503H.175.22      | 175       | 22°  |
| Z1503H.175.45      | 175       | 45°  |
| Z1503H.175.90      | 175       | 90°  |



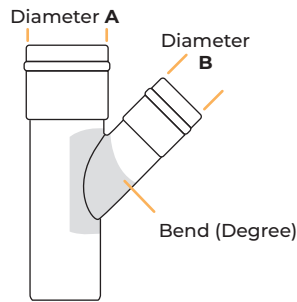
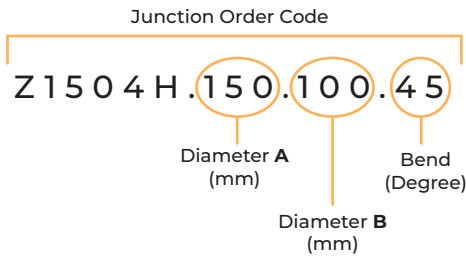
### SN16 DWV RRJ Junction 45

Z1504

| Code              | Size (mm) | Bend |
|-------------------|-----------|------|
| Z1504H.100.45     | 100       | 45°  |
| Z1504H.150.100.45 | 150 . 100 | 45°  |
| Z1504H.150.45     | 150       | 45°  |
| Z1504H.175.100.45 | 175 . 100 | 45°  |
| Z1504H.175.150.45 | 175 . 150 | 45°  |
| Z1504H.175.45     | 175       | 45°  |
| Z1504H.225.100.45 | 225 . 100 | 45°  |
| Z1504H.225.150.45 | 225 . 150 | 45°  |
| Z1504H.225.175.45 | 225 . 175 | 45°  |

Continue to the next column.

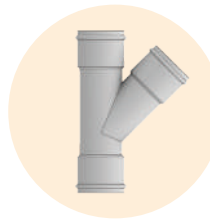
## SN16



### SN16 DWV RRJ Junction 45 *continues*

Z1504

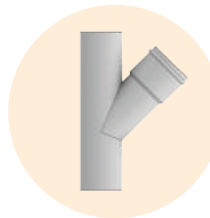
| Code              | Size (mm) | Bend |
|-------------------|-----------|------|
| Z1504H.225.45     | 225       | 45°  |
| Z1504H.300.100.45 | 300 . 100 | 45°  |
| Z1504H.300.150.45 | 300 . 150 | 45°  |
| Z1504H.300.175.45 | 300 . 175 | 45°  |
| Z1504H.300.225.45 | 300 . 225 | 45°  |
| Z1504H.300.45     | 300       | 45°  |
| Z1504H.375.100.45 | 375 . 100 | 45°  |
| Z1504H.375.150.45 | 375 . 150 | 45°  |
| Z1504H.375.175.45 | 375 . 175 | 45°  |
| Z1504H.375.225.45 | 375 . 225 | 45°  |
| Z1504H.375.300.45 | 375 . 300 | 45°  |
| Z1504H.375.45     | 375       | 45°  |



### SN16 DWV RRJ Junction 45 Z Both *continues*

1504

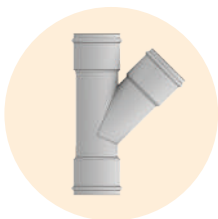
| Code              | Size (mm) | Bend |
|-------------------|-----------|------|
| 1504H.300.225.45Z | 300 . 225 | 45°  |
| 1504H.300.45Z     | 300       | 45°  |
| 1504H.375.100.45Z | 375 . 100 | 45°  |
| 1504H.375.150.45Z | 375 . 150 | 45°  |
| 1504H.375.175.45Z | 375 . 175 | 45°  |
| 1504H.375.225.45Z | 375 . 225 | 45°  |
| 1504H.375.45Z     | 375       | 45°  |



### SN16 DWV RRJ Junction 45 Spigot Both Ends

1504

| Code              | Size (mm) | Bend |
|-------------------|-----------|------|
| 1504H.100.45S     | 100       | 45°  |
| 1504H.150.100.45S | 150 . 100 | 45°  |
| 1504H.150.45S     | 150       | 45°  |
| 1504H.175.100.45S | 175 . 100 | 45°  |
| 1504H.175.150.45S | 175 . 150 | 45°  |
| 1504H.175.45S     | 175       | 45°  |
| 1504H.225.100.45S | 225 . 100 | 45°  |
| 1504H.225.150.45S | 225 . 150 | 45°  |
| 1504H.225.45S     | 225       | 45°  |
| 1504H.300.100.45S | 300 . 100 | 45°  |
| 1504H.300.150.45S | 300 . 150 | 45°  |
| 1504H.300.225.45S | 300 . 225 | 45°  |
| 1504H.300.45S     | 300       | 45°  |
| 1504H.375.100.45S | 375 . 100 | 45°  |
| 1504H.375.150.45S | 375 . 150 | 45°  |
| 1504H.375.225.45S | 375 . 225 | 45°  |
| 1504H.375.45S     | 375       | 45°  |



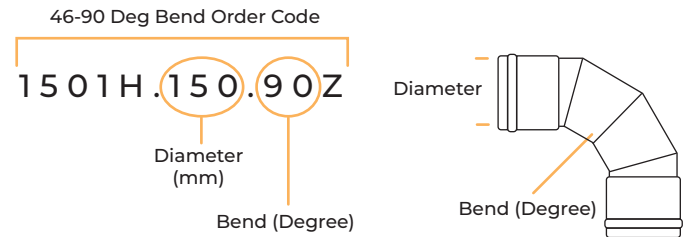
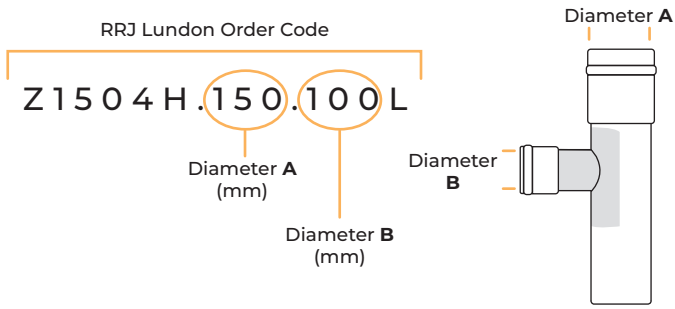
### SN16 DWV RRJ Junction 45 Z Both Ends

1504

| Code              | Size (mm) | Bend |
|-------------------|-----------|------|
| 1504H.100.45Z     | 100       | 45°  |
| 1504H.150.100.45Z | 150 . 100 | 45°  |
| 1504H.150.45Z     | 150       | 45°  |
| 1504H.175.100.45Z | 175 . 100 | 45°  |
| 1504H.175.150.45Z | 175 . 150 | 45°  |
| 1504H.175.45Z     | 175       | 45°  |
| 1504H.225.100.45Z | 225 . 100 | 45°  |
| 1504H.225.150.45Z | 225 . 150 | 45°  |
| 1504H.225.175.45Z | 225 . 175 | 45°  |
| 1504H.225.45Z     | 225       | 45°  |
| 1504H.300.100.45Z | 300 . 100 | 45°  |
| 1504H.300.150.45Z | 300 . 150 | 45°  |
| 1504H.300.175.45Z | 300 . 175 | 45°  |

Continue to the next column.

## SN16



### SN16 DWV RRJ Lunden

1504

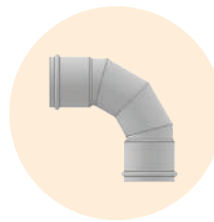
| Code            | Size (mm) |
|-----------------|-----------|
| Z1504H.100L     | 100       |
| Z1504H.150.100L | 150 . 100 |
| Z1504H.150L     | 150       |
| Z1504H.175.100L | 175 . 100 |
| Z1504H.175.150L | 175 . 150 |
| Z1504H.175L     | 175       |
| Z1504H.225.100L | 225 . 100 |
| Z1504H.225.150L | 225 . 150 |
| Z1504H.225.175L | 225 . 175 |
| Z1504H.225L     | 225       |
| Z1504H.300.100L | 300 . 100 |
| Z1504H.300.150L | 300 . 150 |
| Z1504H.300.175L | 300 . 175 |
| Z1504H.300.225L | 375 . 225 |
| Z1504H.300L     | 300       |



### 0-45 Deg Bend SN16 RRJ RRJ

1501

| Code          | Size (mm) | Bend |
|---------------|-----------|------|
| 1501H.150.45Z | 150       | 45°  |
| 1501H.175.45Z | 175       | 45°  |
| 1501H.225.45Z | 225       | 45°  |
| 1501H.300.45Z | 300       | 45°  |
| 1501H.375.45Z | 375       | 45°  |



### 46-90 Deg Bend SN16 RRJ RRJ

1501

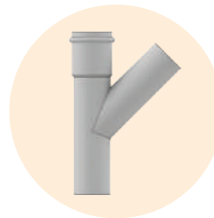
| Code          | Size (mm) | Bend |
|---------------|-----------|------|
| 1501H.150.90Z | 150       | 90°  |
| 1501H.175.90Z | 175       | 90°  |
| 1501H.225.90Z | 225       | 90°  |
| 1501H.300.90Z | 300       | 90°  |
| 1501H.375.90Z | 375       | 90°  |



### SN16 RRJ Lunden Spigot Both Ends

1504

| Code            | Size (mm) |
|-----------------|-----------|
| 1504H.150.100LS | 150 . 100 |
| 1504H.150LS     | 150       |
| 1504H.225.100LS | 225 . 100 |
| 1504H.225.150LS | 225 . 150 |
| 1504H.225LS     | 225       |
| 1504H.300.150LS | 300 . 150 |
| 1504H.375.100LS | 375 . 100 |
| 1504H.375.150LS | 375 . 150 |
| 1504H.375LS     | 375       |



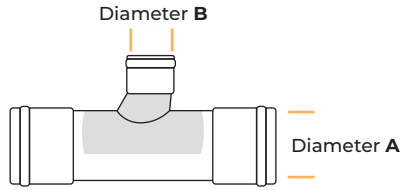
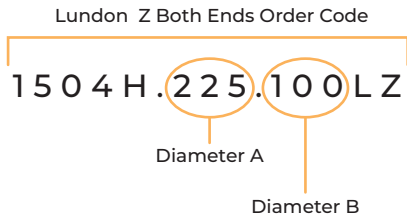
### Junction RRJ SP SP

1501

| Code            | Size (mm) | Bend |
|-----------------|-----------|------|
| Z1504H.150.45SP | 150       | 45°  |
| Z1504H.175.45SP | 175       | 45°  |
| Z1504H.225.45SP | 225       | 45°  |
| Z1504H.300.45SP | 300       | 45°  |
| Z1504H.375.45SP | 375       | 45°  |



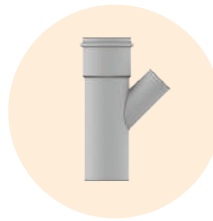
## SN16



### SN16 RRJ Lundon Z Both Ends

1504

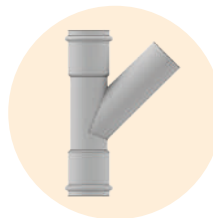
| Code            | Size (mm) |
|-----------------|-----------|
| 1504H.100LZ     | 100       |
| 1504H.150.100LZ | 150 . 100 |
| 1504H.150LZ     | 150       |
| 1504H.175.100LZ | 175 . 100 |
| 1504H.175.150LZ | 175 . 150 |
| 1504H.175LZ     | 175       |
| 1504H.225.100LZ | 225 . 100 |
| 1504H.225.150LZ | 225 . 150 |
| 1504H.225.175LZ | 225 . 175 |
| 1504H.225LZ     | 225       |
| 1504H.300.100LZ | 300 . 100 |
| 1504H.300.150LZ | 300 . 150 |
| 1504H.300.175LZ | 300 . 175 |
| 1504H.300.225LZ | 300 . 225 |
| 1504H.300LZ     | 300       |
| 1504H.375.100LZ | 375 . 100 |
| 1504H.375.150LZ | 375 . 150 |
| 1504H.375.175LZ | 375 . 175 |
| 1504H.375.225LZ | 375 . 225 |
| 1504H.375LZ     | 375       |



### SN16 Reducing Junction 45 RRJ SP SP

Z1504

| Code                | Size (mm) | Bend |
|---------------------|-----------|------|
| Z1504H.150.100.45SP | 150 . 100 | 45°  |
| Z1504H.175.100.45SP | 175 . 100 | 45°  |
| Z1504H.175.150.45SP | 175 . 150 | 45°  |
| Z1504H.225.100.45SP | 225 . 100 | 45°  |
| Z1504H.225.150.45SP | 225 . 150 | 45°  |
| Z1504H.225.175.45SP | 225 . 175 | 45°  |
| Z1504H.300.100.45SP | 300 . 100 | 45°  |
| Z1504H.300.150.45SP | 300 . 150 | 45°  |
| Z1504H.300.175.45SP | 300 . 175 | 45°  |
| Z1504H.300.225.45SP | 300 . 225 | 45°  |
| Z1504H.375.100.45SP | 375 . 100 | 45°  |
| Z1504H.375.150.45SP | 375 . 150 | 45°  |
| Z1504H.375.175.45SP | 375 . 175 | 45°  |
| Z1504H.375.225.45SP | 375 . 225 | 45°  |
| Z1504H.375.300.45SP | 375 . 300 | 45°  |

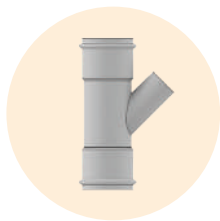
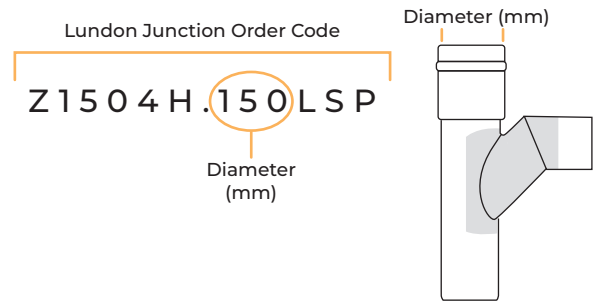
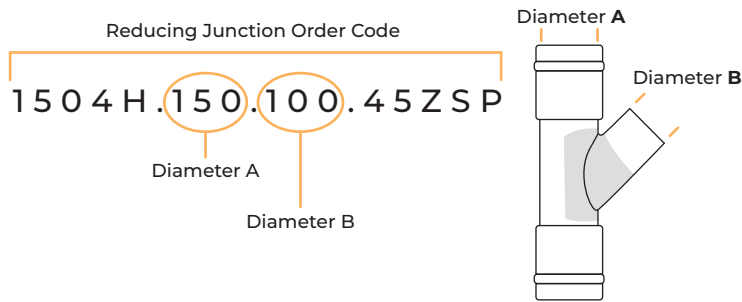


### SN16 Junction 45 RRJ RRJ SP

1504H

| Code            | Size (mm) | Bend |
|-----------------|-----------|------|
| 1504H.150.45ZSP | 150       | 45°  |
| 1504H.175.45ZSP | 175       | 45°  |
| 1504H.225.45ZSP | 225       | 45°  |
| 1504H.300.45ZSP | 300       | 45°  |
| 1504H.375.45ZSP | 375       | 45°  |

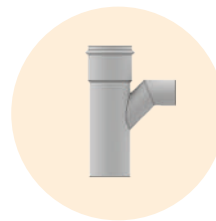
## SN16



### SN16 Reducing Junction 45 RRJ RRJ SP

1504H

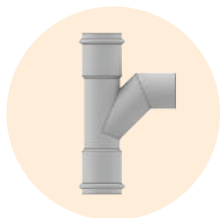
| Code                | Size (mm) | Bend |
|---------------------|-----------|------|
| 1504H.150.100.45ZSP | 150 . 100 | 45°  |
| 1504H.175.100.45ZSP | 175 . 150 | 45°  |
| 1504H.175.150.45ZSP | 175 . 150 | 45°  |
| 1504H.175.150.45ZSP | 175 . 150 | 45°  |
| 1504H.225.150.45ZSP | 225 . 150 | 45°  |
| 1504H.225.175.45ZSP | 200 . 175 | 45°  |
| 1504H.300.100.45ZSP | 300 . 100 | 45°  |
| 1504H.300.150.45ZSP | 300 . 150 | 45°  |
| 1504H.300.175.45ZSP | 300 . 175 | 45°  |
| 1504H.300.225.45ZSP | 300 . 225 | 45°  |
| 1504H.375.100.45ZSP | 375 . 100 | 45°  |
| 1504H.375.150.45ZSP | 375 . 150 | 45°  |
| 1504H.375.175.45ZSP | 375 . 175 | 45°  |
| 1504H.375.225.45ZSP | 375 . 225 | 45°  |
| 1504H.375.300.45ZSP | 375 . 300 | 45°  |



### SN16 Reducing Lundon RRJ SP SP

Z1504

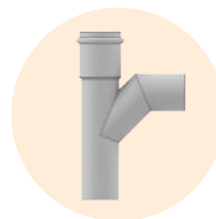
| Code              | Size (mm) |
|-------------------|-----------|
| Z1504H.150.100LSP | 150 . 100 |
| Z1504H.175.100LSP | 175 . 100 |
| Z1504H.175.150LSP | 175 . 150 |
| Z1504H.225.100LSP | 225 . 100 |
| Z1504H.225.150LSP | 225 . 150 |
| Z1504H.225.175LSP | 225 . 175 |
| Z1504H.300.100LSP | 300 . 100 |
| Z1504H.300.150LSP | 300 . 150 |
| Z1504H.300.175LSP | 300 . 175 |
| Z1504H.300.225LSP | 300 . 225 |
| Z1504H.375.100LSP | 375 . 100 |
| Z1504H.375.150LSP | 375 . 150 |
| Z1504H.375.175LSP | 375 . 175 |
| Z1504H.375.225LSP | 375 . 225 |
| Z1504H.375.300LSP | 375 . 300 |



### SN16 Lundon Junction RRJ RRJ SP

1504H

| Code          | Size (mm) |
|---------------|-----------|
| 1504H.150LZSP | 150       |
| 1504H.175LZSP | 175       |
| 1504H.225LZSP | 225       |
| 1504H.300LZSP | 300       |
| 1504H.375LZSP | 375       |

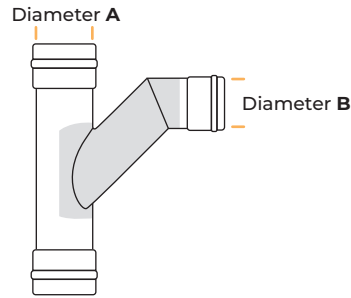
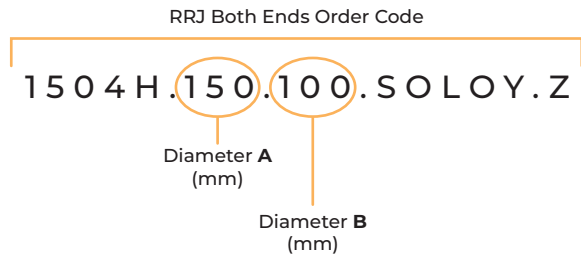


### SN16 Lundon Junction RRJ SP SP

Z1504

| Code          | Size (mm) |
|---------------|-----------|
| Z1504H.150LSP | 150       |
| Z1504H.175LSP | 175       |
| Z1504H.225LSP | 225       |
| Z1504H.300LSP | 300       |
| Z1504H.375LSP | 375       |

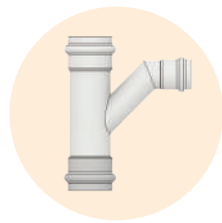
## SN16



### SN16 Reducing Lundon Junction RRJ RRJ SP

1504H

| Code              | Size (mm) |
|-------------------|-----------|
| 1504H.150.100LZSP | 150 . 100 |
| 1504H.175.100LZSP | 175 . 100 |
| 1504H.175.150LZSP | 175 . 150 |
| 1504H.225.100LZSP | 225 . 100 |
| 1504H.225.150LZSP | 225 . 150 |
| 1504H.225.150LZSP | 225 . 150 |
| 1504H.225.175LZSP | 225 . 175 |
| 1504H.300.100LZSP | 300 . 100 |
| 1504H.300.150LZSP | 300 . 150 |
| 1504H.300.175LZSP | 300 . 175 |
| 1504H.300.225LZSP | 300 . 225 |
| 1504H.375.100LZSP | 375 . 100 |
| 1504H.375.150LZSP | 375 . 150 |
| 1504H.375.175LZSP | 375 . 175 |
| 1504H.375.225LZSP | 375 . 225 |
| 1504H.375.300LZSP | 375 . 300 |



### SN16 DWV RRJ Both Ends Solo Watercare Wye uPVC *continues*

1504

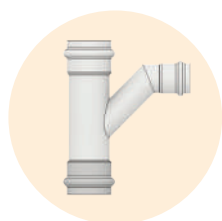
| Code                  | Size (mm) |
|-----------------------|-----------|
| 1504H.225.150.SOLOY.Z | 225 . 150 |
| 1504H.225.SOLOY.Z     | 225       |
| 1504H.300.100.SOLOY.Z | 300 . 100 |
| 1504H.375.100.SOLOY.Z | 375 . 100 |
| 1504H.375.150.SOLOY.Z | 375 . 150 |
| 1504H.300.225.SOLOY.Z | 300 . 225 |



### SN16 DWV RRJ Solo Watercare Wye uPVC

1504

| Code                 | Size (mm) |
|----------------------|-----------|
| Z1504H.100.SOLOY     | 100       |
| Z1504H.150.SOLOY     | 150       |
| Z1504H.150.100.SOLOY | 150 . 100 |
| Z1504H.175.SOLOY     | 175       |
| Z1504H.175.100.SOLOY | 175 . 100 |
| Z1504H.175.150.SOLOY | 175 . 150 |
| Z1504H.225.SOLOY     | 225       |
| Z1504H.225.100.SOLOY | 225 . 100 |
| Z1504H.225.150.SOLOY | 225 . 150 |
| Z1504H.225.175.SOLOY | 225 . 175 |
| Z1504H.300.SOLOY     | 300       |
| Z1504H.300.100.SOLOY | 300 . 100 |
| Z1504H.300.150.SOLOY | 300 . 150 |
| Z1504H.300.175.SOLOY | 300 . 175 |
| Z1504H.300.225.SOLOY | 300 . 225 |



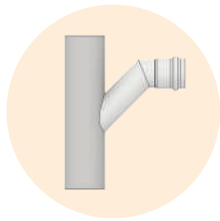
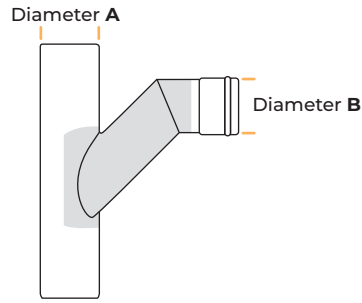
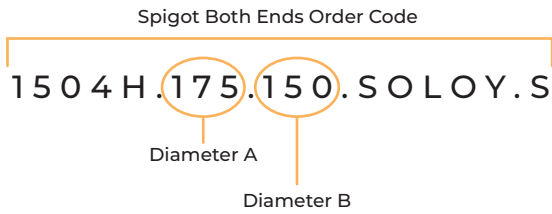
### SN16 DWV RRJ Both Ends Solo Watercare Wye uPVC

1504

| Code                  | Size (mm) |
|-----------------------|-----------|
| 1504H.100.SOLOY.Z     | 100       |
| 1504H.150.100.SOLOY.Z | 150 . 100 |
| 1504H.150.SOLOY.Z     | 150       |
| 1504H.175.100.SOLOY.Z | 175 . 100 |
| 1504H.225.100.SOLOY.Z | 225 . 100 |

Continue to the next column.

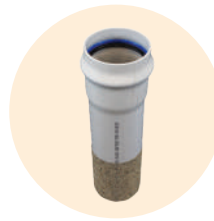
## SN16



### SN16 DWV Spigot Both Ends Solo Watercare Wye

1504

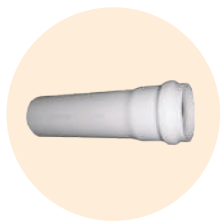
| Code                  | Size (mm) |
|-----------------------|-----------|
| 1504H.100.SOLOY.S     | 100       |
| 1504H.150.100.SOLOY.S | 150 . 100 |
| 1504H.150.SOLOY.S     | 150       |
| 1504H.175.100.SOLOY.S | 175 . 100 |
| 1504H.175.150.SOLOY.S | 175 . 150 |
| 1504H.225.SOLOY.S     | 225       |
| 1504H.225.100.SOLOY.S | 225 . 100 |
| 1504H.225.150.SOLOY.S | 225 . 150 |
| 1504H.300.100.SOLOY.S | 300 . 100 |
| 1504H.300.150.SOLOY.S | 300 . 150 |



### SN16 DWV RRJ Manhole Short G

Z1500

| Code            | Size (mm) | Length |
|-----------------|-----------|--------|
| Z1500HF.100.600 | 100       | 0.6m   |
| Z1500HF.150.600 | 150       | 0.6m   |
| Z1500HF.175.600 | 175       | 0.6m   |
| Z1500HF.225.600 | 225       | 0.6m   |
| Z1500HF.300.600 | 300       | 0.6m   |
| Z1500HF.375.600 | 375       | 0.6m   |
| Z1500HF.475.1   | 475       | 1m     |



### SN16 DWV RRJ Manhole Short UG

Z1500

| Code           | Size (mm) | Length |
|----------------|-----------|--------|
| Z1500H.100.1   | 100       | 1m     |
| Z1500H.100.600 | 100       | 0.6m   |
| Z1500H.150.1   | 150       | 1m     |
| Z1500H.150.600 | 150       | 0.6m   |
| Z1500H.175.1   | 175       | 1m     |
| Z1500H.175.600 | 175       | 0.6m   |
| Z1500H.225.1   | 225       | 1m     |
| Z1500H.225.600 | 225       | 0.6m   |
| Z1500H.300.1   | 300       | 1m     |
| Z1500H.300.600 | 300       | 0.6m   |
| Z1500H.375.600 | 375       | 0.6m   |



### 1580 Manhole Connector

1580

| Code     | Size (mm) |
|----------|-----------|
| 1580.100 | 100       |
| 1580.150 | 150       |
| 1580.175 | 175       |
| 1580.225 | 225       |
| 1580.300 | 300       |
| 1580.375 | 375       |



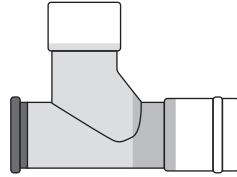
## SN16

Drop Junction Order Code

IDJ.100C

Diameter (mm)

Diameter (mm)

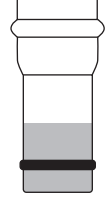


PVC Hydrophylic Manhole Starter Order Code

Z1500HF.100.600

Diameter (mm)

Diameter (mm)



### SN16 DWV Drop Junction Waitakere RRJ

DJ

| Code     | Size (mm) |
|----------|-----------|
| IDJ.100C | 100       |
| IDJ.150C | 150       |
| IDJ.175C | 175       |
| IDJ.225C | 225       |
| IDJ.300C | 300       |



### SN16 DWV Internal Drop Junction Manukau City RRJ

DJ

| Code  | Size (mm) |
|-------|-----------|
| DJ100 | 100       |
| DJ150 | 150       |
| DJ225 | 225       |



### PVC Hydrophylic Manhole Starter

Z1500

| Code            | Size (mm) |
|-----------------|-----------|
| Z1500HF.100.600 | 100       |
| Z1500HF.150.600 | 150       |
| Z1500HF.175.600 | 175       |
| Z1500HF.225.600 | 225       |
| Z1500HF.300.600 | 300       |
| Z1500HF.375.600 | 375       |
| Z1500HF.475.600 | 475       |



### SN16 Pipe PVC RRJ

Z100  
SN16

| Code           | Size (mm) |
|----------------|-----------|
| Z100SN16.100.6 | 100       |
| Z100SN16.150.6 | 150       |
| Z100SN16.175.6 | 175       |
| Z100SN16.225.6 | 225       |
| Z100SN16.300.6 | 300       |
| Z100SN16.375.6 | 375       |
| Z100SN16.475.6 | 475       |
| Z100SN16.525.6 | 525       |



### PVC Hydrophylic Manhole Finisher

HYDRO

| Code              | Size (mm) |
|-------------------|-----------|
| 1500HYDRO.100.600 | 100       |
| 1500HYDRO.125.600 | 125       |
| 1500HYDRO.150.600 | 150       |
| 1500HYDRO.175.600 | 175       |
| 1500HYDRO.225.600 | 225       |
| 1500HYDRO.300.600 | 300       |
| 1500HYDRO.375.600 | 375       |



# ELECTRICAL AND TELECOMMUNICATIONS RANGE

# ELECTRICAL AND TELECOMMUNICATIONS RANGE

## ELECTRICAL

- 30** Electrical Duct Swept Bend SCJ uPVC
- 31** Orange Electrical Duct SOE MD PVC
- Orange Electrical Duct SOE HD PVC
- Electrical Conduit Orange / Grey HD PVC
- Electrical Double Coupler SCJ

## TELECOMMUNICATIONS

- 32** Green Telco Bend SCJ
- White Telco Bend SCJ
- Telco Chorus Double Coupler SCJ
- 33** Red Telco Duct Bends uPVC SCJ
- Green Telco/Chorus Duct PVC

Other colours available. Any radius fabricated.



CATEGORY A UNDERGROUND WIRING SYSTEM



CATEGORY B UNDERGROUND WIRING SYSTEM



HEAVY DUTY



MEDIUM DUTY



HD BENDS EXTENSIVE FITTINGS RANGE



MD BENDS EXTENSIVE FITTINGS RANGE



SERVICE TEMPERATURE RANGE



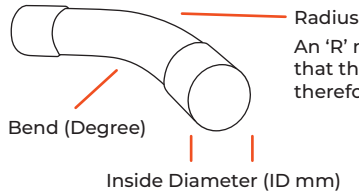
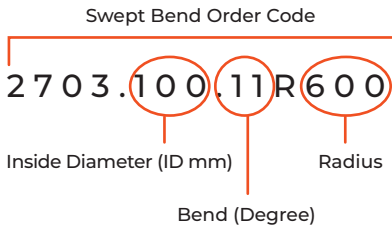
COMPLIANCE & STANDARDS



100% RECYCLABLE PVC



### Code breakdown



Depending on the type of product, the following illustrations explain what the code numbers mean.

An 'R' measurement added to the end of the code, denotes that the bend angle is being made with a larger radius – therefore the bend section of the pipe is a longer length.



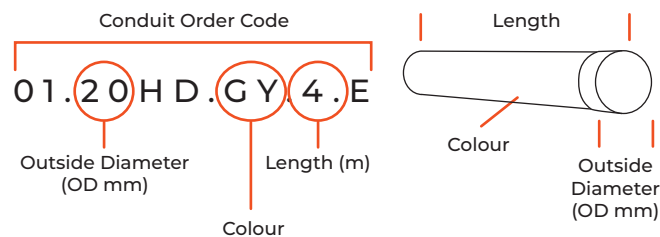
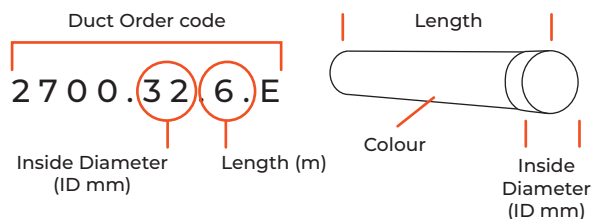
### Electrical Duct Swept Bend SCJ uPVC

2703

| Code        | Density | Std Radius (mm) | Other Radius (mm)      |
|-------------|---------|-----------------|------------------------|
| 2703.32.11  | MD/HD   | 100             |                        |
| 2703.32.22  | MD/HD   | 100             |                        |
| 2703.32.45  | MD/HD   | 100             |                        |
| 2703.32.90  | MD/HD   | 100             |                        |
| 2703.40.11  | MD/HD   | 130             |                        |
| 2703.40.22  | MD/HD   | 130             |                        |
| 2703.40.45  | MD/HD   | 130             |                        |
| 2703.40.90  | MD/HD   | 130             |                        |
| 2703.50.11  | MD/HD   | 150             | 400/600/900/1200/1500  |
| 2703.50.22  | MD/HD   | 150             | 400/600/900/1200/1500  |
| 2703.50.45  | MD/HD   | 150             | 400/600/900/1200/1500  |
| 2703.50.90  | MD/HD   | 150             | 400/600/900/1200/1500  |
| 2703.65.11  | MD/HD   | 200             | 400/600/900/1200/1500  |
| 2703.65.22  | MD/HD   | 200             | 400/600/900/1200/1500  |
| 2703.65.45  | MD/HD   | 200             | 400/600/900/1200/1500  |
| 2703.65.90  | MD/HD   | 200             | 400/600/900/1200/1500  |
| 2703.80.11  | MD/HD   | 250             | 600/900/1200/1500      |
| 2703.80.22  | MD/HD   | 250             | 600/900/1200/1500      |
| 2703.80.45  | MD/HD   | 250             | 600/900/1200/1500      |
| 2703.80.90  | MD/HD   | 250             | 600/900/1200/1500      |
| 2703.100.11 | MD/HD   | 350             | 600/900/1200/1500/2400 |
| 2703.100.22 | MD/HD   | 350             | 600/900/1200/1500/2400 |
| 2703.100.45 | MD/HD   | 350             | 600/900/1200/1500/2400 |
| 2703.100.90 | MD/HD   | 350             | 600/900/1200/1500/2400 |
| 2703.150.11 | MD/HD   | 500             | 600/900/1200/1500/2400 |
| 2703.150.22 | MD/HD   | 500             | 600/900/1200/1500/2400 |
| 2703.150.45 | MD/HD   | 500             | 600/900/1200/1500/2400 |
| 2703.150.90 | MD/HD   | 500             | 600/900/1200/1500/2400 |

Other Radius and colours available on request

## MD | HD DUCT &amp; CONDUIT | ELECTRICAL COUPLERS



### Orange Electrical Duct SOE MD PVC

2700

| Code         | Size (mm) | Length | Colour |
|--------------|-----------|--------|--------|
| 2700.32.6.E  | 32        | 6m     | Orange |
| 2700.40.6.E  | 40        | 6m     | Orange |
| 2700.50.6.E  | 50        | 6m     | Orange |
| 2700.65.6.E  | 65        | 6m     | Orange |
| 2700.80.6.E  | 80        | 6m     | Orange |
| 2700.100.6.E | 100       | 6m     | Orange |
| 2700.150.6.E | 150       | 6m     | Orange |



### Electrical Conduit Orange/Grey HD PVC

01

| Code           | Size (mm) | Length | Colour |
|----------------|-----------|--------|--------|
| 01.20HD.GY.4.E | 20        | 4m     | Grey   |
| 01.20HD.O.4.E  | 20        | 4m     | Orange |
| 01.25HD.GY.4.E | 25        | 4m     | Grey   |
| 01.25HD.O.4.E  | 25        | 4m     | Orange |
| 01.32HD.GY.4.E | 32        | 4m     | Grey   |
| 01.32HD.O.4.E  | 32        | 4m     | Orange |
| 01.40HD.GY.4.E | 40        | 4m     | Grey   |
| 01.40HD.O.4.E  | 40        | 4m     | Orange |
| 01.50HD.GY.4.E | 50        | 4m     | Grey   |
| 01.50HD.O.4.E  | 50        | 4m     | Orange |



### Orange Electrical Duct SOE HD PVC

2700H

| Code          | Size (mm) | Length | Colour |
|---------------|-----------|--------|--------|
| 2700H.80.6.E  | 80        | 6m     | Orange |
| 2700H.100.6.E | 100       | 6m     | Orange |
| 2700H.150.6.E | 150       | 6m     | Orange |



### Conduit Swept Bends

2703H

| Code        | Bend | Std Radius (mm) |
|-------------|------|-----------------|
| 2703H.32.22 | 22°  | 100             |
| 2703H.32.45 | 45°  | 100             |
| 2703H.32.90 | 90°  | 100             |
| 2703H.40.22 | 22°  | 130             |
| 2703H.40.45 | 45°  | 130             |
| 2703H.40.90 | 90°  | 130             |
| 2703H.50.22 | 22°  | 150             |
| 2703H.50.45 | 45°  | 150             |
| 2703H.50.90 | 90°  | 150             |



### Electrical Double Coupler SCJ

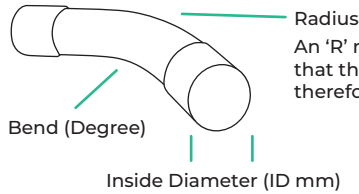
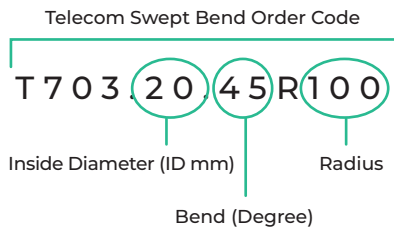
2710

| Code     | Size (mm) | Colour |
|----------|-----------|--------|
| 2710.40  | 40        | Orange |
| 2710.50  | 50        | Orange |
| 2710.65  | 65        | Orange |
| 2710.80  | 80        | Orange |
| 2710.100 | 100       | Orange |
| 2710.150 | 150       | Orange |



## TELCO BENDS

### Code breakdown



Depending on the type of product, the following illustrations explain what the code numbers mean.



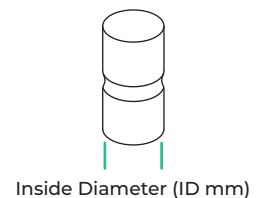
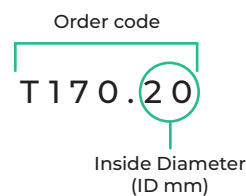
### Green Telco Bend SCJ **T703**

| Code                   | Size (mm) | Bend | RAD |
|------------------------|-----------|------|-----|
| <b>T703.20.45R100</b>  | 20        | 45°  | 100 |
| <b>T703.20.45R240</b>  | 20        | 45°  | 240 |
| <b>T703.20.90R240</b>  | 20        | 90°  | 240 |
| <b>T703.20.90R300</b>  | 20        | 90°  | 300 |
| <b>T703.50.11</b>      | 50        | 11°  |     |
| <b>T703.50.22</b>      | 50        | 22°  |     |
| <b>T703.50.45</b>      | 50        | 45°  |     |
| <b>T703.50.45R400</b>  | 50        | 45°  | 400 |
| <b>T703.50.90</b>      | 50        | 90°  |     |
| <b>T703.50.90R400</b>  | 50        | 90°  | 400 |
| <b>T703.100.11</b>     | 100       | 11°  |     |
| <b>T703.100.22</b>     | 100       | 22°  |     |
| <b>T703.100.22R900</b> | 100       | 22°  | 900 |
| <b>T703.100.30</b>     | 100       | 30°  |     |
| <b>T703.100.45</b>     | 100       | 45°  |     |
| <b>T703.100.90</b>     | 100       | 90°  |     |
| <b>T703.100.90R400</b> | 100       | 90°  | 400 |
| <b>T703.100.90R600</b> | 100       | 90°  | 600 |
| <b>T703.100.90R900</b> | 100       | 90°  | 900 |



### White Telco Bend SCJ **W730**

| Code                  | Size (mm) | Bend | RAD |
|-----------------------|-----------|------|-----|
| <b>W703.20.45R100</b> | 20        | 45°  | 100 |
| <b>W703.20.90R100</b> | 20        | 90°  | 100 |
| <b>W703.50.45</b>     | 50        | 45°  |     |
| <b>W703.50.90</b>     | 50        | 90°  |     |
| <b>W703.100.45</b>    | 100       | 45°  |     |
| <b>W703.100.90</b>    | 100       | 90°  |     |

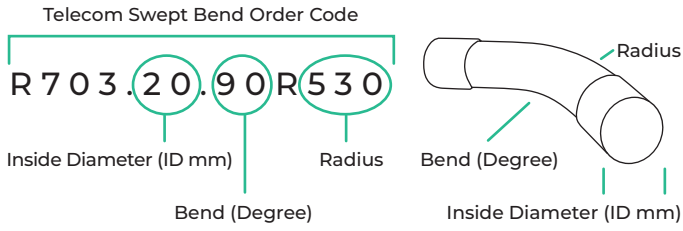


### Telco Chorus Double Coupler SCJ **T170**

| Code            | Size (mm) |
|-----------------|-----------|
| <b>T170.20</b>  | 20        |
| <b>T710.50</b>  | 50        |
| <b>T170.100</b> | 100       |



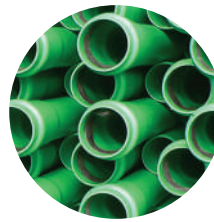
TELCO BENDS



**Red Telco Duct Bends uPVC SCJ**



| Code            | Size (mm) | Bend | RAD |
|-----------------|-----------|------|-----|
| R703.50.45      | 50        | 45°  |     |
| R703.50.90      | 50        | 90°  |     |
| R703.100.45     | 100       | 45°  |     |
| R703.100.90     | 100       | 90°  |     |
| R703.20.90R530  | 20        | 90°  | 530 |
| R703.50.45R400  | 50        | 45°  | 400 |
| R703.50.90R600  | 50        | 90°  | 600 |
| R703.100.22R350 | 100       | 22°  | 350 |
| R703.100.22R600 | 100       | 22°  | 600 |
| R703.100.22R900 | 100       | 22°  | 900 |
| R703.100.30R350 | 100       | 30°  | 350 |
| R703.100.45R350 | 100       | 45°  | 350 |
| R703.100.45R600 | 100       | 45°  | 600 |
| R703.100.45R900 | 100       | 45°  | 900 |
| R703.100.90R350 | 100       | 90°  | 350 |
| R703.100.90R600 | 100       | 90°  | 600 |



**Green Telco/Chorus Duct PVC**



| Code        | Size (mm) | Length | Socket |
|-------------|-----------|--------|--------|
| TC20.SCJ.E  | 20        | 6m     | SCJ    |
| TC50.RRJ.E  | 100       | 6m     | RRJ    |
| TC110.RRJ.E | 100       | 6m     | RRJ    |



# STORMWATER RANGE

# STORMWATER RANGE

## MOULDED

**36-37** Bends | Junctions | Couplers  
Caps

## FABRICATED UNGLASSED/FORMED

**40-43** Bends | Junctions | Saddles  
Caps

## FABRICATED GLASSED

**38-39** Bends | Junctions | Saddles  
Couplers | Inverts

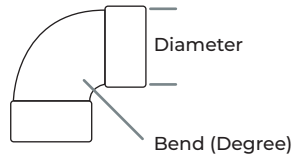
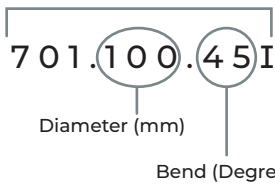




## MOULDED

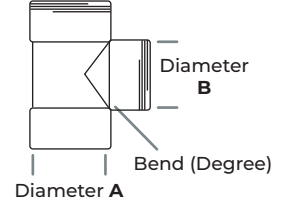
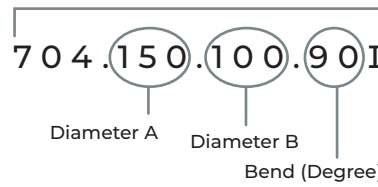
### Code breakdown

Moulded Elbow Bend Order Code



Depending on the type of product, the following illustrations explain what the code numbers mean.

S/W Reducing Junction Order Code



### S/W Elbow Bend Moulded SCJ uPVC

701

| Code        | Size (mm) | Bend |
|-------------|-----------|------|
| 701.100.45I | 100       | 45°  |
| 701.100.90I | 100       | 90°  |
| 701.150.15I | 150       | 15°  |
| 701.150.45I | 150       | 45°  |
| 701.150.90I | 150       | 90°  |
| 701.175.45I | 175       | 45°  |
| 701.175.90I | 175       | 90°  |
| 701.225.15I | 225       | 45°  |
| 701.225.45I | 225       | 45°  |
| 701.225.90I | 225       | 90°  |
| 701.300.45I | 300       | 45°  |
| 701.300.90I | 300       | 90°  |
| 701.375.45I | 375       | 45°  |
| 701.375.90I | 375       | 90°  |



### S/W Red Reducing Junction 90 Moulded uPVC

704

| Code            | Size (mm) | Bend |
|-----------------|-----------|------|
| 704.150.100.90I | 150 . 100 | 90°  |
| 704.175.100.90I | 175 . 100 | 90°  |
| 704.175.150.90I | 175 . 150 | 90°  |
| 704.225.100.88I | 225 . 100 | 90°  |
| 704.225.150.88I | 225 . 150 | 90°  |



### S/W Junction 45 Moulded uPVC

704

| Code        | Size (mm) | Bend |
|-------------|-----------|------|
| 704.150.45I | 150       | 45°  |
| 704.175.45I | 175       | 45°  |
| 704.225.45I | 225       | 45°  |
| 704.300.45I | 300       | 45°  |



### S/W Red Reducing Junction 45 Moulded uPVC

704

| Code             | Size (mm) | Bend |
|------------------|-----------|------|
| 704.150.100.45I  | 150 . 100 | 45°  |
| 704.225.100.45I  | 225 . 100 | 45°  |
| 704.225.150.45I  | 225 . 150 | 45°  |
| 704.225.175.45I  | 225 . 175 | 45°  |
| 704.300.175.45I  | 300 . 175 | 45°  |
| Z704.300.175.45I | 300 . 175 | 45°  |

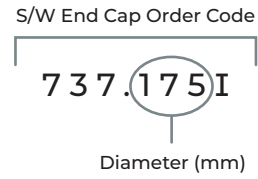
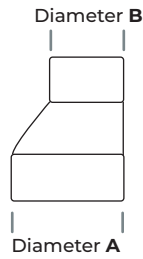
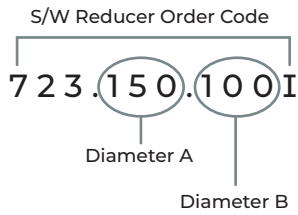


### S/W Junction 90 Moulded uPVC

704

| Code        | Size (mm) | Bend |
|-------------|-----------|------|
| 704.150.90I | 150       | 90°  |
| 704.175.90I | 175       | 90°  |
| 704.225.90I | 225       | 90°  |
| 704.300.90I | 300       | 90°  |

MOULDED



S/W Reducer Moulded MF uPVC

723

| Code         | Size (mm) |
|--------------|-----------|
| 723.150.100I | 150 . 100 |
| 723.175.150I | 175 . 150 |
| 723.225.150I | 225 . 150 |
| 723.225.175I | 225 . 175 |
| 723.300.175I | 300 . 175 |
| 723.300.225I | 300 . 225 |



S/W End Cap uPVC

737

| Code     | Size (mm) |
|----------|-----------|
| 737.175I | 175       |



S/W Reducer Bush Moulded uPVC

724

| Code         | Size (mm) | Type         |
|--------------|-----------|--------------|
| 724.150.100I | 150 . 100 | Level Invert |
| 724.175.150I | 175 . 150 | Level Invert |
| 724.225.175I | 225 . 175 | Level Invert |



DWV Moulded RRJ Slip Coupler

S1511

| Code       | Size (mm) | Type |
|------------|-----------|------|
| S1511.100I | 100       | FF   |
| S1511.150I | 150       | FF   |
| S1511.175I | 175       | FF   |
| S1511.225I | 225       | FF   |
| S1511.300I | 300       | FF   |



S/W Access Cap Moulded uPVC

736

| Code    | Size (mm) |
|---------|-----------|
| 736.100 | 100       |
| 736.150 | 150       |
| 736.175 | 175       |
| 736.225 | 225       |
| 736.300 | 300       |

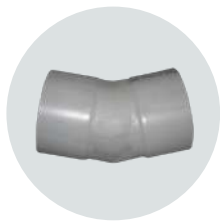
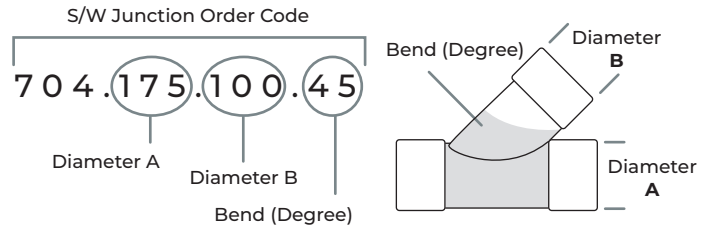
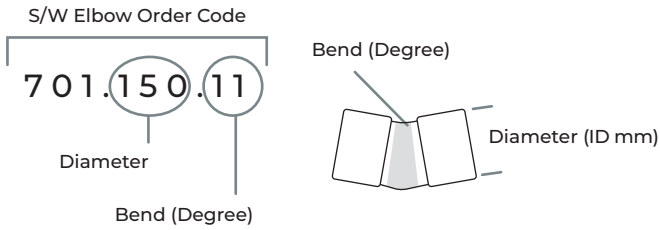


S/W Vermin Stoppers PVC

183

| Code    | Size (mm) |
|---------|-----------|
| 183.100 | 100       |
| 183.150 | 150       |
| 183.225 | 225       |

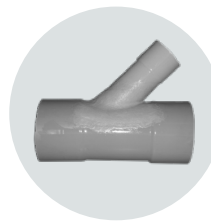
## FABRICATED GLASSED



### S/W Elbow Bend Glassed SCJ uPVC

701

| Code       | Size (mm) | Bend |
|------------|-----------|------|
| 701.150.11 | 150       | 11°  |
| 701.150.22 | 150       | 22°  |
| 701.150.45 | 150       | 45°  |
| 701.150.90 | 150       | 90°  |
| 701.175.11 | 175       | 11°  |
| 701.175.22 | 175       | 22°  |
| 701.175.45 | 175       | 45°  |
| 701.175.90 | 175       | 90°  |
| 701.225.11 | 225       | 11°  |
| 701.225.22 | 225       | 22°  |
| 701.225.45 | 225       | 45°  |
| 701.225.90 | 225       | 90°  |
| 701.300.11 | 300       | 11°  |
| 701.300.22 | 300       | 22°  |
| 701.300.45 | 300       | 45°  |
| 701.300.90 | 300       | 90°  |
| 701.375.11 | 375       | 11°  |
| 701.375.22 | 375       | 22°  |
| 701.375.45 | 375       | 45°  |
| 701.375.90 | 375       | 90°  |
| 701.475.11 | 475       | 11°  |
| 701.475.22 | 475       | 22°  |
| 701.475.45 | 475       | 45°  |
| 701.475.90 | 475       | 90°  |



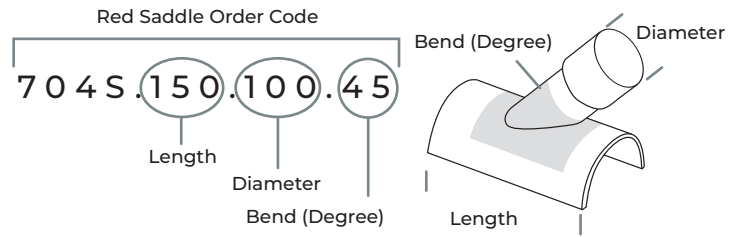
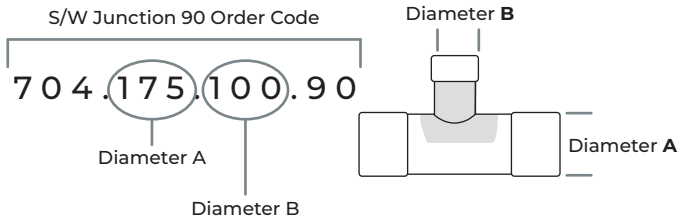
### S/W Junction Glassed 45 SCJ UPVC

704

| Code           | Size (mm) | Bend |
|----------------|-----------|------|
| 704.175.100.45 | 175 . 100 | 45°  |
| 704.175.150.45 | 175 . 150 | 45°  |
| 704.175.45     | 175       | 45°  |
| 704.225.100.45 | 225 . 100 | 45°  |
| 704.225.150.45 | 225 . 150 | 45°  |
| 704.225.175.45 | 225 . 175 | 45°  |
| 704.225.45     | 225       | 45°  |
| 704.300.100.45 | 300 . 100 | 45°  |
| 704.300.150.45 | 300 . 150 | 45°  |
| 704.300.175.45 | 300 . 175 | 45°  |
| 704.300.225.45 | 300 . 225 | 45°  |
| 704.300.45     | 300       | 45°  |
| 704.375.100.45 | 375 . 100 | 45°  |
| 704.375.150.45 | 375 . 150 | 45°  |
| 704.375.175.45 | 375 . 175 | 45°  |
| 704.375.225.45 | 375 . 225 | 45°  |
| 704.375.300.45 | 375 . 300 | 45°  |
| 704.375.45     | 375       | 45°  |
| 704.475.150.45 | 475 . 150 | 45°  |
| 704.475.175.45 | 475 . 175 | 45°  |
| 704.475.225.45 | 475 . 225 | 45°  |
| 704.475.300.45 | 475 . 300 | 45°  |
| 704.475.375.45 | 475 . 375 | 45°  |
| 704.475.45     | 475       | 45°  |



FABRICATED GLASSED



S/W Junction  
Glassed 90 SCJ  
uPVC

704

| Code           | Size (mm) | Bend |
|----------------|-----------|------|
| 704.175.100.90 | 175 . 100 | 90°  |
| 704.175.150.90 | 175 . 150 | 90°  |
| 704.175.90     | 175       | 90°  |
| 704.225.100.90 | 225 . 100 | 90°  |
| 704.225.150.90 | 225 . 150 | 90°  |
| 704.225.175.90 | 225 . 175 | 90°  |
| 704.225.90     | 225       | 90°  |
| 704.300.100.90 | 300 . 100 | 90°  |
| 704.300.150.90 | 300 . 150 | 90°  |
| 704.300.175.90 | 300 . 175 | 90°  |
| 704.300.225.90 | 300 . 225 | 90°  |
| 704.300.90     | 300       | 90°  |
| 704.375.100.90 | 375 . 100 | 90°  |
| 704.375.150.90 | 375 . 150 | 90°  |
| 704.375.175.90 | 375 . 175 | 90°  |
| 704.375.225.90 | 375 . 225 | 90°  |
| 704.375.300.90 | 375 . 300 | 90°  |
| 704.375.90     | 375       | 90°  |
| 704.475.150.90 | 475 . 150 | 90°  |
| 704.475.175.90 | 475 . 175 | 90°  |
| 704.475.225.90 | 475 . 225 | 90°  |
| 704.475.300.90 | 475 . 300 | 90°  |
| 704.475.375.90 | 475 . 375 | 90°  |
| 704.475.90     | 475       | 90°  |

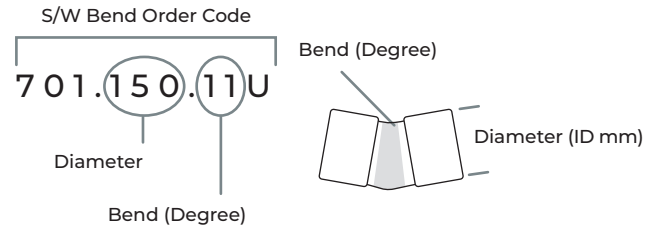
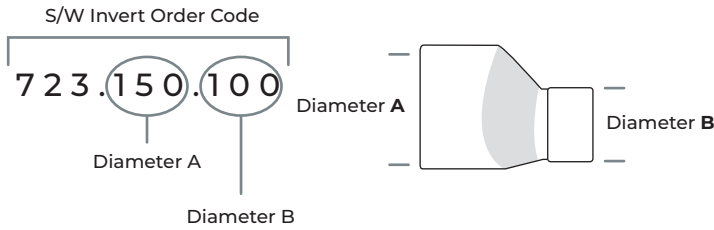


S/W Red Saddle  
Glassed 45 uPVC

704S

| Code            | Size (mm) | Bend |
|-----------------|-----------|------|
| 704S.150.100.45 | 150 . 100 | 45°  |
| 704S.175.100.45 | 175 . 100 | 45°  |
| 704S.175.150.45 | 175 . 150 | 45°  |
| 704S.225.100.45 | 225 . 100 | 45°  |
| 704S.225.150.45 | 225 . 150 | 45°  |
| 704S.225.175.45 | 225 . 175 | 45°  |
| 704S.300.100.45 | 300 . 100 | 45°  |
| 704S.300.150.45 | 300 . 150 | 45°  |
| 704S.300.175.45 | 300 . 175 | 45°  |
| 704S.300.225.45 | 300 . 225 | 45°  |
| 704S.375.100.45 | 375 . 100 | 45°  |
| 704S.375.150.45 | 375 . 150 | 45°  |
| 704S.375.175.45 | 375 . 175 | 45°  |
| 704S.375.225.45 | 375 . 225 | 45°  |
| 704S.375.300.45 | 375 . 300 | 45°  |

## FABRICATED UNGLASSED/FORMED



### S/W Level Invert SCJ uPVC

723

| Code        | Size (mm) |
|-------------|-----------|
| 723.150.100 | 150 . 100 |
| 723.175.100 | 175 . 100 |
| 723.175.150 | 175 . 150 |
| 723.225.100 | 225 . 100 |
| 723.225.150 | 225 . 150 |
| 723.225.175 | 225 . 175 |
| 723.300.100 | 300 . 100 |
| 723.300.150 | 300 . 150 |
| 723.300.175 | 300 . 175 |
| 723.300.225 | 300 . 225 |
| 723.375.100 | 375 . 100 |
| 723.375.150 | 375 . 150 |
| 723.375.175 | 375 . 175 |
| 723.375.225 | 375 . 225 |
| 723.375.300 | 375 . 300 |
| 723.475.175 | 475 . 175 |
| 723.475.225 | 475 . 225 |
| 723.475.300 | 475 . 300 |
| 723.475.375 | 475 . 375 |



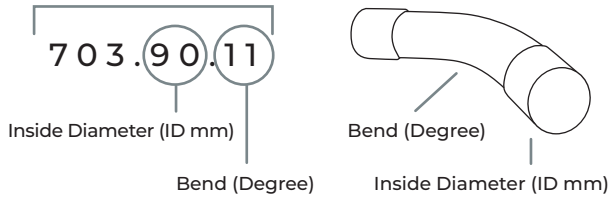
### S/W Bend Unglassed SCJ uPVC

701

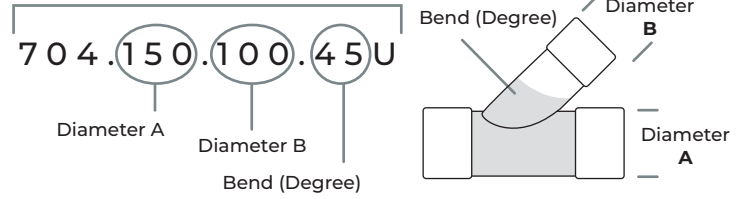
| Code        | Size (mm) | Bend |
|-------------|-----------|------|
| 701.150.11U | 150       | 11°  |
| 701.150.22U | 150       | 22°  |
| 701.150.45U | 150       | 45°  |
| 701.150.90U | 150       | 90°  |
| 701.175.11U | 175       | 11°  |
| 701.175.22U | 175       | 22°  |
| 701.175.45U | 175       | 45°  |
| 701.175.90U | 175       | 90°  |
| 701.225.11U | 225       | 11°  |
| 701.225.22U | 225       | 22°  |
| 701.225.45U | 225       | 45°  |
| 701.225.90U | 225       | 90°  |
| 701.300.11U | 300       | 11°  |
| 701.300.22U | 300       | 22°  |
| 701.300.45U | 300       | 45°  |
| 701.300.90U | 300       | 90°  |
| 701.375.11U | 375       | 11°  |
| 701.375.22U | 375       | 22°  |
| 701.375.45U | 375       | 45°  |
| 701.375.90U | 375       | 90°  |

FABRICATED UNGLASSED/FORMED

S/W Formed Bend Order Code



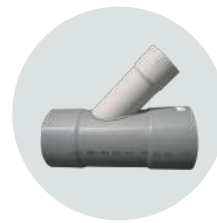
S/W Red Junction Order Code



S/W Formed Bend SCJ uPVC

703

| Code       | Size (mm) | Bend |
|------------|-----------|------|
| 703.90.11  | 90        | 11°  |
| 703.90.22  | 90        | 22°  |
| 703.90.45  | 90        | 45°  |
| 703.90.90  | 90        | 90°  |
| 703.100.11 | 100       | 11°  |
| 703.100.22 | 100       | 22°  |
| 703.100.45 | 100       | 45°  |
| 703.100.90 | 100       | 90°  |
| 703.150.11 | 150       | 11°  |
| 703.150.22 | 150       | 22°  |
| 703.150.45 | 150       | 45°  |
| 703.150.90 | 150       | 90°  |
| 703.175.11 | 175       | 11°  |
| 703.175.22 | 175       | 22°  |
| 703.175.45 | 175       | 45°  |
| 703.175.90 | 175       | 90°  |
| 703.225.11 | 225       | 11°  |
| 703.225.22 | 225       | 22°  |
| 703.225.45 | 225       | 45°  |
| 703.225.90 | 225       | 90°  |
| 703.300.11 | 300       | 11°  |
| 703.300.22 | 300       | 22°  |
| 703.300.45 | 300       | 45°  |
| 703.300.90 | 300       | 90°  |

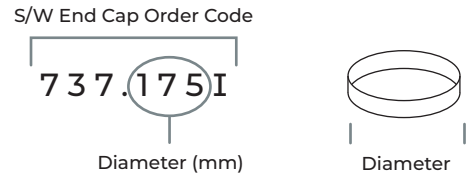
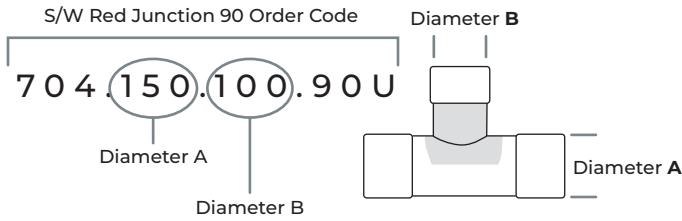


S/W Red Junction Unglassed 45 uPVC

704

| Code            | Size (mm) | Bend |
|-----------------|-----------|------|
| 704.150.100.45U | 150 . 100 | 45°  |
| 704.175.100.45U | 175 . 100 | 45°  |
| 704.175.150.45U | 175 . 150 | 45°  |
| 704.175.45U     | 175       | 45°  |
| 704.225.100.45U | 225 . 100 | 45°  |
| 704.225.150.45U | 225 . 150 | 45°  |
| 704.225.175.45U | 225 . 175 | 45°  |
| 704.225.45U     | 225       | 45°  |
| 704.300.100.45U | 300 . 100 | 45°  |
| 704.300.150.45U | 300 . 150 | 45°  |
| 704.300.175.45U | 300 . 175 | 45°  |
| 704.300.225.45U | 300 . 225 | 45°  |
| 704.300.45U     | 300       | 45°  |
| 704.375.100.45U | 375 . 100 | 45°  |
| 704.375.150.45U | 375 . 150 | 45°  |
| 704.375.175.45U | 375 . 175 | 45°  |
| 704.375.225.45U | 375 . 225 | 45°  |
| 704.375.300.45U | 375 . 300 | 45°  |
| 704.375.45U     | 375       | 45°  |

## FABRICATED UNGLASSED/FORMED



### S/W Red Junction Unglassed 90 uPVC

704

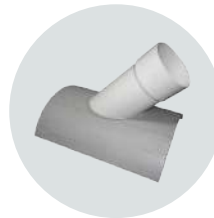
| Code            | Size (mm) | Bend |
|-----------------|-----------|------|
| 704.150.100.90U | 150 . 100 | 90°  |
| 704.175.100.90U | 175 . 100 | 90°  |
| 704.175.150.90U | 175 . 150 | 90°  |
| 704.175.90U     | 175       | 90°  |
| 704.225.100.90U | 225 . 100 | 90°  |
| 704.225.150.90U | 225 . 150 | 90°  |
| 704.225.175.90U | 225 . 175 | 90°  |
| 704.225.90U     | 225       | 90°  |
| 704.300.100.90U | 300 . 100 | 90°  |
| 704.300.150.90U | 300 . 150 | 90°  |
| 704.300.175.90U | 300 . 175 | 90°  |
| 704.300.225.90U | 300 . 225 | 90°  |
| 704.300.90U     | 300       | 90°  |
| 704.375.100.90U | 375 . 100 | 90°  |
| 704.375.150.90U | 375 . 150 | 90°  |
| 704.375.175.90U | 375 . 175 | 90°  |
| 704.375.225.90U | 375 . 225 | 90°  |
| 04.375.300.90U  | 375 . 300 | 90°  |
| 704.375.90U     | 375       | 90°  |



### S/W End Cap uPVC

737

| Code     | Size (mm) |
|----------|-----------|
| 737.175  | 175       |
| 737.175I | 175       |
| 737.225  | 225       |
| 737.300  | 300       |
| 737.375  | 375       |
| 737.475  | 475       |



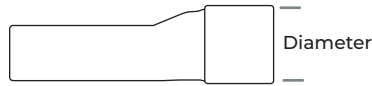
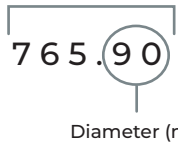
### S/W Saddle Unglassed uPVC

704S

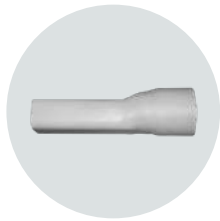
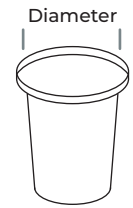
| Code             | Size (mm) | Bend |
|------------------|-----------|------|
| 704S.150.100.45U | 150 . 100 | 45°  |
| 704S.175.100.45U | 175 . 100 | 45°  |
| 704S.175.150.45U | 175 . 150 | 45°  |
| 704S.225.100.45U | 225 . 100 | 45°  |
| 704S.225.150.45U | 225 . 150 | 45°  |
| 704S.225.175.45U | 225 . 175 | 45°  |
| 704S.300.100.45U | 300 . 100 | 45°  |
| 704S.300.150.45U | 300 . 150 | 45°  |
| 704S.300.175.45U | 300 . 175 | 45°  |
| 704S.300.225.45U | 300 . 225 | 45°  |
| 704S.375.100.45U | 375 . 100 | 45°  |
| 704S.375.150.45U | 375 . 150 | 45°  |
| 704S.375.175.45U | 375 . 175 | 45°  |
| 704S.375.225.45U | 375 . 225 | 45°  |

FABRICATED UNGLASSED/FORMED

S/W Kerb Outlet Order Code



Downpipe Dropper Order Code



S/W Kerb Outlet uPVC

765

| Code     | Size (mm) | Type        |
|----------|-----------|-------------|
| 765.90   | 90        |             |
| 765.90G  | 90        | Gritted     |
| 765.100  | 100       |             |
| 765.100E | 100       | Extender    |
| 765.100G | 100       | Gritted     |
| 765.100L | 100       | 1500mm Long |



Downpipe Dropper

D700

| Code     | Size (mm) |
|----------|-----------|
| D700.100 | 100       |
| D700.150 | 150       |
| D700.175 | 175       |
| D700.225 | 225       |



Floodgate for Stormwater

FG

| Code   | Size (mm) | Type    |
|--------|-----------|---------|
| FG100  | 100       |         |
| FG100L | 100       | Moulded |
| FG150  | 150       |         |
| FG150L | 150       | Moulded |
| FG175  | 175       |         |
| FG175L | 175       | Moulded |
| FG225  | 225       |         |
| FG225L | 225       | Moulded |
| FG300  | 300       |         |
| FG300L | 300       | Moulded |
| FG375  | 375       |         |
| FG475  | 475       |         |



Gully Dish Riser Iplex Style

GD

| Code  | Size (mm) |
|-------|-----------|
| GD100 | 100       |
| GD200 | 200       |
| GD300 | 300       |

# PRESSURE RANGE



# PRESSURE RANGE

## MOULDED

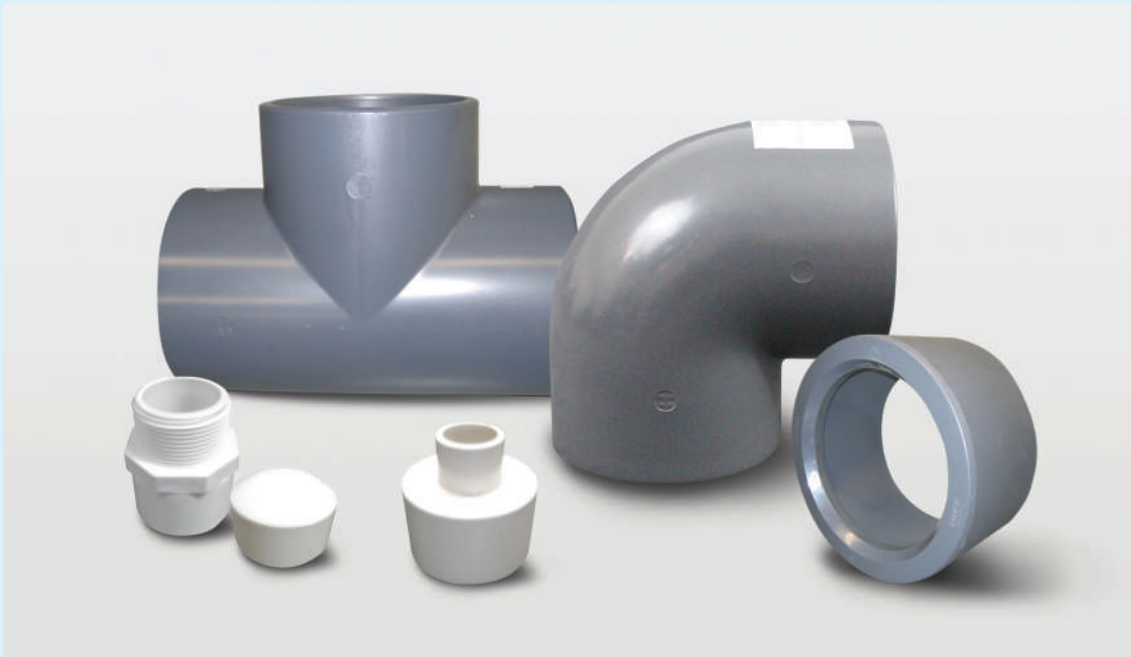
**46-50** Elbows | Tees | Couplers  
Sockets | Caps | Tees | Pipes

## FABRICATED

**53** Adaptors

## FORMED

**51-53** Bends | Couplers | Sockets



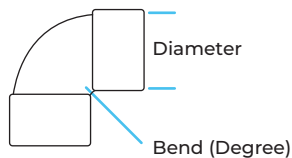
### Code breakdown

Small Elbow Order Code

8 0 1 . 1 5 . 4 5 I

Diameter (mm)

Bend (Degree)



Depending on the type of product, the following illustrations explain what the code numbers mean.



### Pressure Small Elbow uPVC SCJ

801

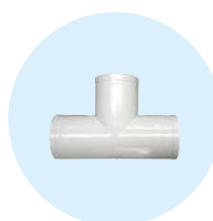
| Code        | Size (mm) | Type | Bend |
|-------------|-----------|------|------|
| 801.15.45I  | 15        | PN15 | 45°  |
| 801.15.90I  | 15        | PN15 | 90°  |
| 801.20.45I  | 20        | PN15 | 45°  |
| 801.20.90I  | 20        | PN15 | 90°  |
| 801.25.45I  | 25        | PN15 | 45°  |
| 801.25.90I  | 25        | PN15 | 90°  |
| 801.32.45I  | 32        | PN15 | 45°  |
| 801.32.90I  | 32        | PN15 | 90°  |
| 801.40.45I  | 40        | PN12 | 45°  |
| 801.40.90I  | 40        | PN12 | 90°  |
| 801.50.45I  | 50        | PN12 | 45°  |
| 801.50.90I  | 50        | PN12 | 90°  |
| 801.65.45I  | 65        | PN12 | 45°  |
| 801.65.90I  | 65        | PN12 | 90°  |
| 801.80.45I  | 80        | PN12 | 45°  |
| 801.80.90I  | 80        | PN12 | 90°  |
| 801.100.45I | 100       | PN12 | 45°  |
| 801.100.90I | 100       | PN12 | 90°  |



### Pressure INJ Mould Elbow uPVC SCJ

801

| Code       | Size (mm) | Type | Bend |
|------------|-----------|------|------|
| 801.125.45 | 125       | PN12 | 45°  |
| 801.125.90 | 125       | PN10 | 90°  |
| 801.150.45 | 150       | PN10 | 45°  |
| 801.150.90 | 150       | PN10 | 90°  |
| 801.175.45 | 175       | PN10 | 45°  |
| 801.175.90 | 175       | PN10 | 90°  |
| 801.200.45 | 200       | PN10 | 45°  |
| 801.200.90 | 200       | PN10 | 90°  |
| 801.225.45 | 225       | PN10 | 45°  |
| 801.225.90 | 225       | PN10 | 90°  |
| 801.250.45 | 250       | PN10 | 45°  |
| 801.250.90 | 250       | PN10 | 90°  |
| 801.300.45 | 300       | PN10 | 45°  |
| 801.300.90 | 300       | PN10 | 90°  |



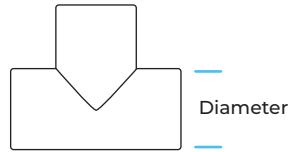
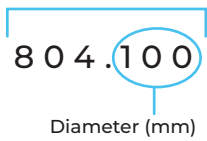
### Pressure Small Tee uPVC SCJ

804

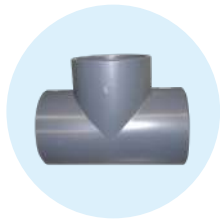
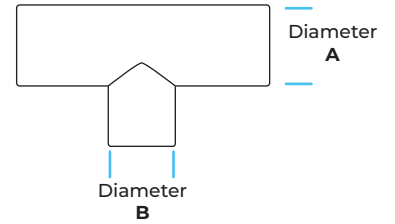
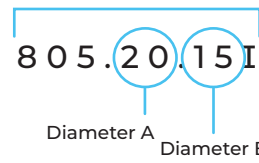
| Code    | Size (mm) | Type |
|---------|-----------|------|
| 804.15I | 15        | PN10 |
| 804.20I | 20        | PN15 |
| 804.25I | 25        | PN15 |
| 804.32I | 32        | PN15 |
| 804.40I | 40        | PN12 |
| 804.50I | 50        | PN12 |
| 804.65I | 65        | PN12 |
| 804.80I | 80        | PN12 |

MOULDED

INJ Mould Tee Order Code



Small Reducing Tee Order Code



Pressure INJ Mould Tee uPVC SCJ

804

| Code    | Size (mm) | Type |
|---------|-----------|------|
| 804.100 | 100       | PN10 |
| 804.125 | 125       | PN10 |
| 804.150 | 150       | PN10 |
| 804.175 | 175       | PN10 |
| 804.200 | 200       | PN10 |
| 804.225 | 225       | PN10 |
| 804.250 | 250       | PN10 |
| 804.300 | 300       | PN10 |



Pressure Small Reducing Tee uPVC SCJ

805

| Code        | Size (mm) | Type |
|-------------|-----------|------|
| 805.20.15I  | 20 . 15   | PN15 |
| 805.25.15I  | 25 . 15   | PN15 |
| 805.25.20I  | 25 . 20   | PN15 |
| 805.32.15I  | 32 . 15   | PN15 |
| 805.32.20I  | 32 . 20   | PN15 |
| 805.32.25I  | 32 . 25   | PN15 |
| 805.40.15I  | 40 . 15   | PN12 |
| 805.40.20I  | 40 . 20   | PN12 |
| 805.40.25I  | 40 . 25   | PN12 |
| 805.40.32I  | 40 . 32   | PN12 |
| 805.50.15I  | 50 . 15   | PN12 |
| 805.50.20I  | 50 . 20   | PN12 |
| 805.50.25I  | 50 . 25   | PN12 |
| 805.50.32I  | 50 . 32   | PN12 |
| 805.50.40I  | 50 . 40   | PN12 |
| 805.80.50I  | 80 . 50   | PN12 |
| 805.100.50I | 100 . 50  | PN12 |
| 805.100.80I | 100 . 80  | PN12 |



Pressure Small Faucet Coupler uPVC SCJ

806

| Code     | Size (mm) | Type |
|----------|-----------|------|
| 806.15I  | 15        | PN15 |
| 806.20I  | 20        | PN15 |
| 806.25I  | 25        | PN15 |
| 806.32I  | 32        | PN15 |
| 806.40I  | 40        | PN12 |
| 806.50I  | 50        | PN12 |
| 806.65I  | 65        | PN12 |
| 806.80I  | 80        | PN12 |
| 806.100I | 100       | PN12 |



Pressure Small Faucet Tee uPVC SCJ

807

| Code       | Size (mm) | Type |
|------------|-----------|------|
| 807.15.90I | 15        | PN15 |



Press Faucet Elbow uPVC SCJ

808

| Code       | Size (mm) | Type |
|------------|-----------|------|
| 808.15.90I | 15        | PN15 |
| 808.20.90I | 20        | PN15 |

Small Coupler Order Code

810.15I

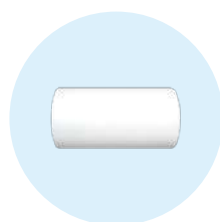
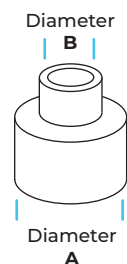
Diameter (mm)



Small Red Socket Order Code

823.20.15I

Diameter A Diameter B



### Pressure Small Coupler uPVC SCJ

810

| Code     | Size (mm) | Type |
|----------|-----------|------|
| 810.15I  | 15        | PN15 |
| 810.20I  | 20        | PN15 |
| 810.25I  | 25        | PN15 |
| 810.32I  | 32        | PN15 |
| 810.40I  | 40        | PN12 |
| 810.50I  | 50        | PN12 |
| 810.80I  | 80        | PN12 |
| 810.100I | 100       | PN12 |



### Pressure Small Red Socket uPVC SCJ

823

| Code        | Size (mm) | Type |
|-------------|-----------|------|
| 823.20.15I  | 20 . 15   | PN15 |
| 823.25.15I  | 25 . 15   | PN15 |
| 823.25.20I  | 25 . 20   | PN15 |
| 823.32.15I  | 32 . 15   | PN15 |
| 823.32.20I  | 32 . 20   | PN15 |
| 823.32.25I  | 32 . 25   | PN15 |
| 823.40.15I  | 40 . 15   | PN12 |
| 823.40.20I  | 40 . 20   | PN12 |
| 823.40.25I  | 40 . 25   | PN12 |
| 823.40.32I  | 40 . 32   | PN12 |
| 823.50.20I  | 50 . 20   | PN12 |
| 823.50.25I  | 50 . 25   | PN12 |
| 823.50.32I  | 50 . 32   | PN12 |
| 823.50.40I  | 50 . 40   | PN12 |
| 823.65.50I  | 65 . 50   | PN12 |
| 823.80.50I  | 80 . 50   | PN12 |
| 823.80.65I  | 80 . 65   | PN12 |
| 823.100.50I | 100 . 50  | PN12 |
| 823.100.80I | 100 . 80  | PN12 |

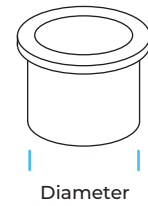
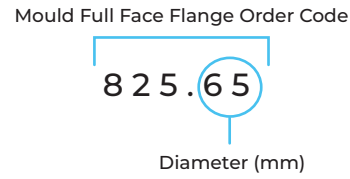
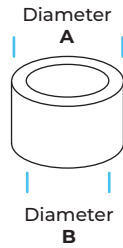
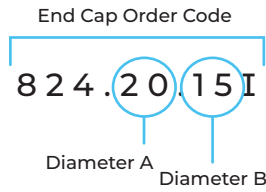


### Pressure Small Valve Socket uPVC SCJ

813

| Code     | Size (mm) | Type |
|----------|-----------|------|
| 813.15I  | 15        | PN15 |
| 813.20I  | 20        | PN15 |
| 813.25I  | 25        | PN15 |
| 813.32I  | 32        | PN15 |
| 813.40I  | 40        | PN12 |
| 813.50I  | 50        | PN12 |
| 813.65I  | 65        | PN12 |
| 813.80I  | 80        | PN12 |
| 813.100I | 100       | PN12 |

MOULDED



Pressure Small Red Bush uPVC SCJ

824

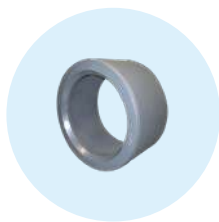
| Code        | Size (mm) | Type |
|-------------|-----------|------|
| 824.20.15I  | 20 . 15   | PN15 |
| 824.25.15I  | 25 . 15   | PN15 |
| 824.25.20I  | 25 . 20   | PN15 |
| 824.32.25I  | 32 . 25   | PN15 |
| 824.40.25I  | 40 . 25   | PN12 |
| 824.40.32I  | 40 . 32   | PN12 |
| 824.50.25I  | 50 . 25   | PN12 |
| 824.50.32I  | 50 . 32   | PN12 |
| 824.50.40I  | 50 . 40   | PN12 |
| 824.80.50I  | 80 . 50   | PN12 |
| 824.80.65I  | 80 . 65   | PN12 |
| 824.100.50I | 100 . 50  | PN12 |
| 824.100.80I | 100 . 80  | PN12 |



Pressure INJ Mould Full Face Flange uPVC

825

| Code    | Size (mm) | Type |
|---------|-----------|------|
| 825.65  | 65        |      |
| 825.80  | 80        |      |
| 825.100 | 100       |      |
| 825.150 | 150       |      |



Pressure INJ Red Bush uPVC SCJ

824

| Code        | Size (mm) | Type |
|-------------|-----------|------|
| 824.125.100 | 125 . 100 | PN10 |
| 824.150.100 | 150 . 100 | PN10 |
| 824.150.125 | 150 . 125 | PN10 |
| 824.175.150 | 175 . 150 | PN10 |
| 824.200.100 | 200 . 100 | PN10 |
| 824.200.150 | 200 . 150 | PN10 |
| 824.200.175 | 200 . 175 | PN10 |
| 824.225.150 | 225 . 150 | PN10 |
| 824.225.175 | 225 . 175 | PN10 |
| 824.225.200 | 225 . 200 | PN10 |
| 824.300.200 | 300 . 200 | PN10 |
| 824.300.225 | 300 . 225 | PN10 |

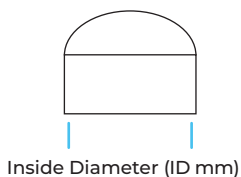
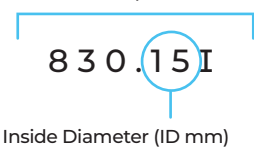


Pressure INJ Mould Stub Flange uPVC

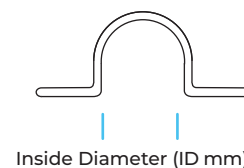
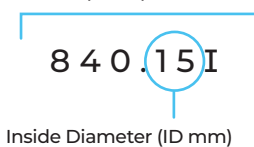
826

| Code    | Size (mm) | Type |
|---------|-----------|------|
| 826.50  | 50        | PN10 |
| 826.65  | 65        | PN10 |
| 826.80  | 80        | PN10 |
| 826.100 | 100       | PN10 |
| 826.110 | 110       | PN10 |
| 826.125 | 125       | PN10 |
| 826.150 | 150       | PN10 |
| 826.175 | 175       | PN10 |
| 826.200 | 200       | PN10 |
| 826.225 | 225       | PN10 |
| 826.250 | 250       | PN10 |
| 826.300 | 300       | PN10 |
| 826.375 | 375       | PN10 |

Small End Cap Order Code



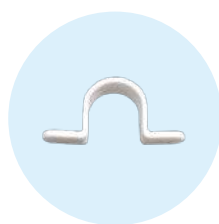
Small Pipe Clip Order Code



Pressure Small End Cap uPVC

830

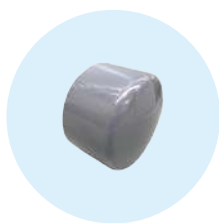
| Code     | Size (mm) | Type |
|----------|-----------|------|
| 830.15I  | 15        | PN15 |
| 830.20I  | 20        | PN15 |
| 830.25I  | 25        | PN15 |
| 830.32I  | 32        | PN15 |
| 830.40I  | 40        | PN12 |
| 830.50I  | 50        | PN12 |
| 830.65I  | 65        | PN12 |
| 830.80I  | 80        | PN12 |
| 830.100I | 100       | PN12 |



Pressure Small Pipe Clip uPVC

840

| Code    | Size (mm) |
|---------|-----------|
| 840.15I | 15        |
| 840.20I | 20        |
| 840.25I | 25        |



Pressure INJ Mould End Cap uPVC

830

| Code    | Size (mm) | Type |
|---------|-----------|------|
| 830.100 | 100       | PN10 |
| 830.125 | 125       | PN10 |
| 830.150 | 150       | PN10 |
| 830.175 | 175       | PN10 |
| 830.200 | 200       | PN10 |
| 830.225 | 225       | PN10 |
| 830.250 | 250       | PN10 |
| 830.300 | 300       | PN10 |



Pressure Pipe uPVC SCJ

800

| Code              | Size (mm) | Type |
|-------------------|-----------|------|
| 800.15PN15.5.8.E  | 15 5.8    | PN15 |
| 800.20PN15.5.8.E  | 20 5.8    | PN15 |
| 800.25PN15.5.8.E  | 25 5.8    | PN15 |
| 800.32PN12.5.8.E  | 32 5.8    | PN12 |
| 800.32PN15.6.E    | 32        | PN15 |
| 800.40PN12.5.8.E  | 40 5.8    | PN12 |
| 800.40PN15.6.E    | 40        | PN15 |
| 800.50PN12.5.8.E  | 50 5.8    | PN12 |
| 800.50PN15.6.E    | 50        | PN15 |
| 800.65PN12.6.E    | 65        | PN12 |
| 800.80PN12.6.E    | 80        | PN12 |
| 800.100PN9.6.E    | 100       | PN9  |
| 800.100PN12.6SJ.E | 100       | PN12 |



Pressure Small Thread Endplug uPVC

837

| Code    | Size (mm) | Type |
|---------|-----------|------|
| 837.15I | 15        | PN15 |
| 837.20I | 20        | PN15 |
| 837.25I | 25        | PN15 |
| 837.32I | 32        | PN15 |
| 837.40I | 40        | PN12 |
| 837.50I | 50        | PN12 |



Pressure Pipe uPVC RRJ

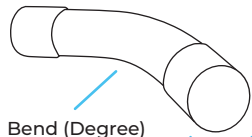
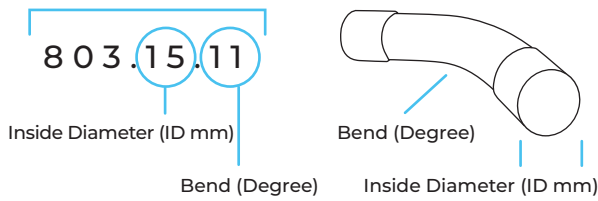
Z800

| Code             | Size (mm) | Type |
|------------------|-----------|------|
| Z800.50PN12.6.E  | 50        | PN12 |
| Z800.100PN6.6.E  | 100       | PN6  |
| Z800.100PN9.6.E  | 100       | PN9  |
| Z800.150.PN6.6.E | 150       | PN6  |
| Z800.150PN12.6.E | 150       | PN12 |
| Z800.150PN9.6.E  | 150       | PN9  |
| Z800.200PN12.6.E | 200       | PN12 |



FORMED

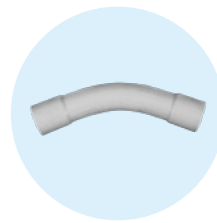
Pressure Swept Bend Order Code



Pressure Swept Bend uPVC SCJ

803

| Code      | Size (mm) |      | Bend |
|-----------|-----------|------|------|
| 803.15.11 | 15        | PN12 | 11°  |
| 803.15.22 | 15        | PN12 | 22°  |
| 803.15.45 | 15        | PN12 | 45°  |
| 803.15.90 | 15        | PN12 | 90°  |
| 803.20.11 | 20        | PN12 | 11°  |
| 803.20.22 | 20        | PN12 | 22°  |
| 803.20.45 | 20        | PN12 | 45°  |
| 803.20.90 | 20        | PN12 | 90°  |
| 803.25.11 | 25        | PN12 | 11°  |
| 803.25.22 | 25        | PN12 | 22°  |
| 803.25.45 | 25        | PN12 | 45°  |
| 803.25.90 | 25        | PN12 | 90°  |
| 803.32.11 | 32        | PN12 | 11°  |
| 803.32.22 | 32        | PN12 | 22°  |
| 803.32.45 | 32        | PN12 | 45°  |
| 803.32.90 | 32        | PN12 | 90°  |
| 803.40.11 | 40        | PN12 | 11°  |
| 803.40.22 | 40        | PN12 | 22°  |
| 803.40.45 | 40        | PN12 | 45°  |
| 803.40.90 | 40        | PN12 | 90°  |
| 803.50.11 | 50        | PN12 | 11°  |
| 803.50.22 | 50        | PN12 | 22°  |
| 803.50.45 | 50        | PN12 | 45°  |
| 803.50.90 | 50        | PN12 | 90°  |
| 803.65.11 | 65        | PN12 | 11°  |
| 803.65.22 | 65        | PN12 | 22°  |
| 803.65.45 | 65        | PN12 | 45°  |
| 803.65.90 | 65        | PN12 | 90°  |
| 803.80.11 | 80        | PN12 | 11°  |
| 803.80.22 | 80        | PN12 | 22°  |



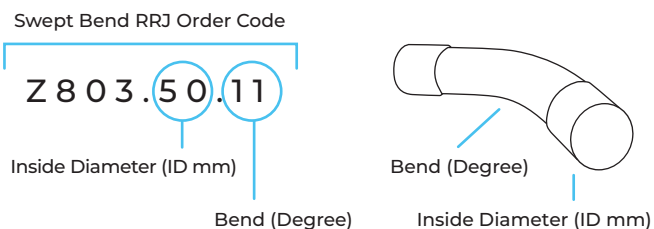
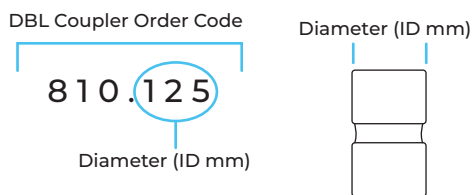
Pressure Swept Bend uPVC SCJ

803

| Code       | Size (mm) |      | Bend |
|------------|-----------|------|------|
| 803.100.11 | 100       | PN12 | 11°  |
| 803.100.22 | 100       | PN12 | 22°  |
| 803.100.45 | 100       | PN12 | 45°  |
| 803.100.90 | 100       | PN12 | 90°  |
| 803.125.11 | 125       | PN12 | 11°  |
| 803.125.22 | 125       | PN12 | 22°  |
| 803.125.45 | 125       | PN12 | 45°  |
| 803.125.90 | 125       | PN12 | 90°  |
| 803.150.11 | 150       | PN12 | 11°  |
| 803.150.22 | 150       | PN12 | 22°  |
| 803.150.45 | 150       | PN12 | 45°  |
| 803.150.90 | 150       | PN12 | 90°  |
| 803.175.11 | 175       | PN12 | 11°  |
| 803.175.22 | 175       | PN12 | 22°  |
| 803.175.45 | 175       | PN12 | 45°  |
| 803.175.90 | 175       | PN12 | 90°  |
| 803.200.11 | 200       | PN12 | 11°  |
| 803.200.22 | 200       | PN12 | 22°  |
| 803.200.45 | 200       | PN12 | 45°  |
| 803.200.90 | 200       | PN12 | 90°  |
| 803.225.11 | 225       | PN9  | 11°  |
| 803.225.22 | 225       | PN9  | 22°  |
| 803.225.45 | 225       | PN9  | 45°  |
| 803.225.90 | 225       | PN9  | 90°  |
| 803.250.45 | 250       | PN9  | 45°  |
| 803.250.90 | 250       | PN9  | 90°  |
| 803.300.11 | 300       | PN9  | 11°  |
| 803.300.22 | 300       | PN9  | 22°  |
| 803.300.45 | 300       | PN9  | 45°  |
| 803.300.90 | 300       | PN9  | 90°  |

Continue to the next column.

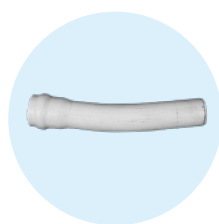
## FORMED



### Pressure DBL Coupler uPVC SCJ

810

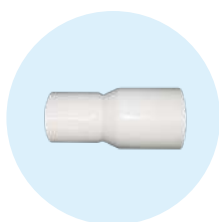
| Code               | Size (mm) | Type |
|--------------------|-----------|------|
| <b>810.125</b>     | 125       | PN12 |
| <b>810.150</b>     | 150       | PN12 |
| <b>810.155.150</b> | 155 . 150 | PN12 |
| <b>810.200</b>     | 200       | PN15 |
| <b>810.225</b>     | 225       | PN9  |
| <b>810.300I</b>    | 300       | PN9  |



### Pressure Swept Bend RRJ

Z803

| Code               | Size (mm) | Type | Bend |
|--------------------|-----------|------|------|
| <b>Z803.50.11</b>  | 50        | PN12 | 11°  |
| <b>Z803.50.22</b>  | 50        | PN12 | 22°  |
| <b>Z803.50.45</b>  | 50        | PN12 | 45°  |
| <b>Z803.50.90</b>  | 50        | PN12 | 90°  |
| <b>Z803.65.11</b>  | 65        | PN12 | 11°  |
| <b>Z803.65.22</b>  | 65        | PN12 | 22°  |
| <b>Z803.65.45</b>  | 65        | PN12 | 45°  |
| <b>Z803.65.90</b>  | 65        | PN12 | 90°  |
| <b>Z803.80.11</b>  | 80        | PN12 | 11°  |
| <b>Z803.80.22</b>  | 80        | PN12 | 22°  |
| <b>Z803.80.45</b>  | 80        | PN12 | 45°  |
| <b>Z803.80.90</b>  | 80        | PN12 | 90°  |
| <b>Z803.100.11</b> | 100       | PN12 | 11°  |
| <b>Z803.100.22</b> | 100       | PN12 | 22°  |
| <b>Z803.100.45</b> | 100       | PN12 | 45°  |
| <b>Z803.100.90</b> | 100       | PN12 | 90°  |
| <b>Z803.125.11</b> | 125       | PN12 | 11°  |
| <b>Z803.125.22</b> | 125       | PN12 | 22°  |
| <b>Z803.125.45</b> | 125       | PN12 | 45°  |
| <b>Z803.125.90</b> | 125       | PN12 | 90°  |
| <b>Z803.150.11</b> | 150       | PN12 | 11°  |
| <b>Z803.150.22</b> | 150       | PN12 | 22°  |
| <b>Z803.150.45</b> | 150       | PN12 | 45°  |
| <b>Z803.150.90</b> | 150       | PN12 | 90°  |
| <b>Z803.175.11</b> | 175       | PN12 | 11°  |
| <b>Z803.175.22</b> | 175       | PN12 | 22°  |
| <b>Z803.175.45</b> | 175       | PN12 | 45°  |
| <b>Z803.175.90</b> | 175       | PN12 | 90°  |
| <b>Z803.200.11</b> | 200       | PN12 | 11°  |
| <b>Z803.200.22</b> | 200       | PN12 | 22°  |
| <b>Z803.200.45</b> | 200       | PN12 | 45°  |
| <b>Z803.200.90</b> | 200       | PN12 | 90°  |



### Pressure SCJ Red Socket uPVC

823

| Code               | Size (mm) | Type |
|--------------------|-----------|------|
| <b>823.125.100</b> | 125 . 100 | PN12 |
| <b>823.150.100</b> | 150 . 100 | PN12 |
| <b>823.150.125</b> | 150 . 125 | PN12 |
| <b>823.175.150</b> | 175 . 150 | PN12 |
| <b>823.200.100</b> | 200 . 100 | PN12 |
| <b>823.200.150</b> | 200 . 150 | PN12 |
| <b>823.200.175</b> | 200 . 175 | PN12 |
| <b>823.225.150</b> | 225 . 150 | PN9  |
| <b>823.225.175</b> | 225 . 175 | PN9  |
| <b>823.225.200</b> | 225 . 200 | PN9  |
| <b>823.250.200</b> | 250 . 200 | PN9  |
| <b>823.300.200</b> | 300 . 200 | PN9  |
| <b>823.300.225</b> | 300 . 225 | PN9  |
| <b>823.300.250</b> | 300 . 250 | PN9  |

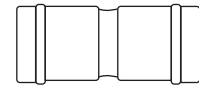
FORMED

FORMED / FABRICATED

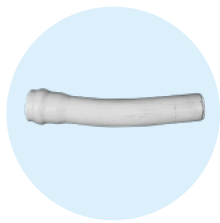
Coupler Double Order Code

Z 810 . 50 D

Diameter (ID mm)



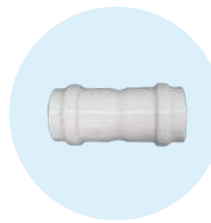
Diameter (ID mm)



Pressure Swept Bend RRJ

Z803

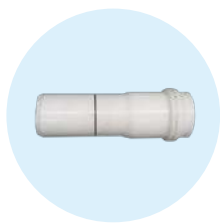
| Code        | Size (mm) | Type | Bend |
|-------------|-----------|------|------|
| Z803.225.11 | 225       | PN9  | 11°  |
| Z803.225.22 | 225       | PN9  | 22°  |
| Z803.225.45 | 225       | PN9  | 45°  |
| Z803.225.90 | 225       | PN9  | 90°  |
| Z803.300.11 | 300       | PN9  | 11°  |
| Z803.300.22 | 300       | PN9  | 22°  |
| Z803.300.45 | 300       | PN9  | 45°  |
| Z803.300.90 | 300       | PN9  | 90°  |
| Z803.375.11 | 375       | PN9  | 11°  |
| Z803.375.22 | 375       | PN9  | 22°  |
| Z803.375.45 | 375       | PN9  | 45°  |
| Z803.375.90 | 375       | PN9  | 90°  |



Pressure Coupler Double uPVC RRJ

Z810

| Code         | Size (mm) | Type | Bend         |
|--------------|-----------|------|--------------|
| 806.150      | 150       | PN12 | Faucet       |
| 813.150      | 150       | PN12 | Valve Socket |
| Z810.50D     | 50        | PN12 |              |
| Z810.65D     | 65        | PN12 |              |
| Z810.80D     | 80        | PN12 |              |
| Z810.100D    | 100       | PN12 |              |
| Z810.125D    | 125       | PN12 |              |
| Z810.150D    | 150       | PN12 |              |
| Z810.155.150 | 155       | PN12 |              |
| Z810.175D    | 175       | PN12 |              |
| Z810.200D    | 200       | PN12 |              |
| Z810.225D    | 225       | PN9  |              |
| Z810.300D    | 300       | PN9  |              |
| Z810.375D    | 375       | PN9  |              |



Pressure Coupler Single RRJ

Z810

| Code     | Size (mm) | Type |
|----------|-----------|------|
| Z810.50  | 50        | PN12 |
| Z810.65  | 65        | PN12 |
| Z810.80  | 80        | PN12 |
| Z810.100 | 100       | PN12 |
| Z810.125 | 125       | PN12 |
| Z810.150 | 150       | PN12 |
| Z810.175 | 175       | PN12 |
| Z810.200 | 200       | PN12 |
| Z810.225 | 225       | PN9  |
| Z810.300 | 300       | PN9  |
| Z810.375 | 375       | PN9  |



Flange Adaptors RRJ

Z826

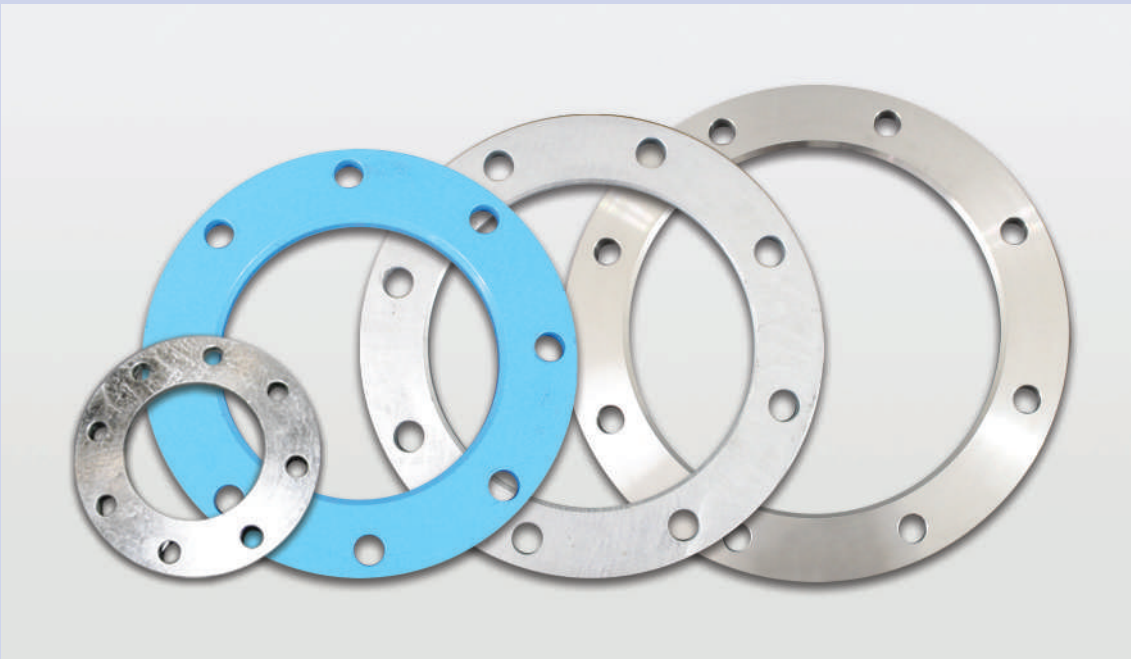
| Code     | Size (mm) |
|----------|-----------|
| Z826.50  | 50        |
| Z826.65  | 65        |
| Z826.80  | 80        |
| Z826.100 | 100       |
| Z826.150 | 150       |
| Z826.200 | 200       |

# BACKING RINGS RANGE

# BACKING RINGS RANGE

## PRODUCTS

**56-57** Pressure PVC | PE Galv  
PE Nylon Coated Steel  
PE Rings SS

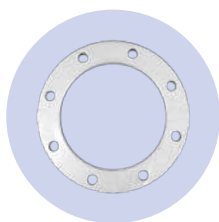
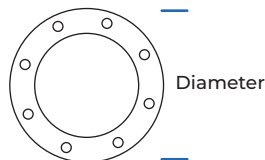


### Code breakdown

PVC Backing Ring Order Code

8 2 7 . 5 0

Diameter (mm)



### Pressure PVC Backing Ring

827

| Code    | Size (mm) | Range       |
|---------|-----------|-------------|
| 827.50  | 50        | Table E     |
| 827.65  | 65        | Table E     |
| 827.80  | 80        | Table E     |
| 827.100 | 100       | Table E     |
| 827.125 | 125       | Table E     |
| 827.150 | 150       | Table E     |
| 827.175 | 175       | Table E     |
| 827.200 | 200       | Table E     |
| 827.225 | 225       | Table E     |
| 827.250 | 250       | Table E     |
| 827.300 | 300       | Table E     |
| 827.375 | 375       | AS4087 PN16 |



### PE Backing Ring Galv

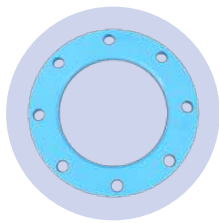
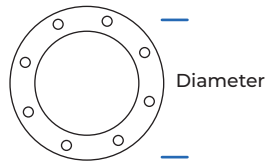
PE1227

| Code         | Size (mm) | Range                   |
|--------------|-----------|-------------------------|
| PE1227.50    | 50        | Table E                 |
| PE1227.63    | 63        | AS4087 PN16 - Table D/E |
| PE1227.75    | 75        | AS4087 PN16 - Table D/E |
| PE1227.90    | 90        | AS4087 PN16 - Table D/E |
| PE1227.90HYD | 90        | Hydrant                 |
| PE1227.110   | 110       | AS4087 PN16 - Table D/E |
| PE1227.125   | 125       | AS4087 PN16 - Table D/E |
| PE1227.140   | 140       | AS4087 PN16 - Table D/E |
| PE1227.160   | 160       | AS4087 PN16 - Table D/E |
| PE1227.180   | 180       | AS4087 PN16 - Table D/E |
| PE1227.200   | 200       | AS4087 PN16 - Table D/E |
| PE1227.225   | 225       | AS4087 PN16 - Table D/E |
| PE1227.250D  | 250       | AS4087 PN16 - Table D   |
| PE1227.250E  | 250       | Table E                 |
| PE1227.280D  | 280       | AS4087 PN16 - Table D   |
| PE1227.280E  | 280       | Table E                 |
| PE1227.315   | 315       | AS4087 PN16 - Table D/E |
| PE1227.355   | 355       | AS4087 PN16             |
| PE1227.375   | 375       | AS4087 PN16             |
| PE1227.400   | 400       | AS4087 PN16 - Table D/E |
| PE1227.450D  | 450       | AS4087 - Table D        |
| PE1227.450E  | 450       | Table E                 |
| PE1227.500   | 500       | AS4087 PN16 - Table D/E |
| PE1227.560   | 560       | Table D/E               |
| PE1227.630   | 630       | AS4087 PN16 - Table D/E |
| PE1227.710   | 710       | AS4087 PN16 - Table D/E |
| PE1227.800   | 800       | AS4087 PN16 - Table D/E |
| PE1227.900   | 900       | AS4087 PN16 - Table D/E |
| PE1227.1000  | 1000      | AS4087 PN16 - Table D/E |
| PE1227.1200  | 1200      | AS4087 PN16 - Table D/E |



PE Backing Ring Order Code

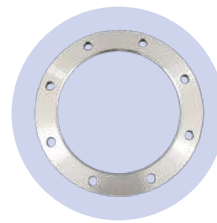
PE1227.63N  
Diameter (mm)



### PE Nylon Coated Steel Backing Ring



| Code          | Size (mm) | Range                   |
|---------------|-----------|-------------------------|
| PE1227.63N    | 63        | AS4087 PN16 - Table D/E |
| PE1227.90N    | 90        | AS4087 PN16 - Table D/E |
| PE1227.90NHVD | 90        | Hydrant                 |
| PE1227.110N   | 110       | AS4087 PN16 - Table D/E |
| PE1227.125N   | 125       | AS4087 PN16 - Table D/E |
| PE1227.160N   | 160       | AS4087 PN16 - Table D/E |
| PE1227.180N   | 180       | AS4087 PN16 - Table D/E |
| PE1227.200N   | 200       | AS4087 PN16 - Table D/E |
| PE1227.225N   | 225       | AS4087 PN16 - Table D   |
| PE1227.250ND  | 250       | AS4087 PN16 - Table D   |
| PE1227.250NE  | 250       | Table E                 |
| PE1227.280ND  | 280       | AS4087 PN16 - Table D   |
| PE1227.280NE  | 280       | Table E                 |
| PE1227.315N   | 315       | AS4087 PN16 - Table D/E |
| PE1227.355N   | 355       | AS4087 PN16             |
| PE1227.375N   | 375       | AS4087 PN16             |
| PE1227.400N   | 400       | AS4087 PN16 - Table D/E |
| PE1227.450ND  | 450       | AS4087 PN16 - Table D   |
| PE1227.450NE  | 450       | Table E                 |
| PE1227.500N   | 500       | AS4087 PN16 - Table D/E |
| PE1227.630N   | 630       | AS4087 PN16 - Table D/E |



### PE Backing Rings SS 316



| Code           | Size (mm) | Type                    | Range |
|----------------|-----------|-------------------------|-------|
| PE1227.63SS    | 63        | AS4087 PN16 - Table D/E |       |
| PE1227.75SS    | 75        | AS4087 PN16 - Table D/E |       |
| PE1227.90HYDSS | 90        | Hydrant                 |       |
| PE1227.90SS    | 90        | AS4087 PN16 - Table D/E |       |
| PE1227.110SS   | 110       | AS4087 PN16 - Table D/E |       |
| PE1227.125SS   | 125       | AS4087 PN16 - Table D/E |       |
| PE1227.140SS   | 140       | AS4087 PN16 - Table D/E |       |
| PE1227.160SS   | 160       | AS4087 PN16 - Table D/E |       |
| PE1227.180SS   | 180       | AS4087 PN16 - Table D/E |       |
| PE1227.200SS   | 200       | AS4087 PN16 - Table D/E |       |
| PE1227.225SS   | 225       | AS4087 PN16 - Table D   |       |
| PE1227.250DSS  | 250       | AS4087 PN16 - Table D   |       |
| PE1227.250ESS  | 250       | Table E                 |       |
| PE1227.280DSS  | 280       | AS4087 PN16 - Table D   |       |
| PE1227.280ESS  | 280       | Table E                 |       |
| PE1227.315SS   | 315       | AS4087 PN16 - Table D/E |       |
| PE1227.355SS   | 355       | AS4087 PN16             |       |
| PE1227.375SS   | 375       | AS4087 PN16             |       |
| PE1227.400SS   | 400       | AS4087 PN16 - Table D/E |       |
| PE1227.450DSS  | 450       | AS4087 PN16 - Table D   |       |
| PE1227.450ESS  | 450       | Table E                 |       |
| PE1227.500SS   | 500       | AS4087 PN16 - Table D/E |       |
| PE1227.560SS   | 560       | Table D/E               |       |
| PE1227.630SS   | 630       | AS4087 PN16 - Table D/E |       |
| PE1227.710SS   | 710       | AS4087 PN16 - Table D/E |       |
| PE1227.800SS   | 800       | AS4087 PN16 - Table D/E |       |
| PE1227.900SS   | 900       | AS4087 PN16 - Table D/E |       |
| PE1227.1000SS  | 1000      | AS4087 PN16 - Table D/E |       |
| PE1227.1200SS  | 1200      | AS4087 PN16 - Table D/E |       |

# EF FITTINGS RANGE

# EF FITTINGS RANGE

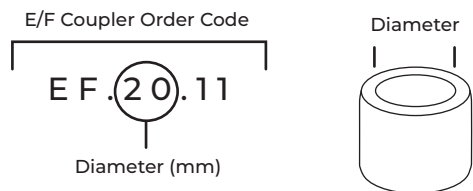
## FITTINGS

60-63 Couplers | Elbows | Tees  
Saddles | Reducers | Caps



# FITTINGS

## Code breakdown



Depending on the type of product, the following illustrations explain what the code numbers mean.



### PE E/F Coupler



| Code         | Size (mm) | Type        |
|--------------|-----------|-------------|
| EF.20.11     | 20        | SDR11       |
| EF.25.11     | 25        | SDR11       |
| EF.32.11     | 32        | SDR11       |
| EF.40.11.17  | 40        | SDR11/SDR17 |
| EF.50.11.17  | 50        | SDR11/SDR17 |
| EF.63.11.17  | 63        | SDR11/SDR17 |
| EF.75.11.17  | 75        | SDR11/SDR17 |
| EF.90.11.17  | 90        | SDR11/SDR17 |
| EF.110.11.17 | 110       | SDR11/SDR17 |
| EF.125.11.17 | 125       | SDR11/SDR17 |
| EF.140.11.17 | 140       | SDR11/SDR17 |
| EF.160.11.17 | 160       | SDR11/SDR17 |
| EF.180.11.17 | 180       | SDR11/SDR17 |
| EF.200.11.17 | 200       | SDR11/SDR17 |
| EF.225.11.17 | 225       | SDR11/SDR17 |
| EF.250.11.17 | 250       | SDR11/SDR17 |
| EF.280.11.17 | 280       | SDR11/SDR17 |
| EF.315.11.17 | 315       | SDR11/SDR17 |
| EF.355.11.17 | 355       | SDR11/SDR17 |
| EF.355.17    | 355       | SDR11       |
| EF.400.11    | 400       | SDR11       |
| EF.400.11.17 | 400       | SDR11/SDR17 |
| EF.400.17    | 400       | SDR17       |
| EF.450.11    | 450       | SDR11       |
| EF.450.17    | 450       | SDR17       |
| EF.500.11    | 500       | SDR11       |



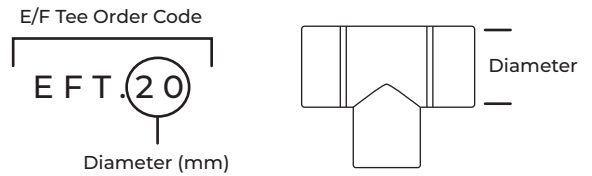
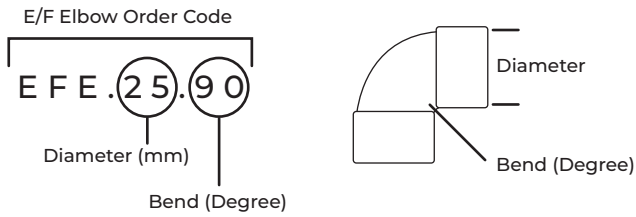
### PE E/F Coupler



| Code       | Size (mm) | Type  |
|------------|-----------|-------|
| EF.500.17  | 500       | SDR17 |
| EF.560.11  | 560       | SDR11 |
| EF.560.17  | 560       | SDR17 |
| EF.630.11  | 630       | SDR11 |
| EF.630.17  | 630       | SDR17 |
| EF.710.11  | 710       | SDR11 |
| EF.710.17  | 710       | SDR17 |
| EF.800.11  | 800       | SDR11 |
| EF.800.17  | 800       | SDR17 |
| EF.900.11  | 900       | SDR11 |
| EF.900.17  | 900       | SDR17 |
| EF.1000.11 | 1000      | SDR11 |
| EF.1000.17 | 1000      | SDR17 |
| EF.1200.17 | 1200      | SDR17 |
| EF.1400.17 | 1400      | SDR17 |

Continue to the next column.

# FITTINGS



## E/F Elbows



| Code         | Size (mm) | Type        | Bend |
|--------------|-----------|-------------|------|
| EFE.25.90    | 25        | SDR11/SDR17 | 90°  |
| EFE.32.45    | 32        | SDR11/SDR17 | 45°  |
| EFE.32.90    | 32        | SDR11/SDR17 | 90°  |
| EFE.40.45    | 40        | SDR11/SDR17 | 45°  |
| EFE.40.90    | 40        | SDR11/SDR17 | 90°  |
| EFE.50.45    | 50        | SDR11/SDR17 | 45°  |
| EFE.50.90    | 50        | SDR11/SDR17 | 90°  |
| EFE.63.45    | 63        | SDR11/SDR17 | 45°  |
| EFE.63.90    | 63        | SDR11/SDR17 | 90°  |
| EFE.75.45    | 75        | SDR11/SDR17 | 45°  |
| EFE.75.90    | 75        | SDR11/SDR17 | 90°  |
| EFE.90.45    | 90        | SDR11/SDR17 | 45°  |
| EFE.90.90    | 90        | SDR11/SDR17 | 90°  |
| EFE.110.22   | 110       | SDR11/SDR17 | 22°  |
| EFE.110.45   | 110       | SDR11/SDR17 | 45°  |
| EFE.110.90   | 110       | SDR11/SDR17 | 90°  |
| EFE.125.45   | 125       | SDR11/SDR17 | 45°  |
| EFE.125.90   | 125       | SDR11/SDR17 | 90°  |
| EFE.160.45   | 160       | SDR11/SDR17 | 45°  |
| EFE.160.90   | 160       | SDR11/SDR17 | 90°  |
| EFE.180.22.5 | 180       | SDR11/SDR17 | 22°  |
| EFE.180.45   | 180       | SDR11/SDR17 | 45°  |
| EFE.180.90   | 180       | SDR11/SDR17 | 90°  |
| EFE.200.45   | 200       | SDR11/SDR17 | 45°  |
| EFE.200.90   | 200       | SDR11/SDR17 | 90°  |
| EFE.225.45   | 225       | SDR11/SDR17 | 45°  |
| EFE.225.90   | 225       | SDR11/SDR17 | 90°  |
| EFE.250.45   | 250       | SDR11/SDR17 | 45°  |
| EFE.250.90   | 250       | SDR11/SDR17 | 90°  |

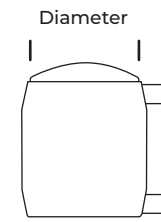
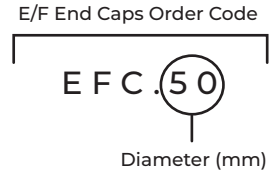
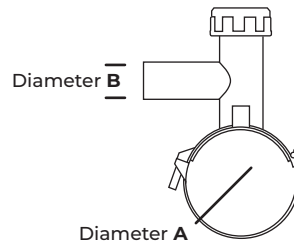
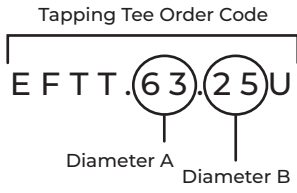


## PE E/F Tees



| Code    | Size (mm) | Type  |
|---------|-----------|-------|
| EFT.20  | 20        | SDR11 |
| EFT.25  | 25        | SDR11 |
| EFT.32  | 32        | SDR11 |
| EFT.40  | 40        | SDR11 |
| EFT.50  | 50        | SDR11 |
| EFT.63  | 63        | SDR11 |
| EFT.75  | 75        | SDR11 |
| EFT.90  | 90        | SDR11 |
| EFT.110 | 110       | SDR11 |
| EFT.125 | 125       | SDR11 |
| EFT.160 | 160       | SDR11 |
| EFT.180 | 180       | SDR11 |
| EFT.250 | 250       | SDR11 |

FITTINGS



PE E/F Tapping Tees



| Code         | Size (mm) | Type                             | Bend |
|--------------|-----------|----------------------------------|------|
| EFTT.63.25U  | 63 . 25   | Tapping Tee with underpart SDR11 | 90°  |
| EFTT.63.32U  | 63 . 32   | Tapping Tee with underpart SDR11 | 90°  |
| EFTT.110.32U | 110 . 32  | Tapping Tee with underpart SDR11 | 90°  |
| EFTT.125.25U | 125 . 25  | Tapping Tee with underpart SDR11 | 90°  |
| EFTT.125.32U | 125 . 32  | Tapping Tee with underpart SDR11 | 90°  |
| EFTT.125.63U | 125 . 63  | Tapping Tee with underpart SDR11 | 90°  |
| EFTT.160.63U | 160 . 63  | Tapping Tee with underpart SDR11 | 90°  |
| EFTT.180.25U | 180 . 25  | Tapping Tee with underpart SDR11 | 90°  |
| EFTT.180.32U | 180 . 32  | Tapping Tee with underpart SDR11 | 90°  |
| EFTT.180.63U | 180 . 63  | Tapping Tee with underpart SDR11 | 90°  |
| EFTT.200.63U | 200 . 63  | Tapping Tee with underpart SDR11 | 90°  |
| EFTT.225.32U | 225 . 32  | Tapping Tee with underpart SDR11 | 90°  |
| EFTT.200.63U | 200 . 63  | Tapping Tee with underpart SDR11 | 90°  |
| EFTT.250.25  | 250 . 25  | Tapping Tee SDR11                | 90°  |
| EFTT.250.32  | 250 . 32  | Tapping Tee SDR11                | 90°  |
| EFTT.250.63  | 250 . 63  | Tapping Tee SDR11                | 90°  |
| EFTT.315.32  | 315 . 32  | Tapping Tee SDR11                | 90°  |



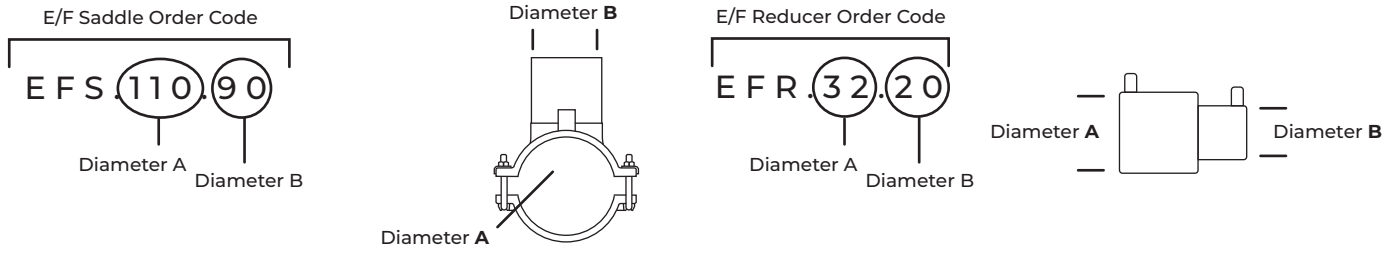
PE E/F End Caps



| Code    | Size (mm) | Type  |
|---------|-----------|-------|
| EFC.50  | 50        | SDR11 |
| EFC.63  | 63        | SDR11 |
| EFC.90  | 90        | SDR11 |
| EFC.110 | 110       | SDR11 |
| EFC.125 | 125       | SDR11 |
| EFC.160 | 160       | SDR11 |
| EFC.180 | 180       | SDR11 |



# FITTINGS



## PE E/F Saddles



| Code                  | Size (mm)      | Type                  | Bend |
|-----------------------|----------------|-----------------------|------|
| <b>EFFLEXREST</b>     |                | Flex Restraint        |      |
| <b>EFS.110.90</b>     | 110 . 90       | Saddle                | 90°  |
| <b>EFS.125.40U</b>    | 125 . 40       | Saddle with underpart | 90°  |
| <b>EFS.125.63U</b>    | 125 . 63       | Saddle with underpart | 90°  |
| <b>EFS.160.110</b>    | 160 . 110      | Saddle                | 90°  |
| <b>EFS.160.63U</b>    | 160 . 63       | Saddle with underpart | 90°  |
| <b>EFS.180.100PVC</b> | 180 . 100      | Saddle                | 90°  |
| <b>EFS.180.110</b>    | 180 . 110      | Saddle                | 90°  |
| <b>EFS.180.125</b>    | 180 . 125      | Saddle                | 90°  |
| <b>EFS.180.63</b>     | 180 . 63       | Saddle                | 90°  |
| <b>EFS.180.63U</b>    | 180 . 63       | Saddle with underpart | 90°  |
| <b>EFS.200.125</b>    | 200/225 . 125  | Saddle                | 90°  |
| <b>EFS.200.63U</b>    | 200 . 63       | Saddle with underpart | 90°  |
| <b>EFS.250.125</b>    | 250/280 . 125  | Saddle                | 90°  |
| <b>EFS.250.63</b>     | 250 X 63 PE100 | Saddle                | 90°  |



## PE E/F Reducers



| Code             | Size (mm) | Type  |
|------------------|-----------|-------|
| <b>EFR.32.20</b> | 32 . 20   | SDR11 |
| <b>EFR.32.25</b> | 50 . 25   | SDR11 |
| <b>EFR.50.32</b> | 50 . 32   | SDR11 |
| <b>EFR.63.32</b> | 63 . 32   | SDR11 |
| <b>EFR.63.40</b> | 63 . 40   | SDR11 |
| <b>EFR.63.50</b> | 63 . 50   | SDR11 |
| <b>EFR.75.63</b> | 75 . 63   | SDR11 |



## PE E/F Reducers



| Code               | Size (mm) | Type  |
|--------------------|-----------|-------|
| <b>EFR.90.63</b>   | 90 . 63   | SDR11 |
| <b>EFR.110.63</b>  | 110 . 63  | SDR11 |
| <b>EFR.110.90</b>  | 110 . 90  | SDR11 |
| <b>EFR.125.90</b>  | 125 . 90  | SDR11 |
| <b>EFR.160.110</b> | 160 . 110 | SDR11 |
| <b>EFR.180.125</b> | 180 . 125 | SDR11 |

Continue to the next column.



# PE FITTINGS RANGE

## PE FITTINGS RANGE

### MANHOLE CONNECTORS

**66** Connector Auckland

### MOULDED: SEWER/STORMWATER

**67-68** Bend Ext Legs | Tees

### FABRICATED: SEWER/STORMWATER

**69-72** Bends | Wye | Tees | Adapters

### MOULDED: WATERMAIN

**73-76** Bend Ext Legs | Tees | Caps  
Stub Flanges | Stub EXT Legs  
Adapters | Reducers

### MOULDED/FABRICATED: WATERMAIN

**77-78** Reducers | Tees | End Caps

### FABRICATED: WATERMAIN

**79-80** Bends | Stub Flanges  
Slim Flanges

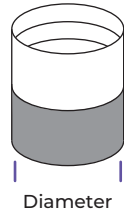
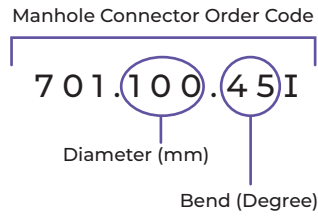
### FORMING

**81** Swept Bends



## MANHOLE CONNECTORS

### Code breakdown



Depending on the type of product, the following illustrations explain what the code numbers mean.

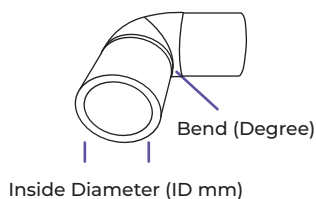
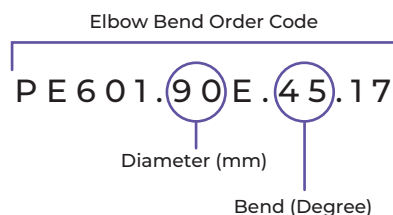


### PE Manhole Connector Auckland



| Code      | Size (mm) |
|-----------|-----------|
| PEMCA.75  | 75        |
| PEMCA.90  | 90        |
| PEMCA.110 | 110       |
| PEMCA.125 | 125       |
| PEMCA.160 | 160       |
| PEMCA.180 | 180       |
| PEMCA.200 | 200       |
| PEMCA.225 | 225       |
| PEMCA.250 | 250       |
| PEMCA.280 | 280       |
| PEMCA.315 | 315       |
| PEMCA.355 | 355       |
| PEMCA.400 | 400       |
| PEMCA.450 | 450       |
| PEMCA.500 | 500       |
| PEMCA.560 | 560       |
| PEMCA.630 | 630       |
| PEMCA.710 | 710       |
| PEMCA.800 | 800       |
| PEMCA.900 | 900       |

## MOULDED: SEWER/STORMWATER

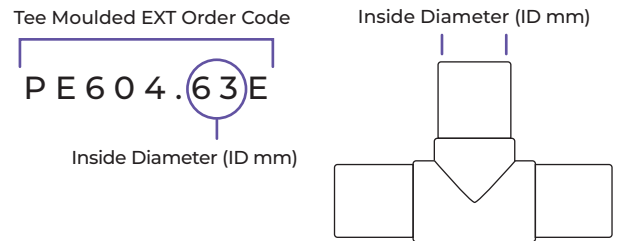
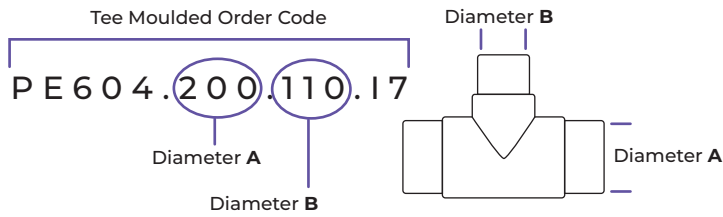


## PE Moulded Elbow Bend Ext Leg SDR17

PE601

| Code             | Size (mm) | Type               | Bend |
|------------------|-----------|--------------------|------|
| PE601.90E.45.17  | 90        | Elbow Extended Leg | 45°  |
| PE601.90E.90.17  | 90        | Elbow Extended Leg | 90°  |
| PE601.110E.45.17 | 110       | Elbow Extended Leg | 45°  |
| PE601.125E.45.17 | 125       | Elbow Extended Leg | 45°  |
| PE601.125E.90.17 | 125       | Elbow Extended Leg | 90°  |
| PE601.140E.45.17 | 140       | Elbow Extended Leg | 45°  |
| PE601.140E.90.17 | 140       | Elbow Extended Leg | 90°  |
| PE601.160E.45.17 | 160       | Elbow Extended Leg | 45°  |
| PE601.160E.90.17 | 160       | Elbow Extended Leg | 90°  |
| PE601.180E.45.17 | 180       | Elbow Extended Leg | 45°  |
| PE601.180E.90.17 | 180       | Elbow Extended Leg | 90°  |
| PE601.200.90.17  | 200       | Elbow              | 90°  |
| PE601.225.90.17  | 225       | Elbow              | 90°  |
| PE601.250E.45.17 | 250       | Elbow Extended Leg | 45°  |
| PE601.250E.90.17 | 250       | Elbow Extended Leg | 90°  |
| PE601.280.90.17  | 280       | Elbow              | 90°  |
| PE601.280E.45.17 | 280       | Elbow Extended Leg | 45°  |
| PE601.280E.90.17 | 280       | Elbow Extended Leg | 90°  |
| PE601.315E.45.17 | 315       | Elbow Extended Leg | 45°  |
| PE601.315E.90.17 | 315       | Elbow Extended Leg | 90°  |
| PE601.400.45.17  | 400       | Elbow              | 45°  |
| PE601.400.90.17  | 400       | Elbow              | 90°  |
| PE601.450.45.17  | 450       | Elbow              | 45°  |
| PE601.450.90.17  | 450       | Elbow              | 90°  |
| PE601.500.45.17  | 500       | Elbow              | 45°  |
| PE601.500.90.17  | 500       | Elbow              | 90°  |

## MOULDED: SEWER/STORMWATER



PE Tee Moulded SDR17

PE604

| Code             | Size (mm) |
|------------------|-----------|
| PE604.200.17     | 200       |
| PE604.200.110.17 | 200.110   |
| PE604.225.17     | 225       |
| PE604.250.17     | 250       |
| PE604.280.17     | 280       |
| PE604.315.17     | 315       |
| PE604.400.17     | 400       |
| PE604.450.17     | 450       |
| PE604.500.17     | 500       |
| PE604.560.17     | 560       |
| PE604.630.17     | 630       |



PE Tee Moulded EXT Leg SDR17

PE604

| Code           | Size (mm) |
|----------------|-----------|
| PE604.63E      | 63        |
| PE604.75E      | 75        |
| PE604.90E      | 90        |
| PE604.110E     | 110       |
| PE604.125E     | 125       |
| PE604.140E     | 140       |
| PE604.160.110E | 160 . 110 |
| PE604.160E     | 160       |
| PE604.180E     | 180       |
| PE604.200E     | 200       |
| PE604.225E     | 225       |
| PE604.250E     | 250       |
| PE604.280E     | 280       |
| PE604.315E     | 315       |



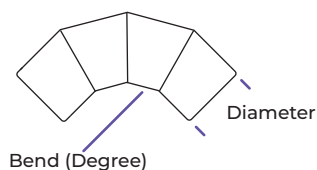
## FABRICATED: SEWER/STORMWATER

Segmented Bend Order Code

PE601.90.45

Diameter  
(mm)

Bend (Degree)

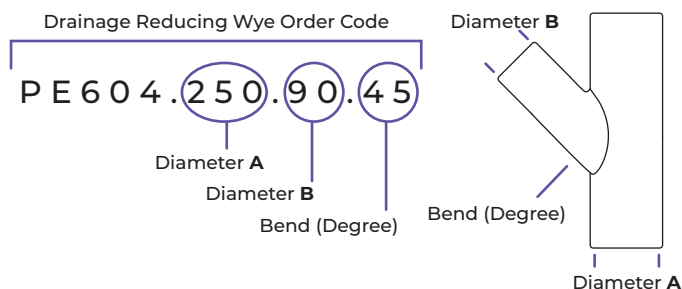
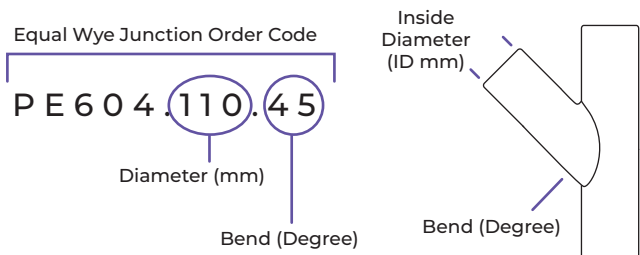


## PE Drainage Segmented Bend SDR17

PE601

| Code         | Size (mm) | Type                        | Bend |
|--------------|-----------|-----------------------------|------|
| PE601.90.45  | 90        | 1 Segment Bend for Drainage | 45°  |
| PE601.90.90  | 90        | 2 Segment Bend for Drainage | 90°  |
| PE601.110.45 | 110       | 1 Segment Bend for Drainage | 45°  |
| PE601.110.90 | 110       | 2 Segment Bend for Drainage | 90°  |
| PE601.125.45 | 125       | 1 Segment Bend for Drainage | 45°  |
| PE601.125.90 | 125       | 2 Segment Bend for Drainage | 90°  |
| PE601.160.45 | 160       | 1 Segment Bend for Drainage | 45°  |
| PE601.160.90 | 160       | 2 Segment Bend for Drainage | 90°  |
| PE601.180.45 | 180       | 1 Segment Bend for Drainage | 45°  |
| PE601.180.90 | 180       | 2 Segment Bend for Drainage | 90°  |
| PE601.200.45 | 200       | 1 Segment Bend for Drainage | 45°  |
| PE601.200.90 | 200       | 2 Segment Bend for Drainage | 90°  |
| PE601.225.45 | 225       | 1 Segment Bend for Drainage | 45°  |
| PE601.225.90 | 225       | 2 Segment Bend for Drainage | 90°  |
| PE601.250.45 | 250       | 1 Segment Bend for Drainage | 45°  |
| PE601.250.90 | 250       | 2 Segment Bend for Drainage | 90°  |
| PE601.280.45 | 280       | 1 Segment Bend for Drainage | 45°  |
| PE601.280.90 | 280       | 2 Segment Bend for Drainage | 90°  |
| PE601.315.45 | 315       | 1 Segment Bend for Drainage | 45°  |
| PE601.315.90 | 315       | 2 Segment Bend for Drainage | 90°  |
| PE601.355.45 | 355       | 1 Segment Bend for Drainage | 45°  |
| PE601.355.90 | 355       | 2 Segment Bend for Drainage | 90°  |
| PE601.400.45 | 400       | 1 Segment Bend for Drainage | 45°  |
| PE601.400.90 | 400       | 2 Segment Bend for Drainage | 90°  |
| PE601.450.45 | 450       | 1 Segment Bend for Drainage | 45°  |
| PE601.450.90 | 450       | 2 Segment Bend for Drainage | 90°  |
| PE601.500.45 | 500       | 1 Segment Bend for Drainage | 45°  |
| PE601.500.90 | 500       | 2 Segment Bend for Drainage | 90°  |
| PE601.560.45 | 560       | 1 Segment Bend for Drainage | 45°  |
| PE601.560.90 | 560       | 2 Segment Bend for Drainage | 90°  |
| PE601.630.45 | 630       | 1 Segment Bend for Drainage | 45°  |
| PE601.630.90 | 630       | 2 Segment Bend for Drainage | 90°  |

## FABRICATED: SEWER/STORMWATER



### PE Drainage Equal Wye Junction SDR17 **PE604**

| Code         | Size (mm) | Bend |
|--------------|-----------|------|
| PE604.110.45 | 110       | 45°  |
| PE604.125.45 | 124       | 45°  |
| PE604.160.45 | 160       | 45°  |
| PE604.180.45 | 180       | 45°  |
| PE604.200.45 | 200       | 45°  |
| PE604.225.45 | 225       | 45°  |
| PE604.250.45 | 250       | 45°  |
| PE604.280.45 | 280       | 45°  |
| PE604.315.45 | 315       | 45°  |



### PE Drainage Reducing Wye SDR17 **PE604**

| Code             | Size (mm) | Bend |
|------------------|-----------|------|
| PE604.250.90.45  | 250 . 90  | 45°  |
| PE604.250.110.45 | 250 . 110 | 45°  |
| PE604.250.125.45 | 250 . 125 | 45°  |
| PE604.250.160.45 | 250 . 160 | 45°  |
| PE604.250.180.45 | 250 . 180 | 45°  |
| PE604.280.90.45  | 280 . 90  | 45°  |
| PE604.280.110.45 | 280 . 110 | 45°  |
| PE604.280.125.45 | 280 . 125 | 45°  |
| PE604.280.160.45 | 280 . 160 | 45°  |
| PE604.280.180.45 | 280 . 180 | 45°  |
| PE604.280.200.45 | 280 . 200 | 45°  |
| PE604.315.90.45  | 315 . 90  | 45°  |
| PE604.315.110.45 | 315 . 110 | 45°  |
| PE604.315.125.45 | 315 . 125 | 45°  |
| PE604.315.160.45 | 315 . 160 | 45°  |
| PE604.315.180.45 | 315 . 180 | 45°  |
| PE604.315.200.45 | 315 . 200 | 45°  |
| PE604.315.225.45 | 315 . 225 | 45°  |
| PE604.355.90.45  | 355 . 90  | 45°  |
| PE604.355.110.45 | 355 . 110 | 45°  |
| PE604.355.125.45 | 355 . 125 | 45°  |
| PE604.355.160.45 | 355 . 160 | 45°  |
| PE604.355.180.45 | 355 . 180 | 45°  |
| PE604.355.200.45 | 355 . 200 | 45°  |
| PE604.355.225.45 | 355 . 225 | 45°  |
| PE604.355.250.45 | 355 . 250 | 45°  |
| PE604.355.250.45 | 355 . 250 | 45°  |



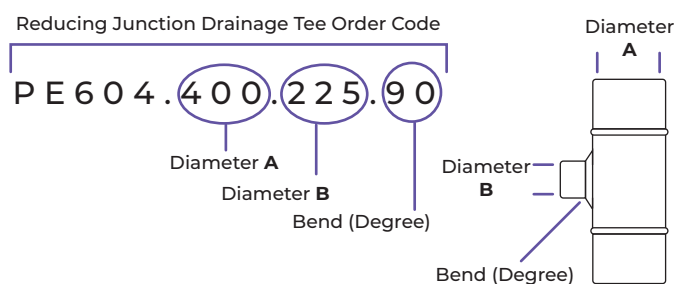
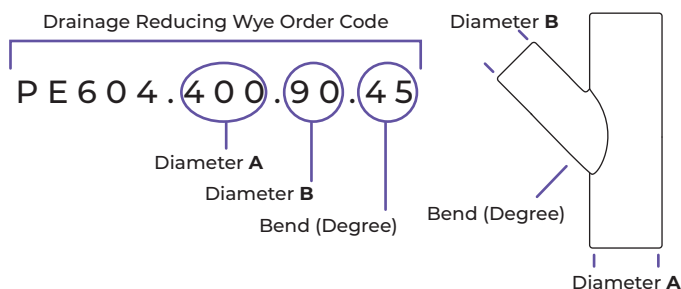
### PE Drainage Reducing Wye SDR17 **PE604**

| Code             | Size (mm) | Bend |
|------------------|-----------|------|
| PE604.125.90.45  | 125 . 90  | 45°  |
| PE604.160.90.45  | 160 . 90  | 45°  |
| PE604.160.110.45 | 160 . 110 | 45°  |
| PE604.180.90.45  | 180 . 90  | 45°  |
| PE604.180.110.45 | 180 . 110 | 45°  |
| PE604.180.125.45 | 180 . 125 | 45°  |
| PE604.200.90.45  | 200 . 90  | 45°  |
| PE604.200.110.45 | 200 . 110 | 45°  |
| PE604.200.125.45 | 200 . 125 | 45°  |
| PE604.225.90.45  | 200 . 90  | 45°  |
| PE604.225.110.45 | 225 . 110 | 45°  |
| PE604.225.125.45 | 225 . 125 | 45°  |
| PE604.225.160.45 | 225 . 160 | 45°  |

Continue to the next column.

Continue to the next column.

FABRICATED: SEWER/STORMWATER



PE Drainage Reducing Wye SDR17 **PE604**

| Code             | Size (mm) | Bend |
|------------------|-----------|------|
| PE604.400.90.45  | 400 . 90  | 45°  |
| PE604.400.110.45 | 400 . 110 | 45°  |
| PE604.400.125.45 | 400 . 125 | 45°  |
| PE604.400.160.45 | 400 . 160 | 45°  |
| PE604.400.180.45 | 400 . 180 | 45°  |
| PE604.400.200.45 | 400 . 200 | 45°  |
| PE604.400.225.45 | 400 . 225 | 45°  |
| PE604.400.250.45 | 400 . 250 | 45°  |
| PE604.400.280.45 | 400 . 280 | 45°  |
| PE604.450.90.45  | 450 . 90  | 45°  |
| PE604.450.110.45 | 450 . 110 | 45°  |
| PE604.450.125.45 | 450 . 125 | 45°  |
| PE604.450.160.45 | 450 . 160 | 45°  |
| PE604.450.180.45 | 450 . 180 | 45°  |
| PE604.450.200.45 | 450 . 200 | 45°  |
| PE604.450.225.45 | 450 . 225 | 45°  |
| PE604.450.250.45 | 450 . 250 | 45°  |
| PE604.450.280.45 | 450 . 280 | 45°  |
| PE604.450.315.45 | 450 . 315 | 45°  |



PE Reducing Junction Drainage Tee SDR17 **PE604**

| Code             | Size (mm) | Bend |
|------------------|-----------|------|
| PE604.125.90.90  | 125 . 90  | 90°  |
| PE604.160.110.90 | 160 . 110 | 90°  |
| PE604.160.125.90 | 160 . 125 | 90°  |
| PE604.160.90.90  | 160 . 90  | 90°  |
| PE604.180.110.90 | 180 . 110 | 90°  |
| PE604.180.125.90 | 180 . 125 | 90°  |
| PE604.180.90.90  | 180 . 90  | 90°  |
| PE604.200.110.90 | 200 . 110 | 90°  |
| PE604.200.125.90 | 200 . 125 | 90°  |
| PE604.200.160.90 | 200 . 160 | 90°  |
| PE604.200.90.90  | 200 . 90  | 90°  |
| PE604.225.110.90 | 225 . 110 | 90°  |
| PE604.225.125.90 | 225 . 125 | 90°  |
| PE604.225.160.90 | 225 . 160 | 90°  |
| PE604.225.180.90 | 225 . 180 | 90°  |
| PE604.225.90.90  | 225 . 90  | 90°  |
| PE604.250.110.90 | 250 . 110 | 90°  |
| PE604.250.125.90 | 250 . 125 | 90°  |
| PE604.250.180.90 | 250 . 180 | 90°  |
| PE604.250.200.90 | 250 . 200 | 90°  |
| PE604.250.90.90  | 250 . 90  | 90°  |
| PE604.280.110.90 | 280 . 110 | 90°  |
| PE604.280.125.90 | 280 . 125 | 90°  |
| PE604.280.160.90 | 280 . 160 | 90°  |
| PE604.280.180.90 | 280 . 180 | 90°  |



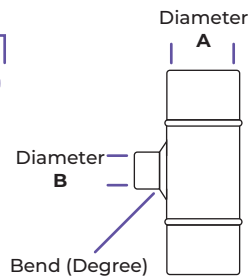
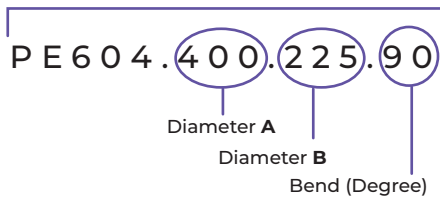
PE Drain Wye Suit PVC Junction for Drainage SDR17 **PE604**

| Code           | Size (mm) | Bend |
|----------------|-----------|------|
| PE604.160.110P | 160 . 110 | 45°  |

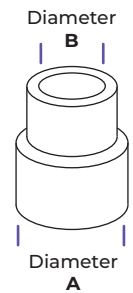
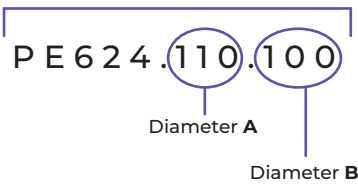
Continue to the next column.

## FABRICATED: SEWER/STORMWATER

Reducing Junction Drainage Tee Order Code



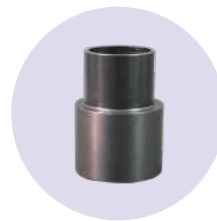
PE/PVC Drain Adapter Order Code



PE Reducing Junction Drainage Tee SDR17

PE604

| Code             | Size (mm) | Bend |
|------------------|-----------|------|
| PE604.400.225.90 | 400 . 225 | 90°  |
| PE604.400.250.90 | 400 . 250 | 90°  |
| PE604.400.280.90 | 400 . 280 | 90°  |
| PE604.400.315.90 | 400 . 315 | 90°  |
| PE604.400.90.90  | 400 . 90  | 90°  |
| PE604.450.110.90 | 450 . 110 | 90°  |
| PE604.450.125.90 | 450 . 125 | 90°  |
| PE604.450.160.90 | 450 . 160 | 90°  |
| PE604.450.180.90 | 450 . 180 | 90°  |
| PE604.450.200.90 | 450 . 200 | 90°  |
| PE604.450.225.90 | 450 . 225 | 90°  |
| PE604.450.250.90 | 450 . 250 | 90°  |
| PE604.450.280.90 | 450 . 280 | 90°  |
| PE604.450.315.90 | 450 . 315 | 90°  |
| PE604.450.355.90 | 450 . 355 | 90°  |
| PE604.450.90.90  | 450 . 90  | 90°  |

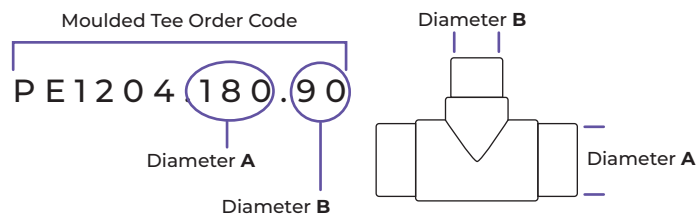
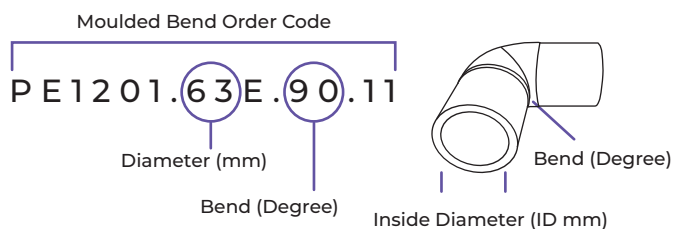


PE/PVC Drain Adapter SDR17

PE624

| Code          | Size (mm) |
|---------------|-----------|
| PE624.110.100 | 110 . 100 |
| PE624.125.100 | 125 . 100 |
| PE624.140.150 | 140 . 150 |
| PE624.160.150 | 160 . 150 |
| PE624.180.150 | 180 . 150 |
| PE624.200.175 | 200 . 175 |
| PE624.250.225 | 250 . 225 |

MOULDED: WATERMAIN



PE Moulded Bend  
Ext Leg SDR11

PE1201

| Code              | Size (mm) | Bend |
|-------------------|-----------|------|
| PE1201.63E.90.11  | 63        | 90°  |
| PE1201.75E.90.11  | 75        | 90°  |
| PE1201.90E.45.11  | 90        | 45°  |
| PE1201.90E.90.11  | 90        | 90°  |
| PE1201.110E.45.11 | 110       | 45°  |
| PE1201.110E.90.11 | 110       | 90°  |
| PE1201.125E.45.11 | 125       | 45°  |
| PE1201.125E.90.11 | 125       | 90°  |
| PE1201.140E.45.11 | 140       | 45°  |
| PE1201.140E.90.11 | 140       | 90°  |
| PE1201.160E.45.11 | 160       | 45°  |
| PE1201.160E.90.11 | 160       | 90°  |
| PE1201.180E.45.11 | 180       | 45°  |
| PE1201.180E.90.11 | 180       | 90°  |



PE Moulded Tee  
SDR11

PE1204

| Code              | Size (mm) |
|-------------------|-----------|
| PE1204.160.110.11 | 160 . 110 |
| PE1204.160.90E    | 160 . 90  |
| PE1204.180        | 180       |
| PE1204.180.90     | 180 . 90  |
| PE1204.180.90     | 180 . 90  |
| E1204.200         | 200       |
| PE1204.200.110.11 | 200 . 110 |
| PE1204.200.90E    | 200 . 90  |
| PE1204.225        | 225       |
| PE1204.250        | 250       |
| PE1204.250.110    | 250 . 110 |
| PE1204.250.90E    | 250 . 90  |
| PE1204.280        | 280       |
| PE1204.315        | 315       |
| PE1204.315.110    | 315 . 110 |
| PE1204.355        | 355       |
| PE1204.400        | 400       |
| PE1204.450        | 450       |
| PE1204.500        | 500       |



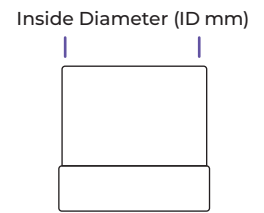
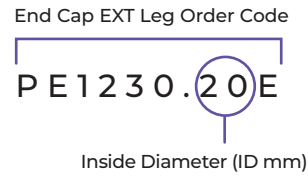
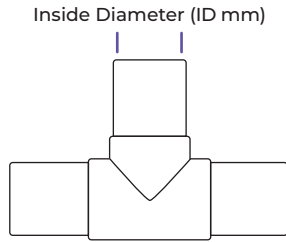
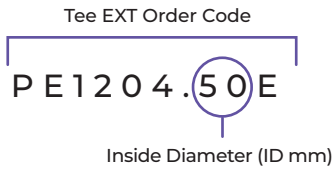
PE Moulded Tee  
SDR11

PE1204

| Code       | Size (mm) |
|------------|-----------|
| PE1204.63  | 63        |
| PE1204.75  | 75        |
| PE1204.90  | 90        |
| PE1204.110 | 110       |
| PE1204.125 | 125       |
| PE1204.140 | 140       |
| PE1204.160 | 160       |

Continue to the next column.

## MOULDED: WATERMAIN



### PE Tee EXT Leg SDR11

PE1204

| Code        | Size (mm) |
|-------------|-----------|
| PE1204.50E  | 50        |
| PE1204.75E  | 75        |
| PE1204.90E  | 90        |
| PE1204.110E | 110       |
| PE1204.125E | 125       |
| PE1204.140E | 140       |
| PE1204.160E | 160       |
| PE1204.180E | 180       |
| PE1204.200E | 200       |
| PE1204.225E | 225       |
| PE1204.250E | 250       |
| PE1204.280E | 280       |
| PE1204.315E | 315       |



### PE End Cap EXT Leg SDR11

PE1230

| Code        | Size (mm) |
|-------------|-----------|
| PE1230.20E  | 20        |
| PE1230.25E  | 25        |
| PE1230.32E  | 32        |
| PE1230.40E  | 40        |
| PE1230.50E  | 50        |
| PE1230.63E  | 63        |
| PE1230.75E  | 75        |
| PE1230.90E  | 90        |
| PE1230.110E | 110       |
| PE1230.125E | 125       |
| PE1230.140E | 140       |
| PE1230.160E | 160       |
| PE1230.180E | 180       |
| PE1230.200E | 200       |
| PE1230.225E | 225       |
| PE1230.250E | 250       |
| PE1230.280E | 280       |
| PE1230.315E | 315       |



### PE Butt welding End Cap SDR11

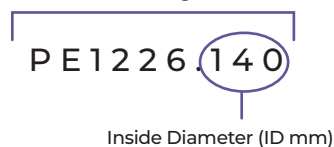
PE1230

| Code       | Size (mm) |
|------------|-----------|
| PE1230.90  | 90        |
| PE1230.110 | 110       |
| PE1230.125 | 125       |
| PE1230.140 | 140       |
| PE1230.160 | 160       |
| PE1230.180 | 180       |
| PE1230.200 | 200       |

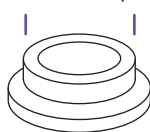


# MOULDED: WATERMAIN

Buttweld Stub Flange Order Code



Inside Diameter (ID mm)

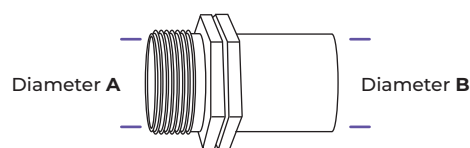
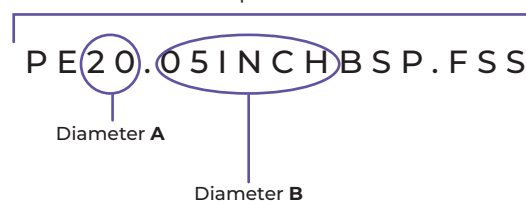


## PE Buttwelding Stub Flange SDR11

PE1226

| Code       | Size (mm) |
|------------|-----------|
| PE1226.140 | 140       |
| PE1226.160 | 160       |
| PE1226.180 | 180       |
| PE1226.200 | 200       |
| PE1226.225 | 225       |
| PE1226.250 | 250       |
| PE1226.280 | 280       |
| PE1226.315 | 315       |

BSP Adapter Order Code



## PE BSP Adapter

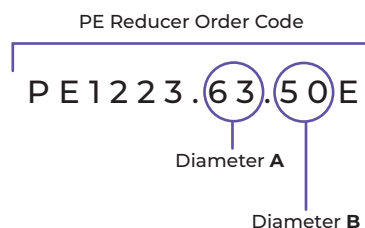
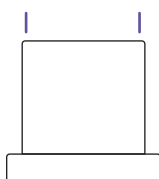
PE

| Code                 | Type   |
|----------------------|--|
| PE20.05INCHBSP.FSS   | ½ Inch S/S 316 Female Transition for PE 20mm BSP   |
| PE20.05INCHBSP.MSS   | ½ Inch S/S 316 Male Transition for PE 20mm BSP     |
| PE25.0.8INCHBSP.F    | ¾ Inch Brass Female Adapter for PE 25mm BSP        |
| PE25.0.8INCHBSP.FSS  | ¾ Inch S/S 316 Female Transition for PE 25mm BSP   |
| PE25.0.8INCHBSP.M    | ¾ Inch Brass Male Adapter for PE 25mm BSP          |
| PE25.0.8INCHBSP.MSS  | ¾ Inch S/S 316 Male Transition for PE 25mm BSP     |
| PE32.1INCHBSP.M      | 1 Inch Brass Male Adapter for PE 32mm BSP          |
| PE32.1INCHBSP.FSS    | 1 Inch S/S 316 Female Transition for PE 32mm BSP   |
| PE32.1INCHBSP.MSS    | 1 Inch S/S 316 Male Transition for PE 32mm BSP     |
| PE40.1.25INCHBSP.M   | 1 ¼ Inch Brass Male Adapter for PE 40mm BSP        |
| PE40.1.25INCHBSP.MSS | 1 ¼ Inch S/S 316 Male Transition for PE 40mm BSP   |
| PE40.1.25INCHBSP.FSS | 1 ¼ Inch BSP S/S 316 Female Transition for PE 40mm |
| PE50.1.5INCHBSP.M    | 1 ½ Inch Brass Male Adapter for PE 50mm BSP        |
| PE50.1.5INCHBSP.F    | 1.5 Inch Brass Female Adapter for PE 50mm BSP      |
| PE50.1.5INCHBSP.FSS  | 1 ½ Inch S/S 316 Female Transition for PE 50mm BSP |
| PE50.1.5INCHBSP.MSS  | 1 ½ Inch S/S 316 Male Transition for PE 50mm BSP   |
| PE63.2INCHBSP.F      | 2 Inch Brass Female Adapter for PE 63mm BSP        |
| PE63.2INCHBSP.M      | 2 Inch Brass Male Adapter for PE 63mm BSP          |
| PE63.2INCHBSP.MSS    | 2 Inch S/S 316 Male Transition for PE 63mm BSP     |
| PE63.2INCHBSP.FSS    | 2 Inch S/S 316 Female Transition for PE 63mm BSP   |

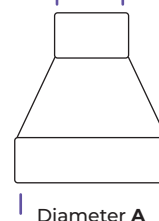
## MOULDED: WATERMAIN



Inside Diameter (ID mm)



Diameter B



### PE Stub EXT Leg

PE1226

| Code           | Size (mm) | Type  |
|----------------|-----------|-------|
| PE1226.50E.11  | 50        | SDR11 |
| PE1226.63E.11  | 63        | SDR11 |
| PE1226.63E.17  | 63        | SDR17 |
| PE1226.75E.11  | 75        | SDR11 |
| PE1226.75E.17  | 75        | SDR17 |
| PE1226.90E.11  | 90        | SDR11 |
| PE1226.90E.17  | 90        | SDR17 |
| PE1226.110E.11 | 110       | SDR11 |
| PE1226.110E.17 | 110       | SDR17 |
| PE1226.125E.11 | 125       | SDR11 |
| PE1226.125E.17 | 125       | SDR17 |
| PE1226.140E.11 | 140       | SDR11 |
| PE1226.140E.17 | 140       | SDR17 |
| PE1226.160E.11 | 160       | SDR11 |
| PE1226.160E.17 | 160       | SDR17 |
| PE1226.180E.11 | 180       | SDR11 |
| PE1226.180E.17 | 180       | SDR17 |
| PE1226.200E.11 | 200       | SDR11 |
| PE1226.200E.17 | 200       | SDR17 |
| PE1226.225E.11 | 225       | SDR11 |
| PE1226.225E.17 | 225       | SDR17 |
| PE1226.250E.11 | 250       | SDR11 |
| PE1226.250E.17 | 250       | SDR17 |
| PE1226.280E.11 | 280       | SDR11 |
| PE1226.280E.17 | 280       | SDR17 |
| PE1226.315E.11 | 315       | SDR11 |
| PE1226.315E.17 | 315       | SDR17 |



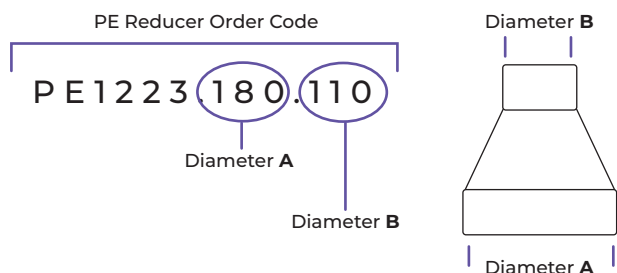
### PE Reducer SDR11

PE1223

| Code            | Size (mm) |
|-----------------|-----------|
| PE1223.63.50E   | 63 . 50   |
| PE1223.75.63E   | 75 . 63   |
| PE1223.90.63E   | 90 . 63   |
| PE1223.90.75E   | 90 . 75   |
| PE1223.110.63E  | 110 . 63  |
| PE1223.110.75E  | 110 . 75  |
| PE1223.110.90E  | 110 . 90  |
| PE1223.125.63E  | 125 . 63  |
| PE1223.125.75E  | 125 . 75  |
| PE1223.125.90E  | 125 . 90  |
| PE1223.125.110E | 125 . 110 |
| PE1223.140.63E  | 140 . 63  |
| PE1223.140.75E  | 140 . 75  |
| PE1223.140.90E  | 140 . 90  |
| PE1223.140.110E | 140 . 110 |
| PE1223.140.125E | 140 . 125 |
| PE1223.160.63E  | 160 . 63  |
| PE1223.160.75E  | 160 . 75  |
| PE1223.160.90E  | 160 . 90  |
| PE1223.160.110E | 160 . 110 |
| PE1223.160.125E | 160 . 125 |
| PE1223.160.140E | 160 . 140 |
| PE1223.180.63E  | 180 . 63  |
| PE1223.180.75E  | 180 . 75  |
| PE1223.180.90E  | 180 . 90  |

Continue to the next column.

## MOULDED/FABRICATED: WATERMAIN



## PE Reducer SDR11

PE1223

| Code            | Size (mm) |
|-----------------|-----------|
| PE1223.180.110  | 180 . 110 |
| PE1223.180.125  | 180 . 125 |
| PE1223.180.140  | 180 . 140 |
| PE1223.180.160  | 180 . 160 |
| PE1223.200.63   | 200 . 63  |
| PE1223.200.75   | 200 . 75  |
| PE1223.200.90   | 200 . 90  |
| PE1223.200.125  | 200 . 125 |
| PE1223.200.140  | 200 . 140 |
| PE1223.200.160  | 200 . 160 |
| PE1223.200.90   | 200 . 90  |
| PE1223.225.90   | 225 . 90  |
| PE1223.225.110  | 225 . 110 |
| PE1223.225.125  | 225 . 125 |
| PE1223.225.140  | 225 . 140 |
| PE1223.225.160  | 225 . 160 |
| PE1223.225.180  | 225 . 180 |
| PE1223.225.180E | 225 . 180 |
| PE1223.225.200  | 225 . 200 |
| PE1223.250.110  | 250 . 110 |
| PE1223.250.125  | 250 . 125 |
| PE1223.250.140  | 250 . 140 |
| PE1223.250.160  | 250 . 160 |
| PE1223.250.180  | 250 . 180 |
| PE1223.250.200  | 250 . 200 |
| PE1223.250.200E | 250 . 200 |

Continue to the next column.



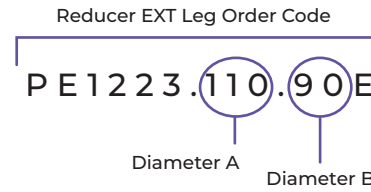
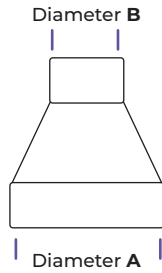
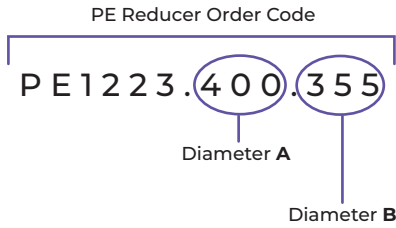
## PE Reducer SDR11

PE1223

| Code            | Size (mm) |
|-----------------|-----------|
| PE1223.250.225  | 250 . 225 |
| PE1223.250.225E | 250 . 225 |
| PE1223.250.90   | 250 . 90  |
| PE1223.280.110  | 280 . 110 |
| PE1223.280.125  | 280 . 125 |
| PE1223.280.140  | 280 . 140 |
| PE1223.280.160  | 280 . 160 |
| PE1223.280.180  | 280 . 180 |
| PE1223.280.200  | 280 . 200 |
| PE1223.280.225  | 280 . 225 |
| PE1223.280.250  | 280 . 250 |
| PE1223.315.160  | 315 . 160 |
| PE1223.315.180  | 315 . 180 |
| PE1223.315.200  | 315 . 200 |
| PE1223.315.225  | 315 . 225 |
| PE1223.315.250E | 315 . 250 |
| PE1223.315.280  | 315 . 280 |
| PE1223.355.180  | 335 . 180 |
| PE1223.355.90   | 355 . 90  |
| PE1223.355.200  | 355 . 200 |
| PE1223.355.225  | 355 . 225 |
| PE1223.355.250  | 355 . 250 |
| PE1223.355.280  | 355 . 280 |
| PE1223.355.315  | 355 . 315 |
| PE1223.400.225  | 400 . 225 |
| PE1223.400.250  | 400 . 250 |
| PE1223.400.280  | 400 . 280 |
| PE1223.400.315  | 400 . 315 |

Continue to the next column.

## MOULDED/FABRICATED: WATERMAIN



### PE Reducer SDR11

PE1223

| Code           | Size (mm) |
|----------------|-----------|
| PE1223.400.355 | 400 . 355 |
| PE1223.450.250 | 450 . 250 |
| PE1223.450.280 | 450 . 280 |
| PE1223.450.315 | 450 . 315 |
| PE1223.450.355 | 450 . 355 |
| PE1223.450.400 | 450 . 400 |
| PE1223.500.315 | 500 . 315 |
| PE1223.500.355 | 500 . 355 |
| PE1223.500.400 | 500 . 400 |
| PE1223.500.450 | 500 . 450 |
| PE1223.560.400 | 560 . 400 |
| PE1223.560.450 | 560 . 450 |
| PE1223.560.500 | 560 . 500 |
| PE1223.630.450 | 630 . 450 |
| PE1223.630.500 | 630 . 500 |
| PE1223.630.560 | 630 . 560 |



### PE Reducer EXT Leg SDR11

PE1223

| Code            | Size (mm) |
|-----------------|-----------|
| PE1223.110.90E  | 110 . 90  |
| PE1223.125.110E | 125 . 110 |
| PE1223.125.90E  | 125 . 90  |
| PE1223.160.110E | 160 . 110 |
| PE1223.160.125E | 160 . 125 |
| PE1223.160.90E  | 160 . 90  |
| PE1223.180.125E | 180 . 125 |
| PE1223.180.160E | 180 . 160 |
| PE1223.200.110E | 200 . 110 |
| PE1223.200.160E | 200 . 160 |
| PE1223.225.160E | 225 . 160 |
| PE1223.225.200E | 225 . 200 |



### PE Hydrant Tee SDR11

PE1204

| Code              | Size (mm) |
|-------------------|-----------|
| PE1204.125HYD     | 125       |
| PE1204.160HYD     | 160       |
| PE1204.180.100HYD | 180 . 125 |
| PE1204.180HYD     | 180       |
| PE1204.225HYD     | 225       |
| PE1204.250HYD     | 250       |
| PE1204.355HYD     | 355       |



### PE Butt welding End Cap SDR11

PE1230

| Code       | Size (mm) |
|------------|-----------|
| PE1230.225 | 225       |
| PE1230.250 | 250       |
| PE1230.280 | 280       |
| PE1230.315 | 315       |
| PE1230.355 | 355       |
| PE1230.400 | 400       |
| PE1230.450 | 450       |
| PE1230.500 | 500       |
| PE1230.560 | 560       |
| PE1230.630 | 630       |

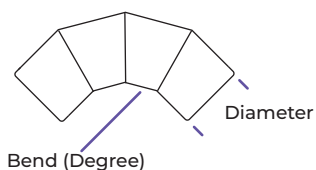
## FABRICATED: WATERMAIN

Segmented Bend Order Code

PE1201.90.45

Diameter  
(mm)

Bend (Degree)



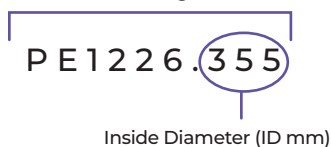
## PE Segmented Bend SDR11

PE1201

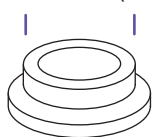
| Code          | Size (mm) | Type           | Bend |
|---------------|-----------|----------------|------|
| PE1201.90.45  | 90        | 1 Segment Bend | 45°  |
| PE1201.90.90  | 90        | 2 Segment Bend | 90°  |
| PE1201.110.45 | 110       | 1 Segment Bend | 45°  |
| PE1201.110.90 | 110       | 2 Segment Bend | 90°  |
| PE1201.125.11 | 125       | Elbow          | 11°  |
| PE1201.125.22 | 125       | Elbow          | 22°  |
| PE1201.125.45 | 125       | 1 Segment Bend | 45°  |
| PE1201.125.90 | 125       | 2 Segment Bend | 90°  |
| PE1201.160.45 | 160       | 1 Segment Bend | 45°  |
| PE1201.160.90 | 160       | 2 Segment Bend | 90°  |
| PE1201.180.11 | 180       | Elbow          | 11°  |
| PE1201.180.22 | 180       | Elbow          | 22°  |
| PE1201.180.45 | 180       | 1 Segment Bend | 45°  |
| PE1201.180.90 | 180       | 2 Segment Bend | 90°  |
| PE1201.200.45 | 200       | 1 Segment Bend | 45°  |
| PE1201.200.90 | 200       | 2 Segment Bend | 90°  |
| PE1201.225.45 | 225       | 1 Segment Bend | 45°  |
| PE1201.225.90 | 225       | 2 Segment Bend | 90°  |
| PE1201.250.11 | 250       | Elbow          | 11°  |
| PE1201.250.22 | 250       | Elbow          | 22°  |
| PE1201.250.45 | 250       | 1 Segment Bend | 45°  |
| PE1201.250.90 | 250       | 2 Segment Bend | 90°  |
| PE1201.280.45 | 280       | 1 Segment Bend | 45°  |
| PE1201.280.90 | 280       | 2 Segment Bend | 90°  |
| PE1201.315.45 | 315       | 1 Segment Bend | 45°  |
| PE1201.315.90 | 315       | 2 Segment Bend | 90°  |
| PE1201.355.22 | 355       | Elbow          | 22°  |
| PE1201.355.45 | 355       | 1 Segment Bend | 45°  |
| PE1201.355.90 | 355       | 2 Segment Bend | 90°  |
| PE1201.400.45 | 400       | 1 Segment Bend | 45°  |
| PE1201.400.90 | 400       | 2 Segment Bend | 90°  |
| PE1201.450.45 | 450       | 1 Segment Bend | 45°  |
| PE1201.450.90 | 450       | 2 Segment Bend | 90°  |
| PE1201.500.45 | 500       | 1 Segment Bend | 45°  |
| PE1201.500.90 | 500       | 2 Segment Bend | 90°  |

## FABRICATED: WATERMAIN

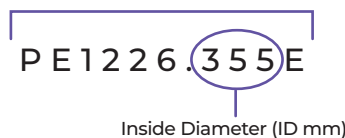
Buttweld Stub Flange Order Code



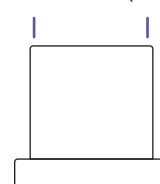
Inside Diameter (ID mm)



Stub EXT Leg Flange Order Code



Inside Diameter (ID mm)



### PE Buttweld Stub Flange

PE1226

| Code           | Size (mm) | Type  |
|----------------|-----------|-------|
| PE1226.355     | 355       | SDR11 |
| PE1226.375     | 375       | SDR11 |
| PE1226.400     | 400       | SDR11 |
| PE1226.450     | 450       | SDR11 |
| PE1226.450.17  | 450       | SDR17 |
| PE1226.500     | 500       | SDR11 |
| PE1226.500.17  | 500       | SDR17 |
| PE1226.560     | 560       | SDR11 |
| PE1226.560.17  | 560       | SDR17 |
| PE1226.630     | 630       | SDR11 |
| PE1226.630.17  | 630       | SDR17 |
| PE1226.710.11  | 710       | SDR11 |
| PE1226.710.17  | 710       | SDR17 |
| PE1226.800.11  | 800       | SDR11 |
| PE1226.800.17  | 800       | SDR17 |
| PE1226.900.11  | 900       | SDR11 |
| PE1226.900.17  | 900       | SDR17 |
| PE1226.1000.11 | 1000      | SDR11 |
| PE1226.1000.17 | 1000      | SDR17 |
| PE1226.1200.11 | 1200      | SDR11 |
| PE1226.1200.17 | 1200      | SDR17 |



### PE Stub EXT Leg Flange SDR11

PE1226

| Code        | Size (mm) |
|-------------|-----------|
| PE1226.355E | 355       |
| PE1226.375E | 375       |
| PE1226.400E | 400       |
| PE1226.450E | 450       |
| PE1226.500E | 500       |
| PE1226.560E | 560       |
| PE1226.630E | 630       |



### PE Slim Flange

PE1226

| Code               | Size (mm) | For                |
|--------------------|-----------|--------------------|
| PE1226.250.200     | 200       | 200 PN12           |
| PE1226.250.200PN16 | 250       | 200 PN16           |
| PE1226.315.250     | 315       | 250 PN12           |
| PE1226.315.250FFF  | 315       | 250 PN16 Full Face |
| PE1226.355.300     | 355       | 300 PN12           |
| PE1226.400.350     | 400       | 350 PN12           |
| PE1226.400.375     | 400       | 375 PN12           |
| PE1226.450.375     | 450       | 375 PN12           |
| PE1226.450.400     | 450       | 400 PN12           |
| PE1226.500.450     | 500       | 450 PN12           |
| PE1226.560.500     | 560       | 500 PN12           |



FORMING

Swept Drain Bend Order Code

PE603.63.45

Inside Diameter (ID mm)

Bend (Degree)



Bend (Degree)

Inside Diameter (ID mm)



PE Swept Drain Bend SDR17

PE603

| Code         | Size (mm) | Bend |
|--------------|-----------|------|
| PE603.63.45  | 63        | 45°  |
| PE603.63.90  | 63        | 90°  |
| PE603.90.45  | 90        | 45°  |
| PE603.90.90  | 90        | 90°  |
| PE603.110.45 | 110       | 45°  |
| PE603.110.90 | 110       | 90°  |
| PE603.125.45 | 125       | 45°  |
| PE603.125.90 | 125       | 90°  |
| PE603.160.45 | 160       | 45°  |
| PE603.160.90 | 160       | 90°  |
| PE603.180.45 | 180       | 45°  |
| PE603.180.90 | 180       | 90°  |
| PE603.200.45 | 200       | 45°  |
| PE603.200.90 | 200       | 90°  |
| PE603.225.45 | 225       | 45°  |
| PE603.225.90 | 225       | 90°  |
| PE603.250.45 | 250       | 45°  |
| PE603.250.90 | 250       | 90°  |
| PE603.280.45 | 280       | 45°  |
| PE603.280.90 | 280       | 90°  |
| PE603.315.45 | 315       | 45°  |
| PE603.315.90 | 315       | 90°  |
| PE603.355.45 | 355       | 45°  |
| PE603.355.90 | 355       | 90°  |
| PE603.400.45 | 400       | 45°  |
| PE603.400.90 | 400       | 90°  |
| PE603.450.45 | 450       | 45°  |
| PE603.450.90 | 450       | 90°  |
| PE603.500.45 | 500       | 45°  |
| PE603.500.90 | 500       | 90°  |



PE Swept Bend SDR11

PE1203

| Code          | Size (mm) | Bend |
|---------------|-----------|------|
| PE1203.50.45  | 50        | 45°  |
| PE1203.50.90  | 50        | 90°  |
| PE1203.63.45  | 63        | 45°  |
| PE1203.63.90  | 63        | 90°  |
| PE1203.75.45  | 75        | 45°  |
| PE1203.75.90  | 75        | 90°  |
| PE1203.90.45  | 90        | 45°  |
| PE1203.90.90  | 90        | 90°  |
| PE1203.110.45 | 110       | 45°  |
| PE1203.110.90 | 110       | 90°  |
| PE1203.125.45 | 125       | 45°  |
| PE1203.125.90 | 125       | 90°  |
| PE1203.140.45 | 140       | 45°  |
| PE1203.140.90 | 140       | 90°  |
| PE1203.160.45 | 160       | 45°  |
| PE1203.160.90 | 160       | 90°  |
| PE1203.180.45 | 180       | 45°  |
| PE1203.180.90 | 180       | 90°  |
| PE1203.200.45 | 200       | 45°  |
| PE1203.200.90 | 200       | 90°  |
| PE1203.225.45 | 225       | 45°  |
| PE1203.225.90 | 225       | 90°  |
| PE1203.250.45 | 250       | 45°  |
| PE1203.250.90 | 250       | 90°  |
| PE1203.280.45 | 280       | 45°  |
| PE1203.280.90 | 280       | 90°  |
| PE1203.315.45 | 315       | 45°  |
| PE1203.315.90 | 315       | 90°  |
| PE1203.355.45 | 355       | 45°  |
| PE1203.355.90 | 355       | 90°  |
| PE1203.400.45 | 400       | 45°  |
| PE1203.400.90 | 400       | 90°  |
| PE1203.450.45 | 450       | 45°  |
| PE1203.450.90 | 450       | 90°  |
| PE1203.500.45 | 500       | 45°  |
| PE1203.500.90 | 500       | 90°  |

# MISCELLANEOUS PRODUCTS

# MISCELLANEOUS PRODUCTS RANGE

## PRODUCTS

**84-86** Valves | Adaptors  
Connectors | Rainheads  
Rainwater Angles  
Rings | Locks | Pipe  
Drilling Patterns

## TANKS

**87** Retention and  
Detention Tanks

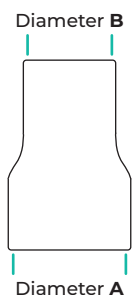
## PIPES

**88-91** SN8 EZYFLOW  
SN16 EZYPIPE  
FITTINGS



## PRODUCTS

### Code breakdown



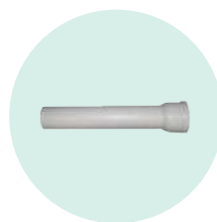
Depending on the type of product, the following illustrations explain what the code numbers mean.



### Downpipe Adapter



| Code                 | Size (mm) |
|----------------------|-----------|
| <b>ADAPTER100/65</b> | 100 . 65  |
| <b>ADAPTER100/80</b> | 100 . 80  |



### Pan Connector for DWV



| Code       | Size (mm) |
|------------|-----------|
| <b>PAN</b> | 100       |



### Splitter Valves



| Code                | Size (mm)   |
|---------------------|-------------|
| <b>SPLITTER2WAY</b> | 100mm 2 Way |
| <b>SPLITTER3WAY</b> | 100mm 3 Way |



### Rainheads



| Code             |
|------------------|
| <b>RAINHEADS</b> |



### Rainwater Angles



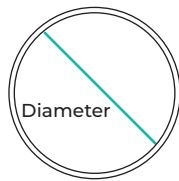
| Code               |
|--------------------|
| <b>RAINWATER 1</b> |
| <b>RAINWATER 2</b> |
| <b>RAINWATER 3</b> |

PRODUCTS

Rubber Z Ring Order Code

860.50

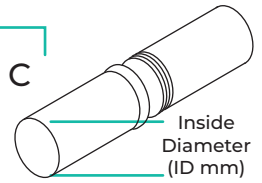
Diameter (mm)



Downpipe Adapter Order Code

SNAPLOCK225SOC

Inside Diameter (ID mm)



Rubber Z Ring

860

| Code    | Size (mm) |
|---------|-----------|
| 860.50  | 50        |
| 860.65  | 65        |
| 860.80  | 80        |
| 860.100 | 100       |
| 860.110 | 110       |
| 860.125 | 125       |
| 860.150 | 150       |
| 860.155 | 155       |
| 860.175 | 175       |
| 860.200 | 200       |
| 860.225 | 225       |
| 860.300 | 300       |
| 860.375 | 375       |



Snap Lock Pipe Socket SN16

SNAP LOCK

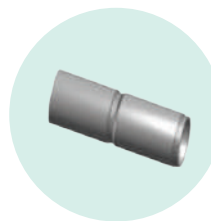
| Code             | Size (mm) | Length (mm) |
|------------------|-----------|-------------|
| SNAPLOCK225SOC   | 225       | 1150        |
| SNAPLOCK225SOCSP | 225       | 1150        |
| SNAPLOCK225SP    | 225       | 1150        |



Rubber Anger Lock Ring

F576

| Code       | Size (mm) |
|------------|-----------|
| F576.DN110 | 110       |
| F576.DN160 | 160       |
| F576.DN200 | 200       |
| F576.DN250 | 250       |
| F576.DN315 | 315       |
| F576.DN400 | 400       |



Jacking Pipe for Reline or Slip Line Pipe

JACKING PIPE

Code

JACKING PIPE



Manifolds

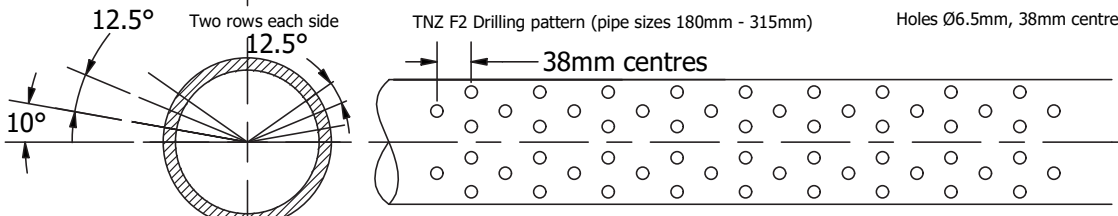
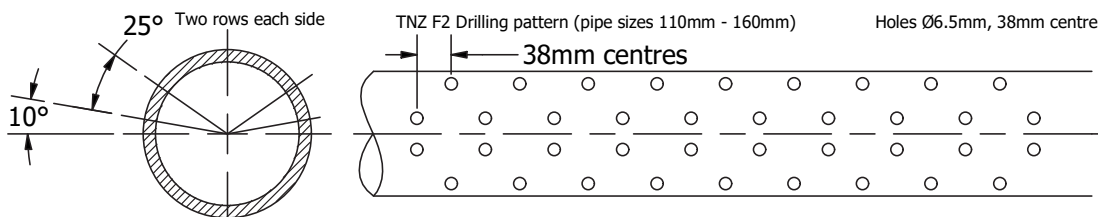
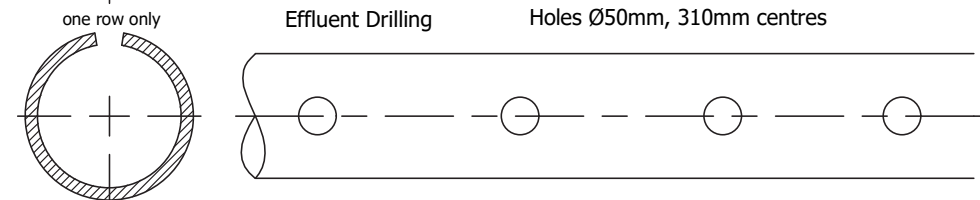
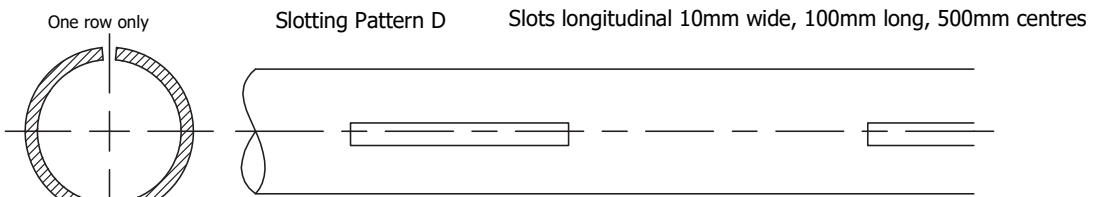
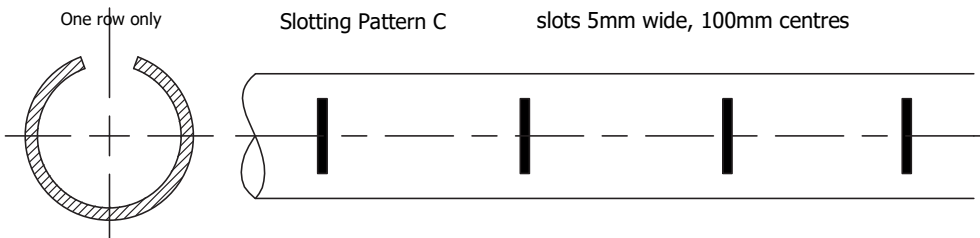
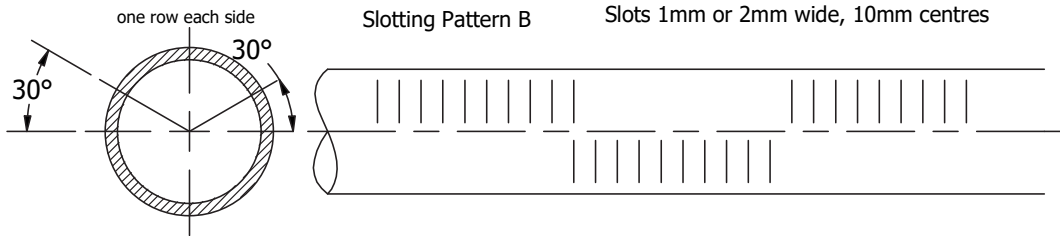
MANIFOLDS

Code

PE MANIFOLDS

PVC MANIFOLDS

Drilling and Slotting patterns



Tolerances

Slotting

- minimum O/D for pattern B is 42mm (32mm DWV)
- minimum O/D for pattern B is 250mm

Drilling

- minimum O/D for drilling is 100mm (can do 42mm (32mm DWV) with special setup)
- minimum O/D for drilling is 355mm



PRODUCTS

Whether you require storage solutions or stormwater retention systems, Solo Plastics offers designs tailored to your needs.



ISO TYPE 5  
AS/NZS 5065:2005



Available diameters from 600mm to 3200mm



1-22m long



600-3200mm diameter



Easily connected on-site



Fully recyclable



Lightweight



Totally flexible design: sumps risers, connectors



100-year design life



- Suitable for under lawn installations and for under driveway installations.
- For under driveway tanks we calculate the required wall thickness using EasyPipe software.
- Made to the required volume.
- Outlet flow designed to suit the application and local body requirements e.g. A silt trap as required by the Auckland City Council.
- Calculations are in accordance with AS/NZS 2566.1:1998 – Buried Flexible pipelines: Structural Design Design and installation parameters used are in accordance with AS/NZS 2566.2:2002 – Buried flexible pipelines - Installation



- Available as a Detention, Retention or combo tank system.
- Fully UV stabilised.
- Smooth internally for easy cleaning, ribbed externally for extra strength.
- 600mm access entry with push on inspection cap.
- Inlets, outlets, access, joins and pump locations can be configured in any way that is necessary.
- Anti-Buoyancy design and solution can be provided.

Free delivery for tanks up to 6 meters around Auckland. Delivery for longer tanks is based on an hourly charge. For all information please contact Solo: [solo.sales@solo.co.nz](mailto:solo.sales@solo.co.nz)

## PIPES

### EZYFLOW™ and EZYPIPE™

New Zealand made corrugated PE pipe system utilising the latest manufacturing technology,

- EZYFLOW™ SN8 is made to a SN8 stiffness rating under the AS/NZS 5065:2005 standard, which makes it ideal for road culverts and gravity pipelines.
- EZYFLOW™ SN8 Culvert Pipes are designed and manufactured to be lightweight, with a twin wall construction that minimizes the need for heavy lifting equipment. The lightweight nature of EZYFLOW™ SN8 allows it to be handled by two people while maintaining its high durability. This product offers significant savings in time, machinery, labour and therefore overall cost.



- EZYPIPE™ is a New Zealand made corrugated PE pipe system that is ideal for civil applications. Utilising the latest manufacturing technology. EZYPIPE™ is made to a SN16 stiffness rating under the AS/NZS 5065:2005 standard, which makes it ideal for road culverts and gravity pipelines in civil applications.
- Supplied in 6 metre lengths, EZYPIPE™ is very light, yet incredibly strong, and able to withstand high loads and severe impacts.



EZYFLOW™ and EZYPIPE™ pipes are designed and manufactured to produce **zero toxic** leaching.



#### RUBBER RINGS

NZ-Made 100yr life rings are available for joining pipes.

#### FLUMING

Single-wall half-pipe variants are available.

#### HALF LENGTHS

Are available on request.

DN is the **Nominal Diameter** which for these pipes corresponds exactly to the ID - Internal Diameter – avoiding the possibility of confusion.

SN Rating is the Nominal Stiffness expressed as vertical load in N/m/m. This can be provided to EasyPipe software and can be used to calculate the required SN Rating for any given section. SN Ratings are equal to the concrete class i.e. Class 2 is equal to SN4 and Class 4 is equal to SN16.

The **nominal stiffness ratings** for flexible pipes are typically SN4, SN6, SN8, SN12, and SN16, where the number represents the stiffness in kN/m<sup>2</sup>. For example, EZYFLOW™ SN8 pipe has a nominal stiffness of 8000 N/m<sup>2</sup>, and EZYPIPE™ SN16 has a nominal stiffness of 16000 N/m<sup>2</sup>.

SN8 EZYFLOW | PIPE



ZC EZYFLOW  
SN8 Pipe



| Code            | Type          | Size (M) | Weight(Kg) |
|-----------------|---------------|----------|------------|
| ZC.100.SN8.6.0  | ZC ID100 SN8  | 6m       | 5kg        |
| ZC.150.SN8.6.0  | ZC ID150 SN8  | 6m       | 8kg        |
| ZC.225.SN8.6.0  | ZC ID225 SN8  | 6m       | 17kg       |
| ZC.300.SN8.6.0  | ZC ID300 SN8  | 6m       | 28kg       |
| ZC.375.SN8.6.0  | ZC ID375 SN8  | 6m       | 49.30kg    |
| ZC.450.SN8.6.0  | ZC ID450 SN8  | 6m       | 75kg       |
| ZC.525.SN8.6.0  | ZC ID525 SN8  | 6m       | 101.10kg   |
| ZC.600.SN8.6.0  | ZC ID600 SN8  | 6m       | 122.20kg   |
| ZC.800.SN8.6.0  | ZC ID800 SN8  | 6m       | 212.00kg   |
| ZC.1000.SN8.6.0 | ZC ID1000 SN8 | 6m       | 344.10kg   |



ISO TYPE 5  
AS/NZS 5065:2005



Fully  
recyclable



Lightweight



100-year  
design life

Key Benefits

- Best resistance to abrasion.
- Superb hydraulic performance.
- Extremely strong.
- Less transport costs and install costs.
- Good chemical stability.
- Lighter than concrete or PVC.
- Completely recyclable.
- Superb biological resistance.
- Easy to cut to length with hand tools.
- Less transport costs and install costs.
- Quick to install – laying in 6m lengths.
- Accompanied by a full range of fittings.
- Can be connected to any existing or potential pipe or manhole.
- Can be used in any soil conditions with a 100 year life.
- Best seismic resistance.

SN16 EZYPIPE | PIPE



EZYPIPE SN16 Pipe



| Code             | Type           | Size (M) |
|------------------|----------------|----------|
| ZC.225.SN16.6.0  | ZC ID225 SN16  | 6m       |
| ZC.300.SN16.6.0  | ZC ID300 SN16  | 6m       |
| ZC.375.SN16.6.0  | ZC ID375 SN16  | 6m       |
| ZC.450.SN16.6.0  | ZC ID450 SN16  | 6m       |
| ZC.525.SN16.6.0  | ZC ID525 SN16  | 6m       |
| ZC.600.SN16.6.0  | ZC ID600 SN16  | 6m       |
| ZC.800.SN16.6.0  | ZC ID800 SN16  | 6m       |
| ZC.1000.SN16.6.0 | ZC ID1000 SN16 | 6m       |



ISO TYPE 5  
AS/NZS 5065:2005



Fully recyclable



Lightweight

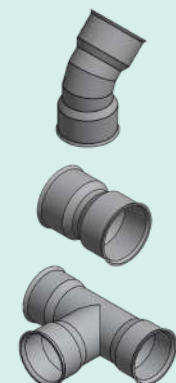


100-year design life

Key Benefits

- Best resistance to abrasion.
- Superb hydraulic performance.
- Good chemical stability.
- Superb biological resistance.
- Can be used in any soil conditions with a 100 year asset life.
- Extremely strong and best seismic resistance.
- Less transport costs and install costs.
- Quick to install – laying in 6m lengths.
- Safe when installing due to its lightweight and flexible nature.
- Bends allow for the most direct routes and reduce the need for manholes.
- Can be connected to any existing or potential pipe or manhole.
- Accompanied by a full range of fittings.





### FITTINGS

- For fittings 100-200mm use Fernco products.
- For fittings 225-450 Refer to the next column for corresponding codes. Lead time is 2 weeks.
- For fittings 525+ contact us for a fabrication quote.

| DN  | MANHOLE CONNECTOR | T JUNCTION     | Y JUNCTION     | COUPLER      |
|-----|-------------------|----------------|----------------|--------------|
| 225 | ZCMC.225          | ZC1504H.225.90 | ZC1504H.225.45 | ZC1511.225HD |
| 300 | ZCMC.300          | ZC1504H.300.90 | ZC1504H.300.45 | ZC1511.300HD |
| 375 | ZCMC.375          | ZC1504H.375.90 | ZC1504H.375.45 | ZC1511.375HD |
| 450 | ZCMC.450          | ZC1504H.450.90 | ZC1504H.450.45 | ZC1511.450HD |

| DN  | REDUCER         | 90 DEG BEND    | 45 DEG BEND    | 11 DEG BEND    |
|-----|-----------------|----------------|----------------|----------------|
| 225 | ZC1523.225.150C | ZC1501H.225.90 | ZC1501H.225.45 | ZC1501H.225.11 |
| 300 | ZC1523.300.225C | ZC1501H.300.90 | ZC1501H.300.45 | ZC1501H.300.11 |
| 375 | ZC1523.375.300C | ZC1501H.375.90 | ZC1501H.375.45 | ZC1501H.375.11 |
| 450 | ZC1523.450.375C | ZC1501H.450.90 | ZC1501H.450.45 | ZC1501H.450.11 |



## PIPES

OUR HDPE CULVERT PIPES CAN BE ADAPTED IN MANY WAYS TO FIT TO EXISTING CONCRETE, PE OR PVC CULVERTS AND EVEN HAVE FLOOD GATES ATTACHED IF REQUIRED.



**100 year asset life.**  
100 year life expectancy.



**Smooth Bore.**  
Smooth interior/bore to increase flow rates.



**Connect-ability.**  
Socket (female) / Spigot (male) push fit connections to quickly connect to other pipes.



**Adaptability.**  
Pipe can be drilled/perforated for drainage and it does not affect its strength.



**Save cost and wastage.**  
Pipes can be manufactured to length to save cost and wastage.

## USED FOR:

- Farm culverts
- Access way culverts
- Civil temporary works
- Forestry culverts
- Piping water races or creeks
- Stop bank culverts
- Flumes for surface water management
- Helping with upstream fish passage - through the installation of baffles



# Solo Plastics

## Auckland

Phone 09 828 9594  
[solo.sales@solo.co.nz](mailto:solo.sales@solo.co.nz)

25-33 Honan Place  
Avondale  
Auckland  
New Zealand

## Christchurch

Phone 03 353 9291  
[solo.saleschch@solo.co.nz](mailto:solo.saleschch@solo.co.nz)

72 Hayton Road  
Wigram  
Christchurch  
New Zealand



Fabricating for a better tomorrow  
*He waka eke noa*



[solo.co.nz](http://solo.co.nz)